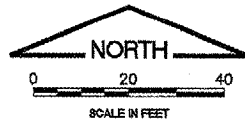
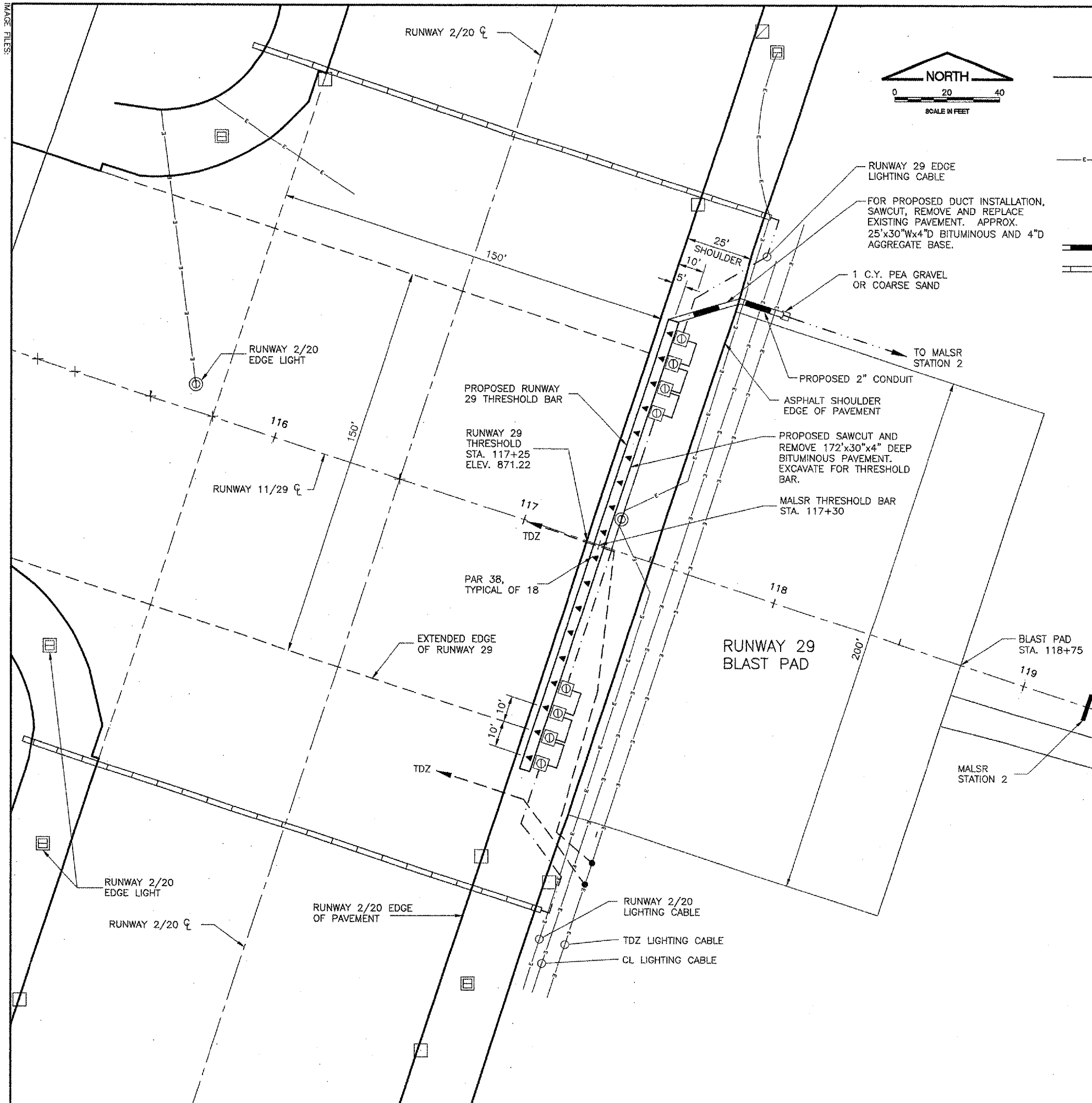
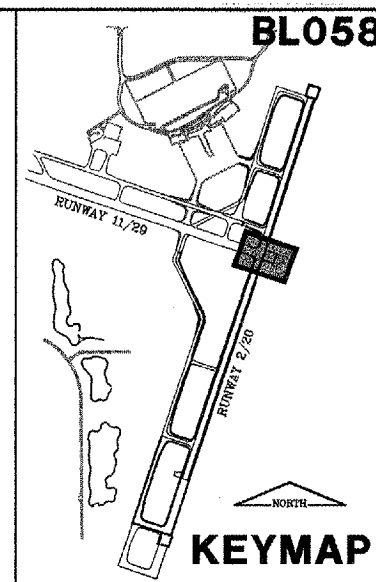


IMAGE FILES



**LEGEND**

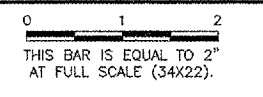
	EXISTING RUNWAY EDGE LIGHT
	EXISTING RUNWAY THRESHOLD LIGHT
	ELECTRICAL CABLE BURIED
	PROPOSED MALSr THRESHOLD LIGHT
	EXISTING RUNWAY EDGE LIGHT, SEMIFLUSH
	PROPOSED CONDUIT- 2" G.R.S.
	EXISTING CONDUIT



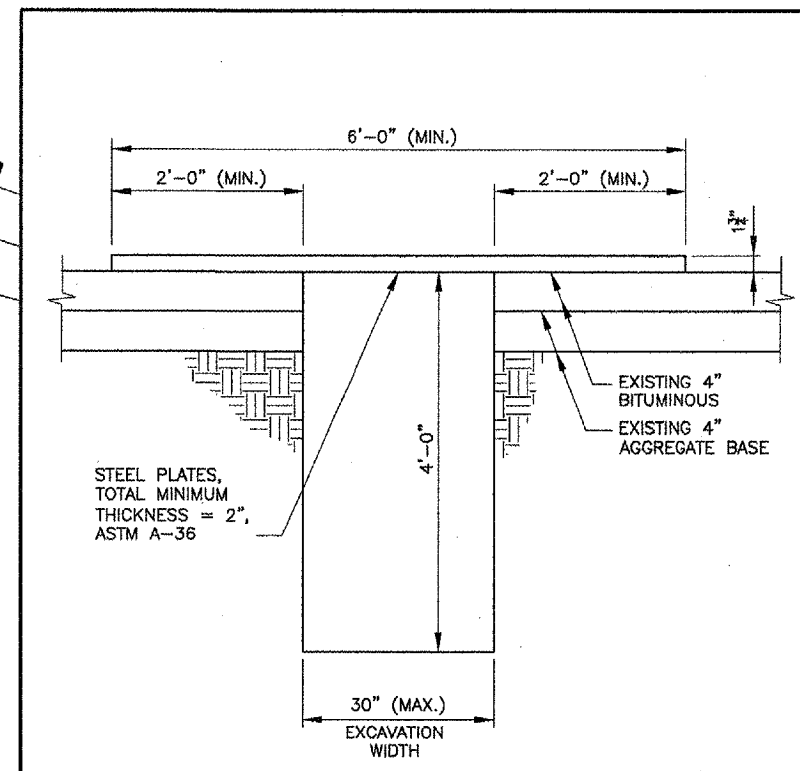
**BL058**  
 K:\Bloomington\p\0308503\draw\sheet\...  
 FILE: THRESHOLDBARSITEPLAN.dwg  
 LAYOUT: Layout1  
 UPDATE BY: adraughan  
 SURVEY BOOK #  
 DATE: Tue 1/18/05 3:11pm  
 XREF DWG: DPABase.dwg  
 PROPGE0.dwg  
 TB.DWG  
 CLNTINF.DWG  
 KEY.dwg

**REVISIONS**

NUMBER	BY	DATE



- NOTES**
- 1.) ALL CONSTRUCTION ON THE MALSr THRESHOLD BAR SHALL OCCUR DURING PHASE 3. SEE CONSTRUCTION ACTIVITY PLANS FOR FURTHER INFORMATION.
  - 2.) THRESHOLD BAR TRENCH AND ALL OPEN TRENCHES WITHIN PHASE 3 SHALL BE COVERED AT ALL TIMES OF AIRPORT OPERATION AND MAY BE UNCOVERED ONLY DURING NIGHT RUNWAY CLOSURES. SEE TRENCH PLATING DETAIL.



**TRENCH PLATING DETAIL**  
N.T.S.

**BLOOMINGTON-NORMAL AIRPORT AUTHORITY**  
**CENTRAL ILLINOIS REGIONAL AIRPORT**  
**BLOOMINGTON, ILLINOIS**  
**INSTALL RUNWAY 29 MALSr**  
**THRESHOLD BAR SITE PLAN**

**CMT**  
 CRAWFORD, MURPHY & TILLY, INC.  
 CONSULTING ENGINEERS  
 © Copyright CMT, Inc.

DESIGN BY:	TM
DRAWN BY:	CMT
CHECKED BY:	RW
APPROVED BY:	RW
DATE:	12/25/2004
JOB No:	03085-03-00