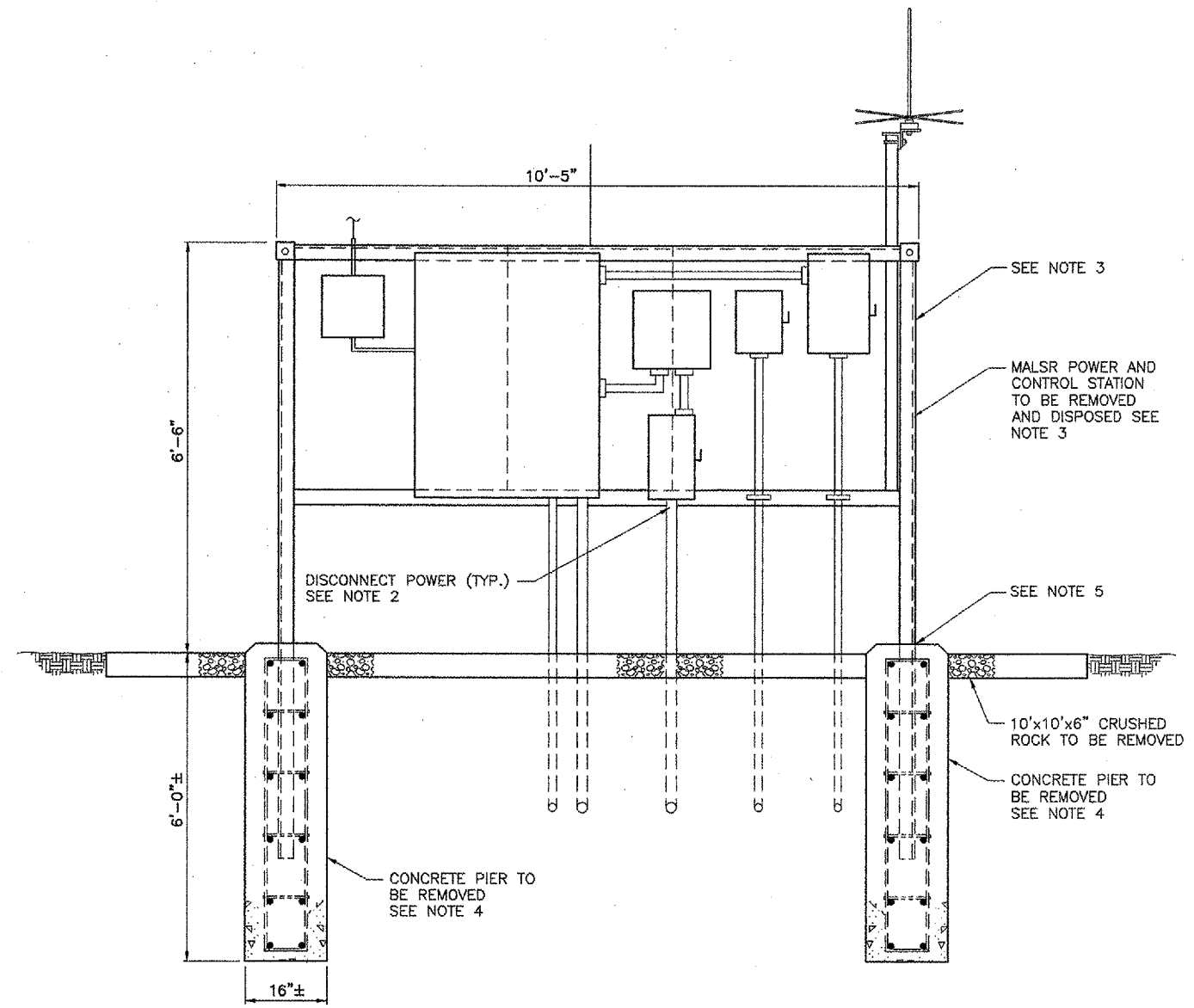
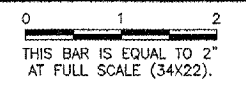
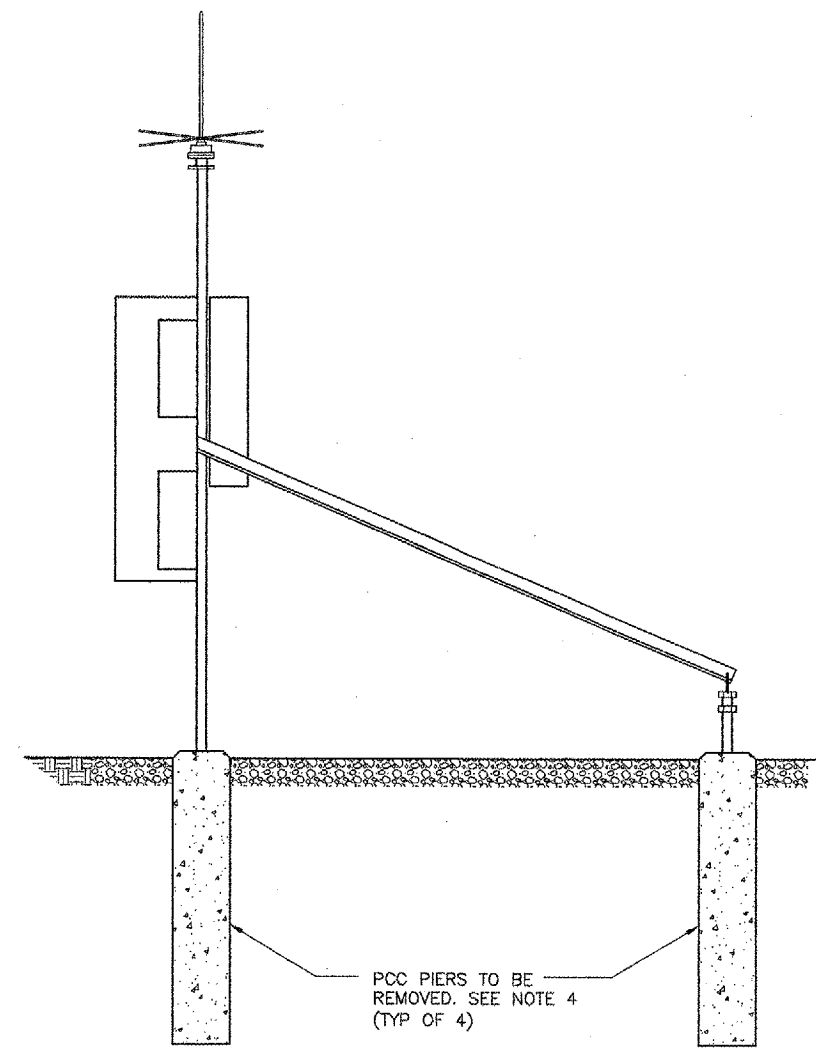


IMAGE FILES:

REVISIONS		
NUMBER	BY	DATE



MALSr POWER AND CONTROL STATION REMOVAL
 N.T.S.
 (INCLUDED IN MALSR REMOVAL)



MALSr POWER AND CONTROL STATION REMOVAL - SIDE VIEW
 N.T.S.
 (INCLUDED IN MALSR REMOVAL)

NOTES

1. MALSR REMOVAL INCLUDES REMOVAL OF ELECTRICAL POWER, CONTROL AND DISTRIBUTION PANELS, PLYWOOD, CONDUITS AND FOUNDATIONS.
2. PRIOR TO REMOVAL, DISCONNECT ALL POWER SUPPLY WIRES.
3. REMOVE PLYWOOD PANEL AND ALL ELECTRICAL EQUIPMENT, AND DISPOSE PER SPECIFICATIONS, **EXCEPT REMOVE AND REINSTALL ANTENNA, RADIO INTERFACE CONTROL, DECODER AND RECEIVER.**
4. REMOVE CONCRETE PIER AND PCC PADS AND BACKFILL WITH COMPACTED SOIL.
5. CUT POST PRIOR TO REMOVAL.

BLOOMINGTON-NORMAL AIRPORT AUTHORITY
CENTRAL ILLINOIS REGIONAL AIRPORT
BLOOMINGTON, ILLINOIS
INSTALL RUNWAY 29 MALSR
MALSr POWER AND CONTROL REMOVAL DETAIL

CMT
CRAWFORD, MURPHY & TILLY, INC.
CONSULTING ENGINEERS
© Copyright CMT, Inc.

DESIGN BY:	TM
DRAWN BY:	CMT
CHECKED BY:	RLV
APPROVED BY:	RLV
DATE:	12/25/2004
JOB No:	03085-03-00