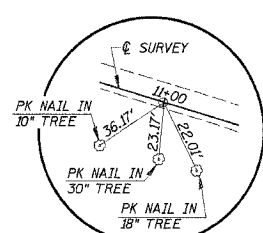
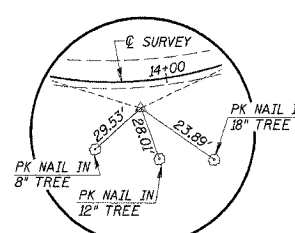


ROUTE	SECTION	COUNTY	TOTAL SHEETS	SHEET NO.
T.R. 408	98-02117 -00-BR	SHELBY	14	3
STA.	TO STA.			
ROAD DISTRICT	ILLINOIS	BIG SPRING		



P.O.T. STA. 10+99.86
IRON PIN (FLUSH)



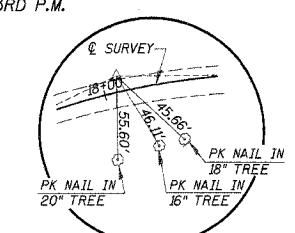
P.I. STA. 13+88.09
IRON PIN (FLUSH)

CURVE DATA #1
 P.I. STA. 13+88.09
 $\Delta = 41^\circ 53' 35''$
 $D = 27^\circ 24' 56''$
 $T = 80.00'$
 $R = 208.99'$
 $L = 152.81'$
 $E = 14.79'$
 $S.E. = 0.04''$
 *TRANSITION FROM EXISTING S.E. @ STA. 13+00 TO STA. 13+80 AND FROM STA. 13+80 TO .02'/FT. @ STA. 14+59.70

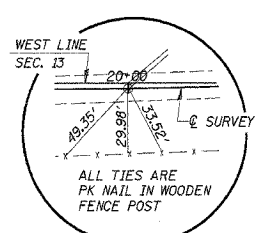
N.E. 1/4, N.E. 1/4, SEC. 23, T. 10 N., R. 6 E., 3RD P.M.
MICHAEL D. & TAMMY J. COLE
 PARCEL #6

SW CORNER, SEC. 13, T. 10 N., R. 6 E., 3RD P.M.
 STA. 16+67.91
 LT. 71.35'

S.E. 1/4, S.E. 1/4, SEC. 14, T. 10 N., R. 6 E., 3RD P.M.
STEVE & LISA WILLENBORG
 PARCEL #5



P.I. STA. 18+09.83
IRON PIN (FLUSH)



P.O.T. STA. 19+99.86
IRON PIN (FLUSH)

EXISTING STRUCTURE NO. 087-3287
 SINGLE SPAN STEEL I-BEAM BRIDGE
 W/ CONCRETE DECK ON CLOSED TIMBER ABUT. & TIMBER WINGS
 35.70' BK.-BK. ABUTS., 20.10' O.-O. DECK
 NO SKEW, CONDUIT ON EAST SIDE
 REMOVAL OF EXISTING STRUCTURES = 1 EACH

BURIED CABLE
 ALLTEL INC.
 NEOGA, IL.

CHANNEL EXCAVATION
 THE CHANNEL SHALL BE EXCAVATED AS SHOWN WITHIN THE LIMITS OF THE PROPOSED STRUCTURE, THEN TAPER TO THE EXISTING CHANNEL AT THE R.O.W. LINES.
 CHANNEL EXCAVATION = 336 CU. YD.

