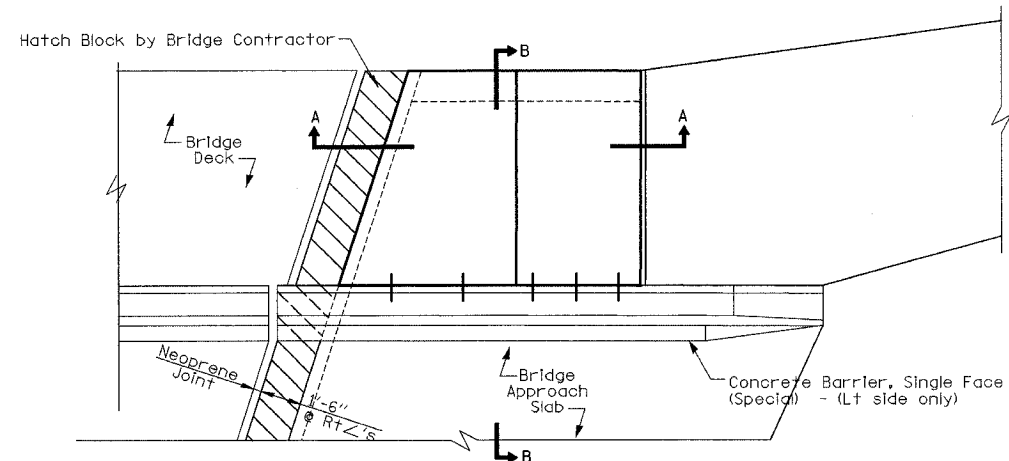
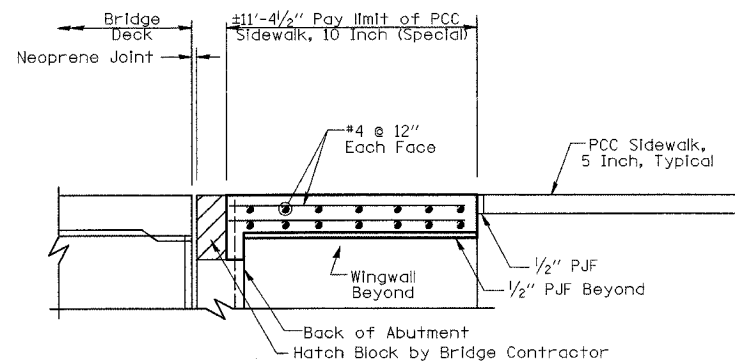


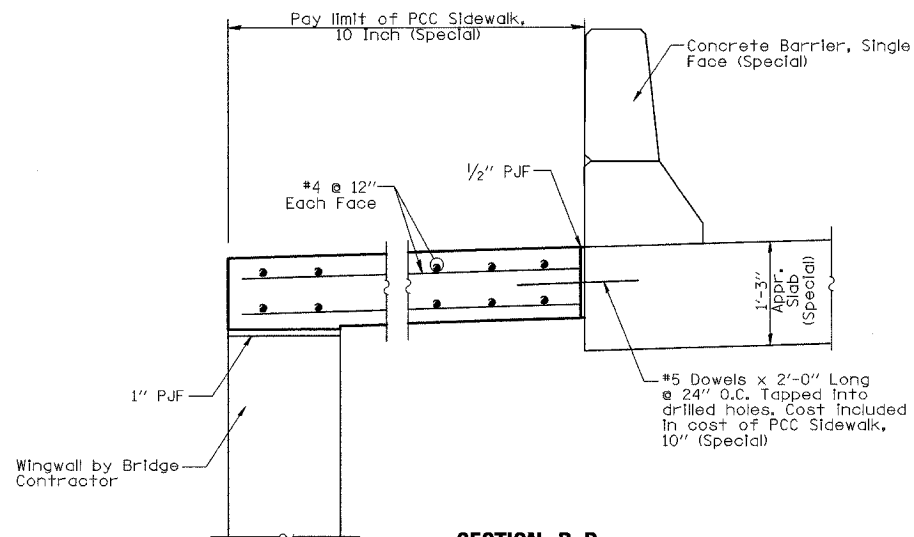
**PORTLAND CEMENT CONCRETE SIDEWALK, 10 INCH (SPECIAL)**



**PLAN**  
(East Abutment Shown,  
West Abutment Similar)



**SECTION A-A**  
(East Abutment Shown,  
West Abutment Similar)



**SECTION B-B**

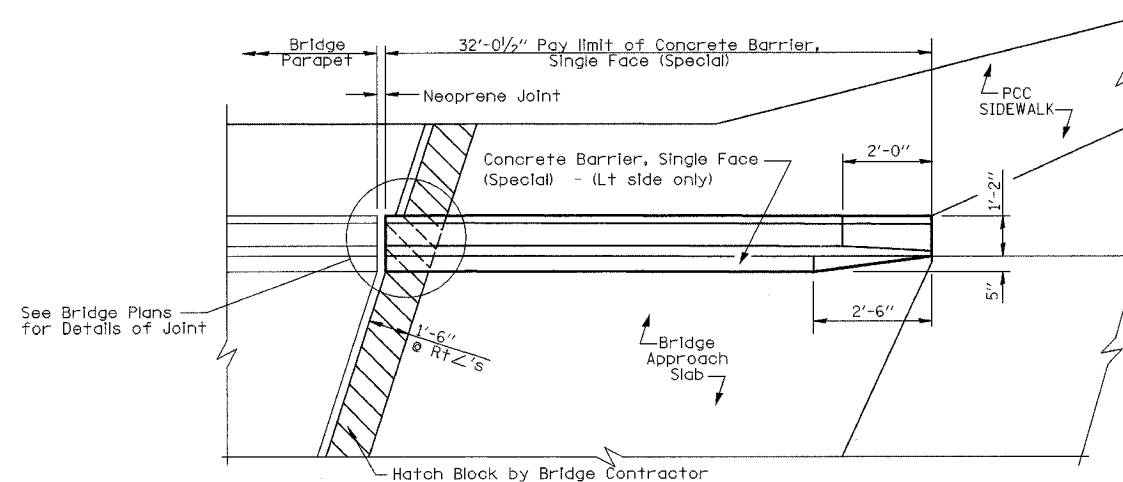
**DESIGN STRESSES**

$f_y = 60,000$  p.s.i.  
 $f'_c = 3,500$  p.s.i.

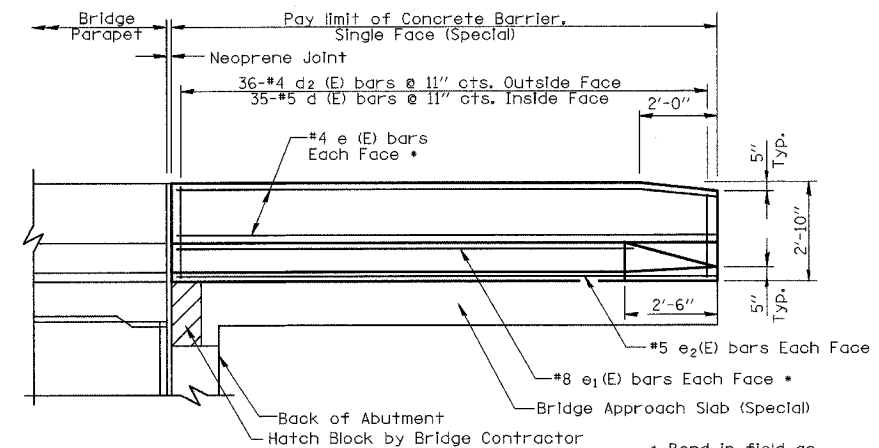
**GENERAL NOTE**

Bicycle Railing not shown.

**CONCRETE BARRIER, SINGLE FACE, (SPECIAL)**



**PLAN**  
(East Abutment Shown,  
West Abutment Similar)



**INSIDE ELEVATION**  
(East Abutment Shown,  
West Abutment Similar)

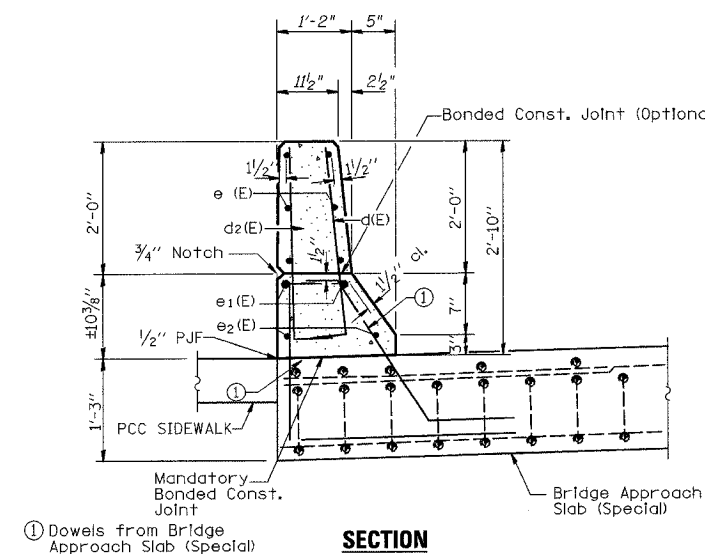
\* Bend in field as  
necessary at taper

**DESIGN STRESSES**

$f_y = 60,000$  p.s.i.  
 $f'_c = 3,500$  p.s.i.

**GENERAL NOTE**

Bicycle Railing not shown.



**SECTION**

① Dowels from Bridge  
Approach Slab (Special)

**BARS d (E) & d2 (E)**

REVISIONS	
NAME	DATE

ILLINOIS DEPARTMENT OF TRANSPORTATION

ROADWAY DETAILS

DATE 12/03

DRAWN BY MLO  
CHECKED BY SJK

F.A.P. RTE.	SECTION	COUNTY	TOTAL SHEETS	SHEET NO.
711	115(BY,BY-1)BR	VERMILION	93	72
FED. ROAD DIST. NO. 7		ILLINOIS	FED. AID PROJECT	
CONTRACT NO. 90843				