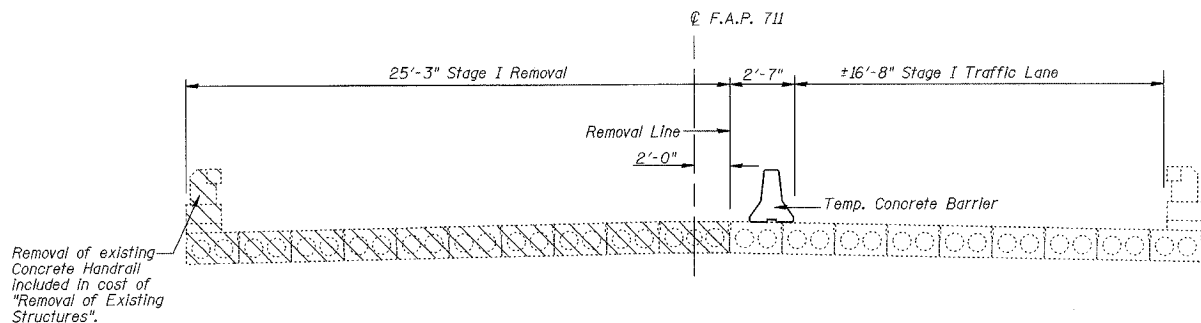


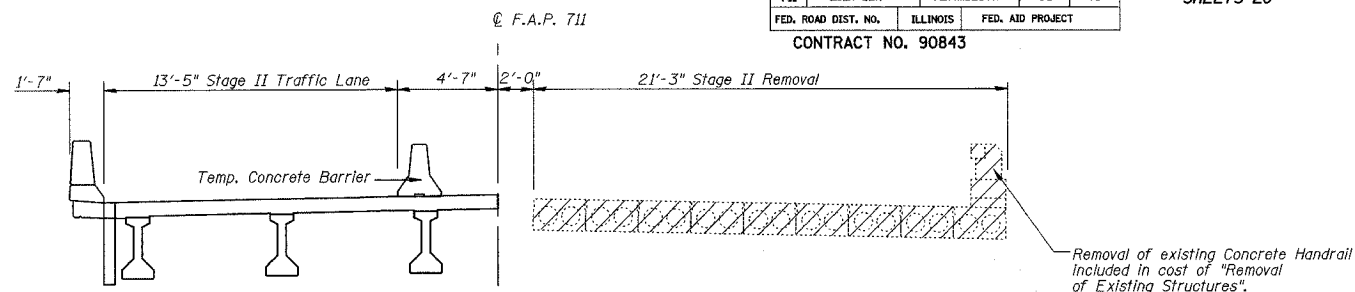
F.A.P. R/L	SECTION	COUNTY	TOTAL SHEETS	SHEET NO.
711	115(BY)-1(BR)	VERMILION	93	49
	FED. ROAD DIST. NO.	ILLINOIS	FED. AID PROJECT	

SHEET NO. 2
SHEETS 20

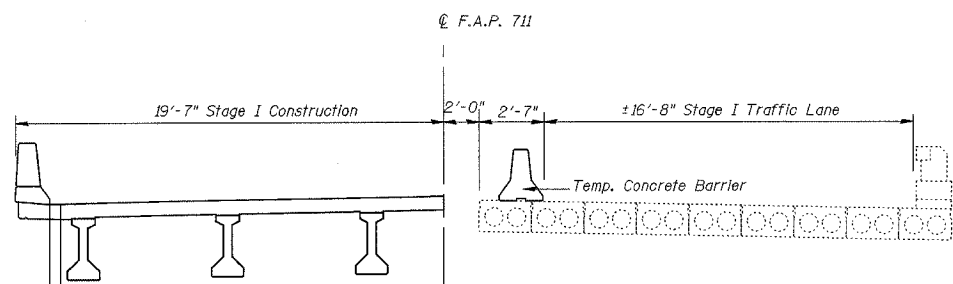
CONTRACT NO. 90843



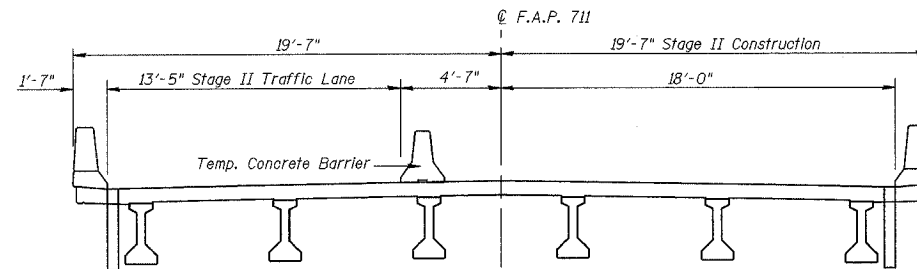
STAGE I REMOVAL
(Looking East)



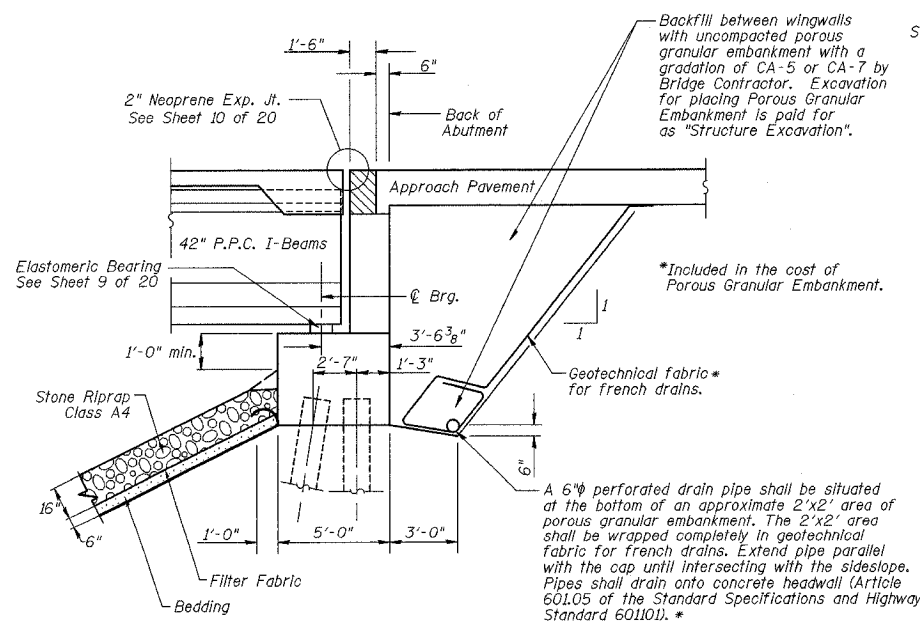
STAGE II REMOVAL
(Looking East)



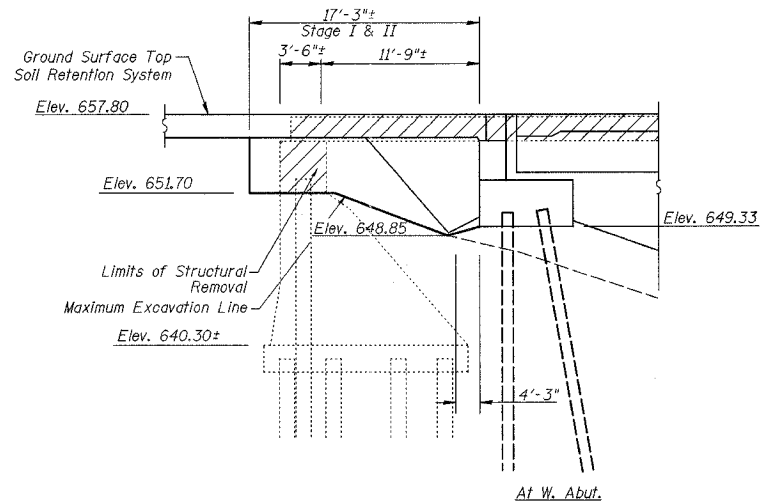
STAGE I CONSTRUCTION
(Looking East)



STAGE II CONSTRUCTION
(Looking East)

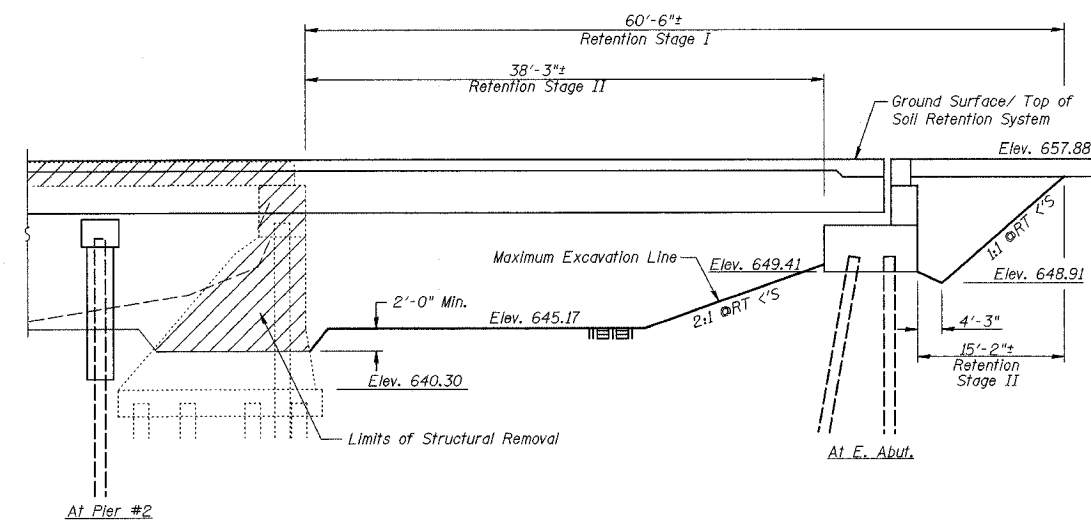


SECTION THRU PILE BENT ABUTMENT
(Dim's at Rt. L's)



TEMPORARY SOIL RETENTION SYSTEM

(All Dimensions along C. Bridge unless noted otherwise)



Notes:

A cantilevered sheet piling design does not appear feasible and additional members or other retention systems may be necessary. The Contractor shall submit a temporary soil retention system design including plan details and calculations for review and acceptance by the Engineer.

Contractor's design to include provisions for retaining soil below Abutment cap between counterforts.

ILLINOIS DEPARTMENT OF TRANSPORTATION
STAGE CONSTRUCTION DETAILS
U.S. ROUTE 136 OVER
BEAN CREEK
F.A.P. ROUTE 711
SECTION 115(BY)-1(BR)
VERMILION COUNTY
STA. 286+77.00
STRUCTURE NUMBER 092-0201

DATE: OCT. 2003

DRAWN BY: MLO/NJV
CHECKED BY: PBB/SJK