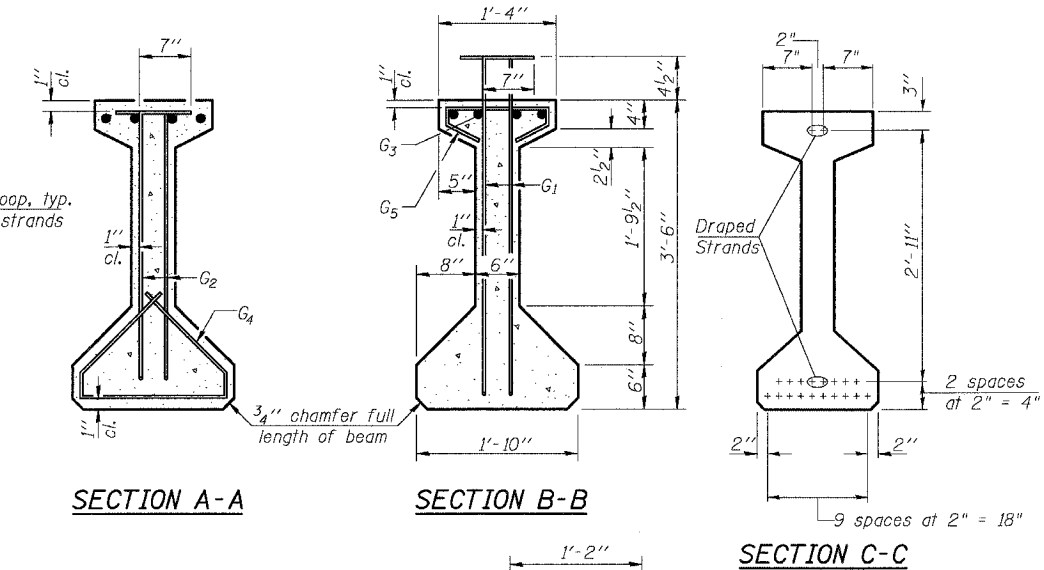


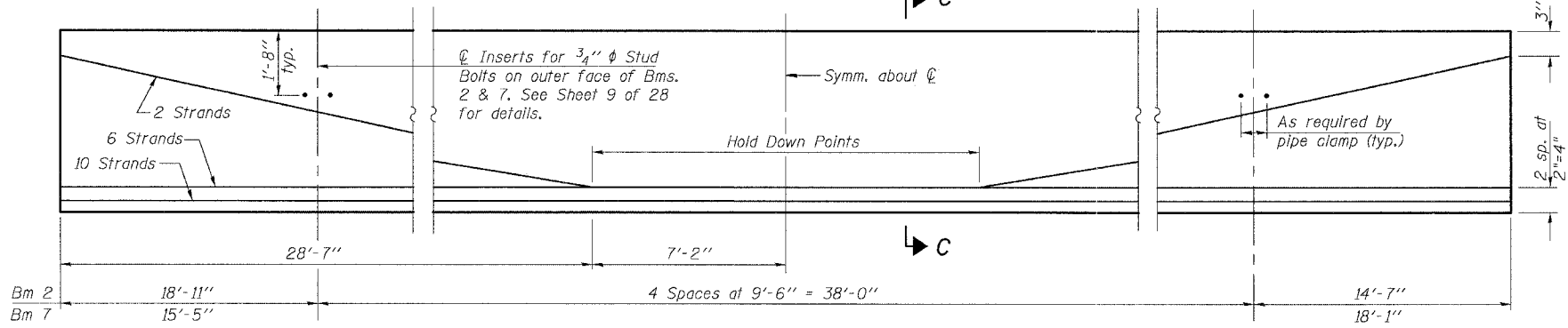
**ELEVATION OF BEAM**  
(Showing Reinforcement & Dimensions)



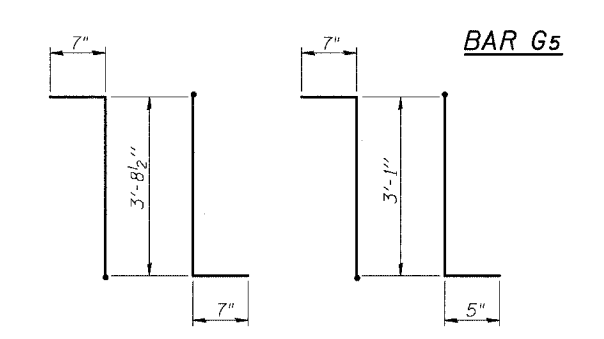
**SECTION A-A**

**SECTION B-B**

**SECTION C-C**

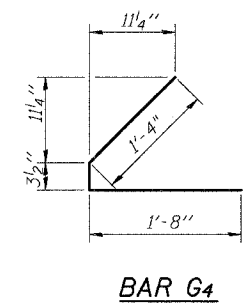


**ELEVATION OF BEAM**  
(Showing Prestressing Steel)



**BAR G1**

**BAR G2**



**BAR G4**

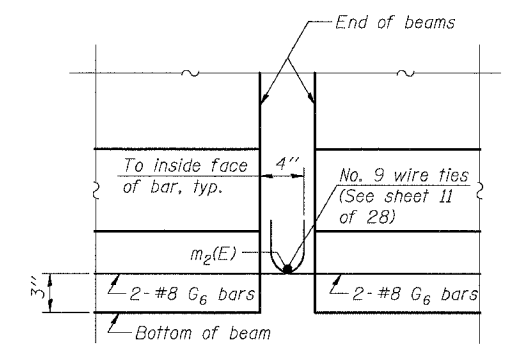
**\*BAR LIST**

Bar	No.	Size	Length	Shape
G1	110	#5	4'-10 1/2"	TL
G2	12	#6	4'-1"	TL
G3	12	#6	25'-6"	—
G4	48	#3	3'-3 1/2"	U
G5	72	#3	2'-7"	U
G6	4	#8	3'-6"	U

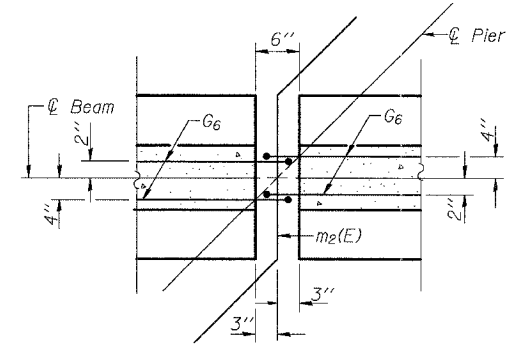
\*For one beam only.

**BILL OF MATERIAL-SPAN 2**

Item	Unit	Total
Furnishing and Erecting Precast Prestressed Concrete I-Beams, 42"	Ft.	501



**ELEVATION**



**PLAN**

**DETAIL "A"**

**NOTES**

Prestressing steel shall be uncoated high strength, low relaxation 7-wire strand, Grade 270.  
The nominal diameter shall be 1/2" and the nominal cross-sectional area shall be 0.153 sq. in.  
Non-prestressing steel shall conform to AASHTO designation M-31 or M-322 Grade 60.  
Lifting loops shall be 2-1/2" 270 ksi strands, as shown.  
Required release strength, f'ci, shall be 5000 psi.  
Reinforcement bars designated (E) shall be epoxy coated.

ILLINOIS DEPARTMENT OF TRANSPORTATION

SHEET TITLE: BEAM DETAILS-SPAN 2

PROJECT: US RTE 136 OVER BLUEGRASS CREEK  
FAP ROUTE 711 SECTION 115(BY)BR  
VERMILION COUNTY  
STATION 236+24.70  
STRUCTURE NUMBER 092-0200

DESIGNED BY: KPS/CME/MCB  
DRAWING NO.

COOMBE-BLOXDORF P.C.  
Engineers / Land Surveyors  
Springfield, Illinois  
Design Firm License No. 184-002703

16 OF 28 SHTS