

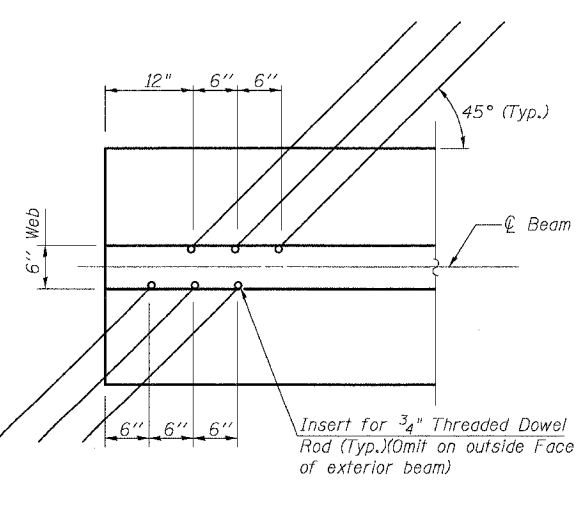
***BAR LIST**

Bar	No.	Size	Length	Shape
G1	94	#5	4'-10 1/2"	TL
G2	12	#6	4'-1"	TL
G3	8	#6	30'-7"	—
G4	48	#3	3'-3 1/2"	—
G5	59	#3	2'-7"	—
G6	2	#8	3'-6"	—

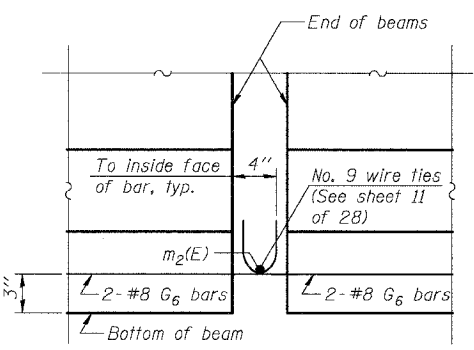
*For one beam only.

DIMENSION TABLE

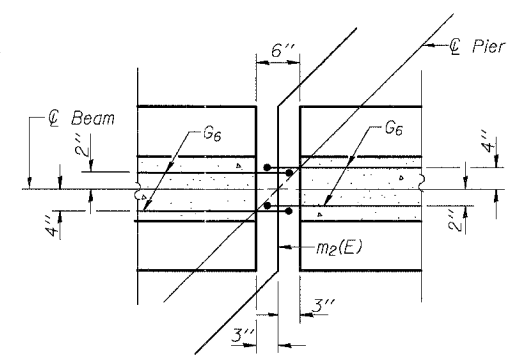
	A	B
Bm 2, Span 1	20'-3"	14'-7"
Bm 7, Span 1	16'-9"	18'-1"
Bm 2, Span 3	15'-11"	18'-11"
Bm 7, Span 3	19'-5"	15'-5"



DETAIL "B"



ELEVATION



PLAN

DETAIL "A"

NOTES

Prestressing steel shall be uncoated high strength, low relaxation 7-wire strand, Grade 270.
 The nominal diameter shall be 1/2" and the nominal cross-sectional area shall be 0.153 sq. in.
 Non-prestressing steel shall conform to AASHTO designation M-31 or M-322 Grade 60.
 Lifting loops shall be 2-1/2" #270 ksi strands, as shown.
 Required release strength, f'ci, shall be 5000 psi.
 Reinforcement bars designated (E) shall be epoxy coated.
 Inserts for 3/4" threaded dowel rods are to be two strut coil type for interior I-Beams and single coil flared loop type for exterior I-Beams.

BILL OF MATERIAL-SPANS 1 AND 3

Item	Unit	Total
Furnishing and Erecting Precast Prestressed Concrete I-Beams, 42"	Ft.	824

ILLINOIS DEPARTMENT OF TRANSPORTATION

SHEET TITLE: BEAM DETAILS-SPANS 1 AND 3

PROJECT: US RTE 136 OVER BLUEGRASS CREEK, FAP ROUTE 711 SECTION 115(BY)BR, VERMILION COUNTY, STATION 236+24.70, STRUCTURE NUMBER 092-0200

DESIGNED BY: TFG
 CHECKED BY: KPS/CME/MCB
 DRAWING NO.

COOMBE-BLOXDORF P.C.
 Engineers / Land Surveyors
 Springfield, Illinois
 Design Firm License No. 184-002703

15 OF 28 SHTS