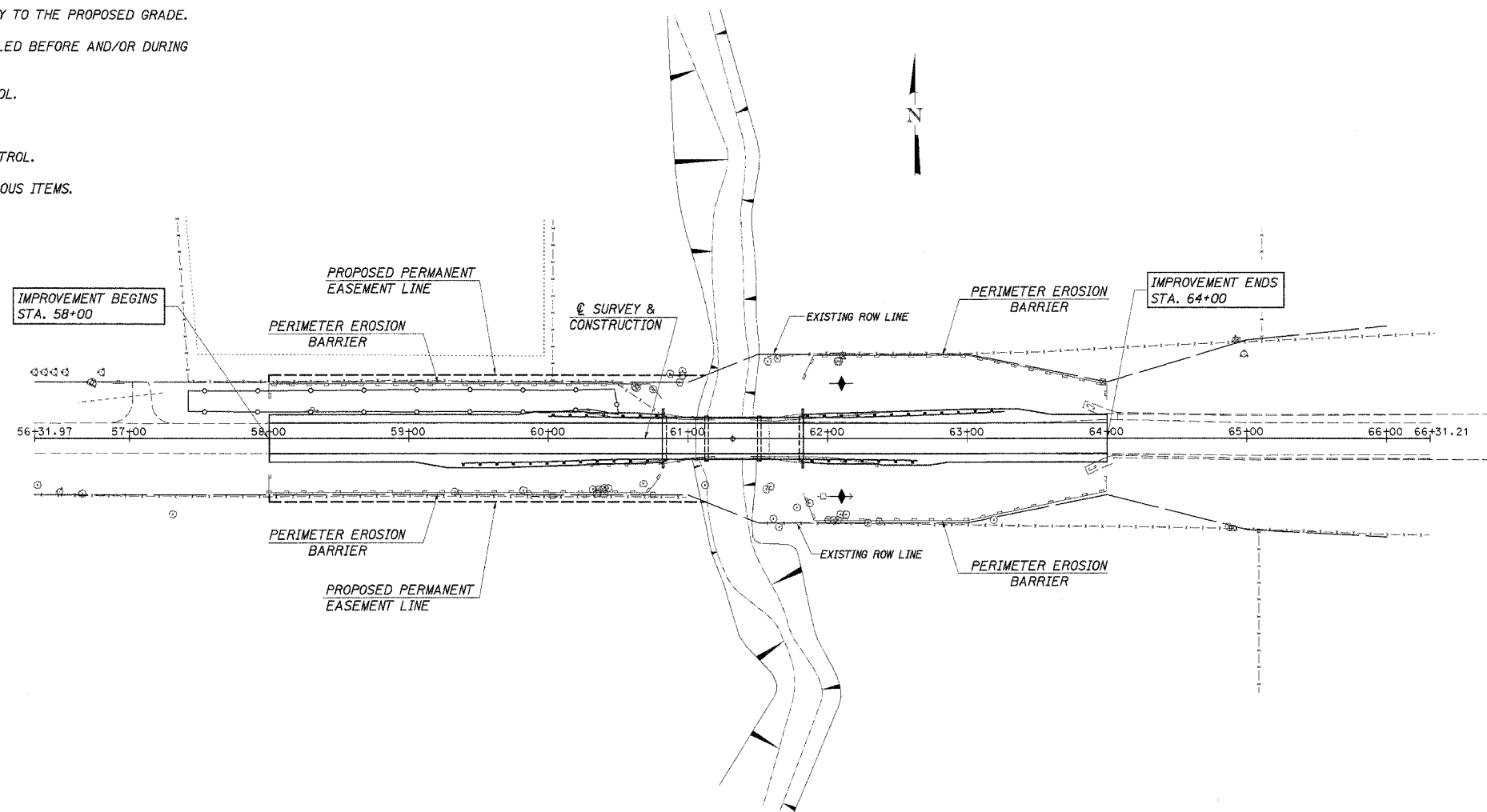


ROUTE NO.	SECTION	COUNTY	TOTAL SHEETS	SHEET NO.
FAS 467 C.H. 5	03-00027 -11-BR	TAZEWELL	24	24
		ILLINOIS	PROJ. BRS-467(104)	

CONTRACT NO. 89361

DESCRIPTION OF INTENDED SEQUENCE OF MAJOR CONSTRUCTION ACTIVITIES WHICH WILL DISTURB EARTH AND LEAD TO POSSIBLE EROSION FOR MAJOR PORTIONS OF THE CONSTRUCTION SITE:

1. PLACEMENT OF PERIMETER EROSION CONTROL FENCE PRIOR TO THE COMMENCEMENT OF ANY ROAD OR BRIDGE WORK. SEE STD. 280001.
2. REMOVAL OF EXISTING STRUCTURE.
3. CONSTRUCTION OF THE REPLACEMENT STRUCTURE.
4. PLACEMENT OF ROADWAY EMBANKMENT TO RAISE THE ROADWAY TO THE PROPOSED GRADE.
5. DRAINAGE STRUCTURES, INCLUDING DITCHES, WILL BE INSTALLED BEFORE AND/OR DURING THE COMPLETION OF THE EMBANKMENT.
6. PLACEMENT AND MAINTENANCE OF TEMPORARY EROSION CONTROL.
7. PLACEMENT OF PERMANENT EROSION CONTROL.
8. REMOVAL AND PROPER CLEAN UP OF TEMPORARY EROSION CONTROL.
9. FINAL GRADING, PLACING AGGREGATE AND OTHER MISCELLANEOUS ITEMS.



TEMPORARY EROSION CONTROL:	
	PERIMETER EROSION BARRIER
	TEMPORARY DITCH CHECK
PERMANENT EROSION CONTROL:	
	SEEDING CLASS 2, FERTILIZERS, & MULCH, METHOD 2

TEMPORARY DITCH CHECKS

LT. & RT. STA 62+10 = 2 EACH

BILL OF MATERIAL

ITEM	UNIT	QUANTITY
TEMPORARY EROSION CONTROL SEEDINGS	POUND	130
TEMPORARY DITCH CHECKS	EACH	2
PERIMETER EROSION BARRIER	FOOT	840

THE ABOVE QUANTITIES ARE ESTIMATES ONLY. ACTUAL QUANTITIES FOR EROSION CONTROL WILL BE DETERMINED BY THE ENGINEER IN THE FIELD AND THERE WILL BE NO ADJUSTMENT IN ANY PRICE DUE TO A CHANGE IN PLAN QUANTITY.

EROSION CONTROL PLAN

SECTION 03-00027-11-BR
COUNTY HIGHWAY 5
TAZEWELL COUNTY
STA. 61+32

4440 ASH GROVE
SPRINGFIELD, IL 62711
(217) 793-8600
oasinc@tamvid.com

OZYURT AND STONE, INC.
CONSULTING ENGINEERS

JOB NO.: 0313
FILE: EROSION.DGN
DATE: 12-30-04