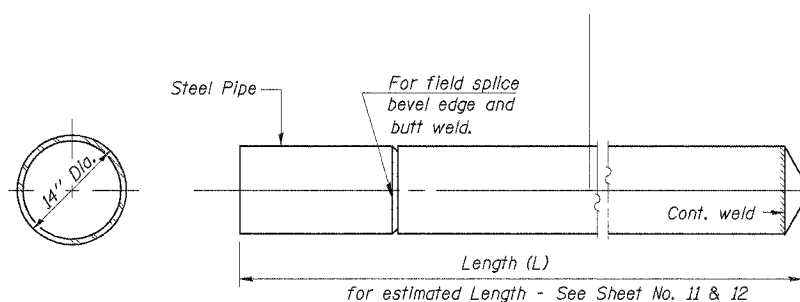


| ROUTE NO. | SECTION | COUNTY | TOTAL SHEETS | SHEET NO. |
|-------------------|--------------------|----------|--------------------|-----------|
| C.H. 5 FAS 467 | 03-00027 -11-BR | TAZEWELL | 24 | 18 |
| | | ILLINOIS | PROJ. BRS-467(104) | |

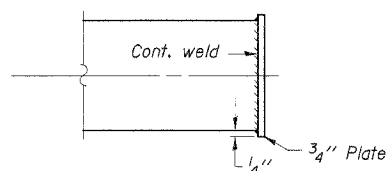
CONTRACT NO. 89361

Sheet 14 of 15

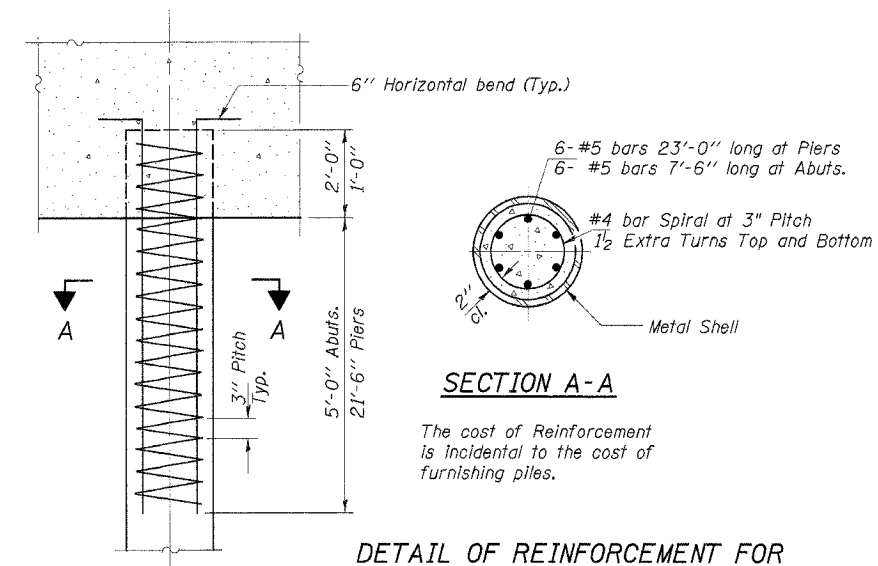
Notes: Driving and bearing ends of pipe shall be cut square.
The thickness of the shell shall be 0.250 inches with a tolerance of 5%. The shell shall be in accordance with Article 1006.05(a) of the Standard Specifications.



DETAIL OF CYLINDRICAL STEEL SHELL
FOR CAST IN PLACE CONCRETE PILES



OPTIONAL FLAT END



SECTION A-A

The cost of Reinforcement is incidental to the cost of furnishing piles.

DETAIL OF REINFORCEMENT FOR
METAL SHELLS

DETAIL OF METAL SHELL FOR CAST IN PLACE CONCRETE PILES

| | |
|----------|-------------------------|
| DESIGNED | S.F.M. |
| CHECKED | P.S.L. & F.J.S. |
| DRAWN | K.T.R., J.P.S. & S.A.P. |
| CHECKED | S.F.M. |

CONCRETE PILE DETAILS

SECTION 03-00027-11-BR
COUNTY HIGHWAY 5
TAZEWELL COUNTY
STA. 61+32

4440 ASH GROVE
SPRINGFIELD, IL 62711
(217) 798-8600
oasinc@amvid.com

OZYURT AND STONE, INC.
CONSULTING ENGINEERS

JOB NO.: 0313
FILE: METAL_H.DGN
DATE: 12/30/04