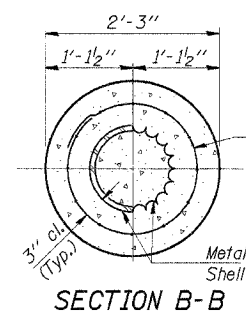
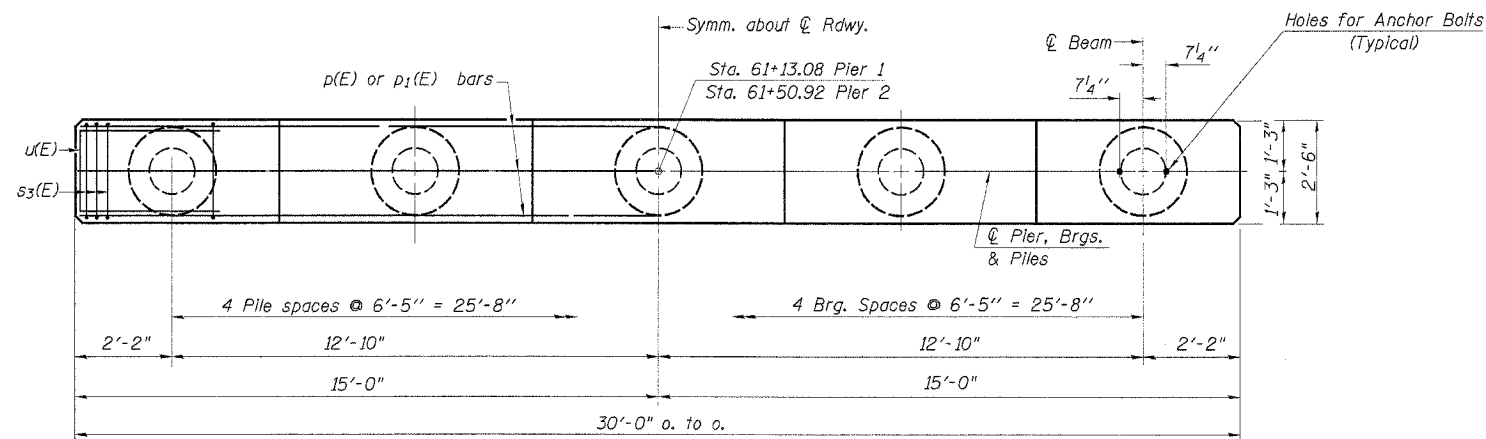
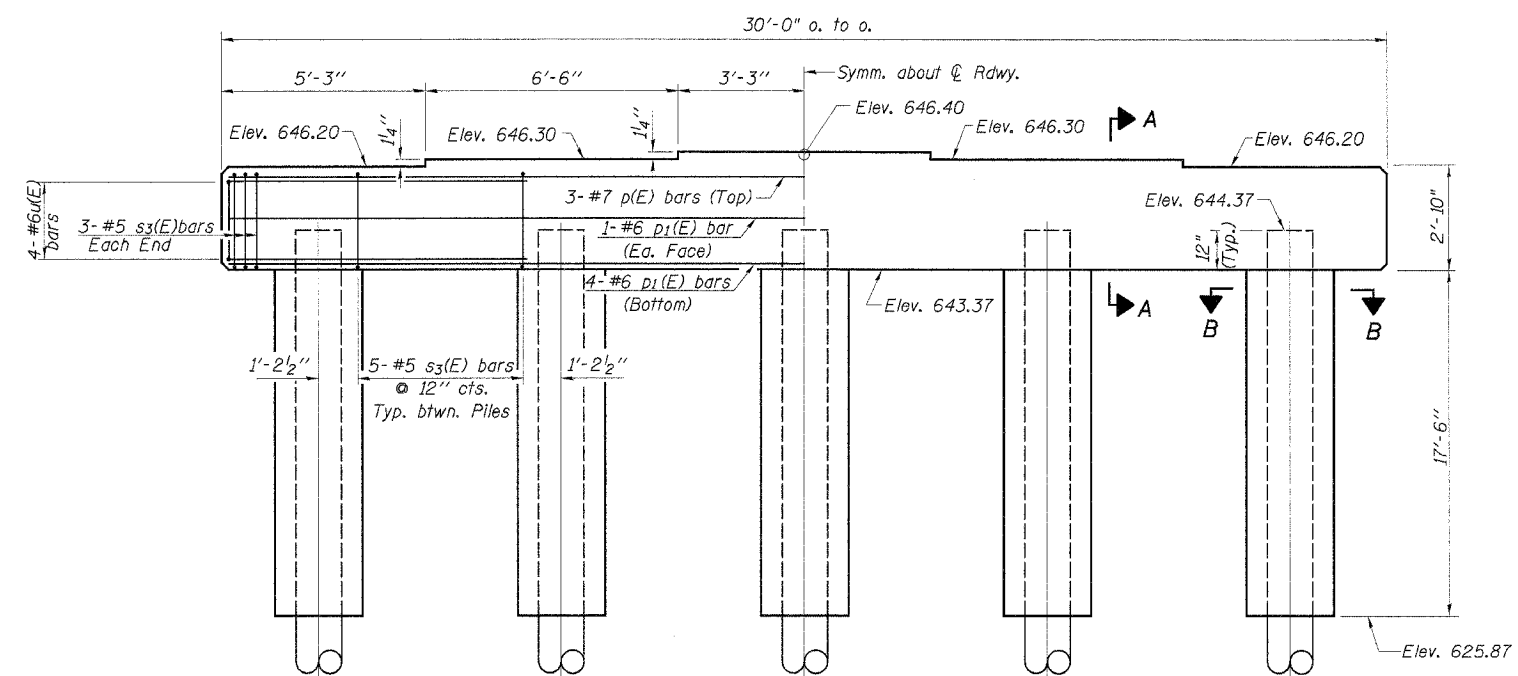
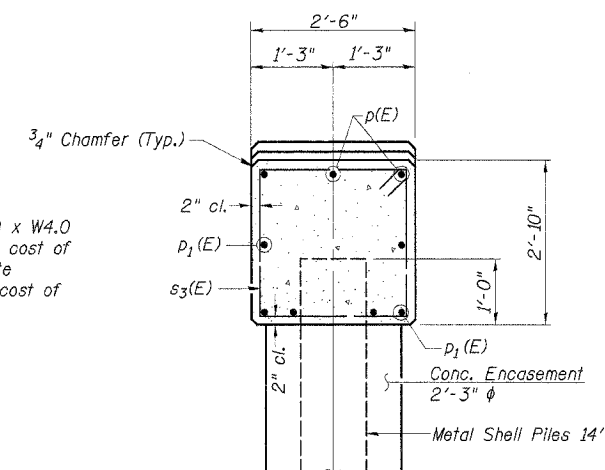


ROUTE NO.	SECTION	COUNTY	TOTAL SHEETS	SHEET NO.
C.H. 5 FAS 467	03-00027 -11-BR	TAZEWELL	24	16
		ILLINOIS	PROJ. BRS-467(04)	

CONTRACT NO. 89361 Sheet 12 of 15



Welded wire fabric 6 x 6-W4.0 x W4.0 weighing 58#/100 sq. ft. The cost of welded wire fabric and Concrete Encasement is included in the cost of Concrete Encasement.



PILE DATA

Type _____ Metal Shell 14"

Capacity _____ 50 Ton

Est. Length _____ 61 Feet/Pile Pier 1
77 Feet/Pile Pier 2

No. Req'd (2 Piers) _____ 10*

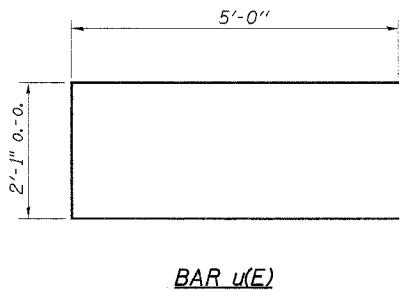
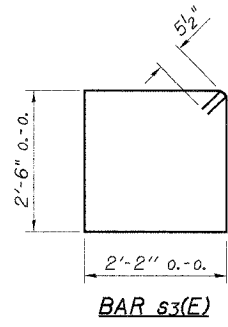
*One Metal Shell Test Pile 14", shall be driven in a permanent location at Pier 2.

BILL OF MATERIAL - 2 PIERS

BAR	NO.	SIZE	LENGTH	SHAPE
$p(E)$	6	#7	29'-8"	—
$p_1(E)$	12	#6	29'-8"	—
$s_3(E)$	52	#5	10'-3"	□
$u(E)$	16	#6	12'-1"	□
Concrete Structures			Cu. Yd.	15.8
Reinforcement Bars, Epoxy Coated			Pound	1750
Metal Shell Piles 14"			Foot	613
Test Pile Metal Shells			Each	1
Concrete Encasement			Cu. Yd.	19.0

Reinforcement bars designated (E) shall be epoxy coated.

DESIGNED	S.F.M.
CHECKED	P.S.L. & F.J.S.
DRAWN	K.T.R., J.P.S. & S.A.P.
CHECKED	S.F.M.



PIERS

SECTION 03-00027-11-BR
COUNTY HIGHWAY 5
TAZEWELL COUNTY
STA. 61+32

4440 ASH GROVE SPRINGFIELD, IL 62711 (217) 793-8600 oasinc@tamvid.com	OZYURT AND STONE, INC. CONSULTING ENGINEERS	JOB NO.: 0313 FILE: PIER1.DGN DATE: 12/30/04
--	---	--