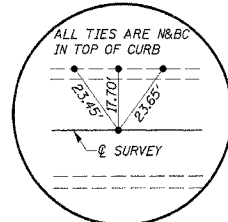
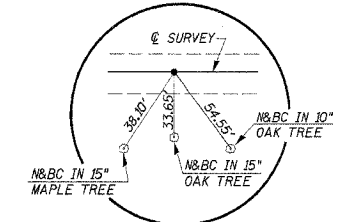


S.W. 1/4, SEC. 1, T. 24 N., R. 4 W., 3RD P.M.
REUBEN ROPP EST.

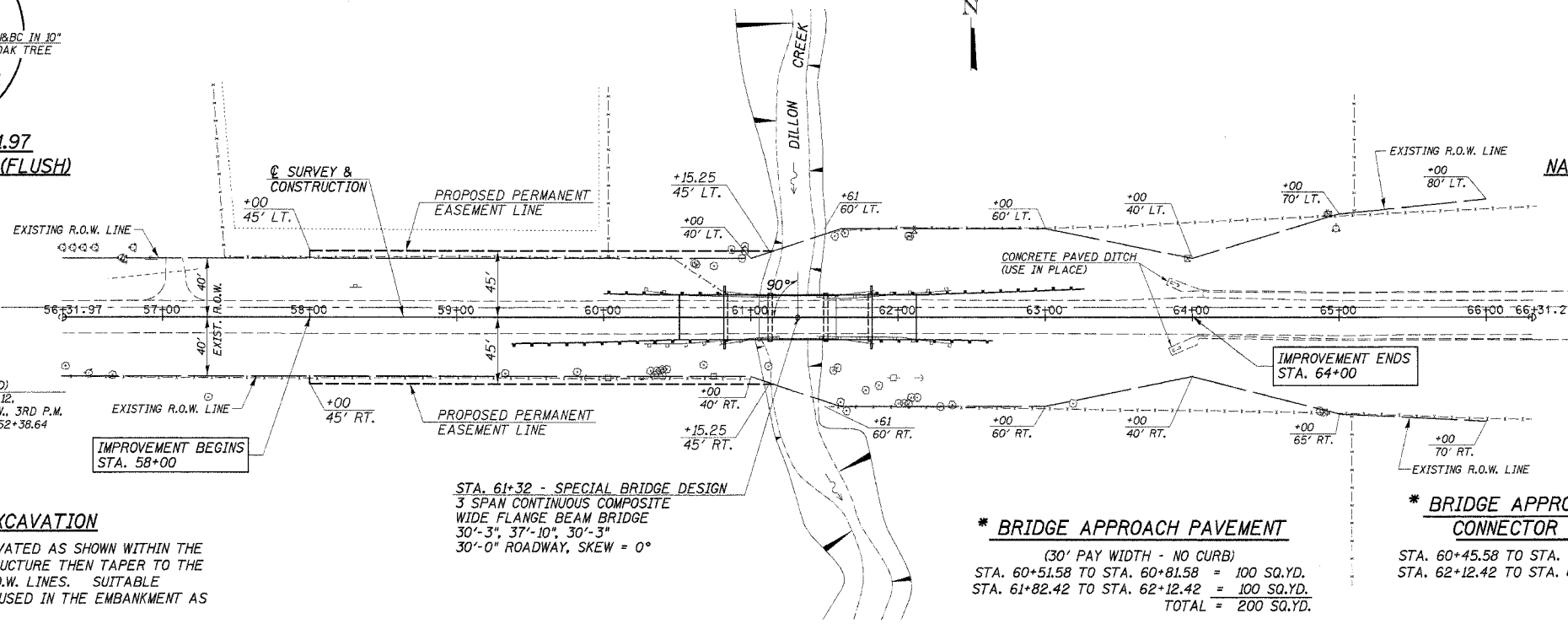
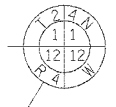
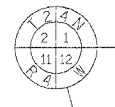
ROUTE	SECTION	COUNTY	TOTAL SHEETS	SHEET NO.
FAS 46703-00027	-II-BR	TAZEWELL	24	3
STA. 66+31.97	TO STA. 66+31.21	ILLINOIS	PRJ. BRS-467(04)	CONTRACT NO. 89361



P.O.T. STA. 56+31.97
NAIL & BOTTLE CAP (FLUSH)

P.O.T. STA. 66+31.21
NAIL & BOTTLE CAP (FLUSH)

EXISTING S.N. 090-3021:
SINGLE SPAN STEEL I-BEAM BRIDGE WITH CONCRETE DECK ON CLOSED TIMBER ABUTMENTS WITH PRECAST CONCRETE PILES AND TIMBER BACKING AND CONCRETE ABUTMENT CAP. 58.0' BK.-BK. ABUTS., 28.33' O.-O. DECK
REMOVAL OF EXISTING STRUCTURES = 1 EACH



CHANNEL EXCAVATION
THE CHANNEL SHALL BE EXCAVATED AS SHOWN WITHIN THE LIMITS OF THE PROPOSED STRUCTURE THEN TAPER TO THE EXISTING CHANNEL AT THE R.O.W. LINES. SUITABLE EXCAVATED MATERIAL TO BE USED IN THE EMBANKMENT AS DIRECTED BY THE ENGINEER.
CHANNEL EXCAVATION = 760 CU. YD.

STA. 61+32 - SPECIAL BRIDGE DESIGN
3 SPAN CONTINUOUS COMPOSITE WIDE FLANGE BEAM BRIDGE
30'-3", 37'-10", 30'-3"
30'-0" ROADWAY, SKEW = 0°

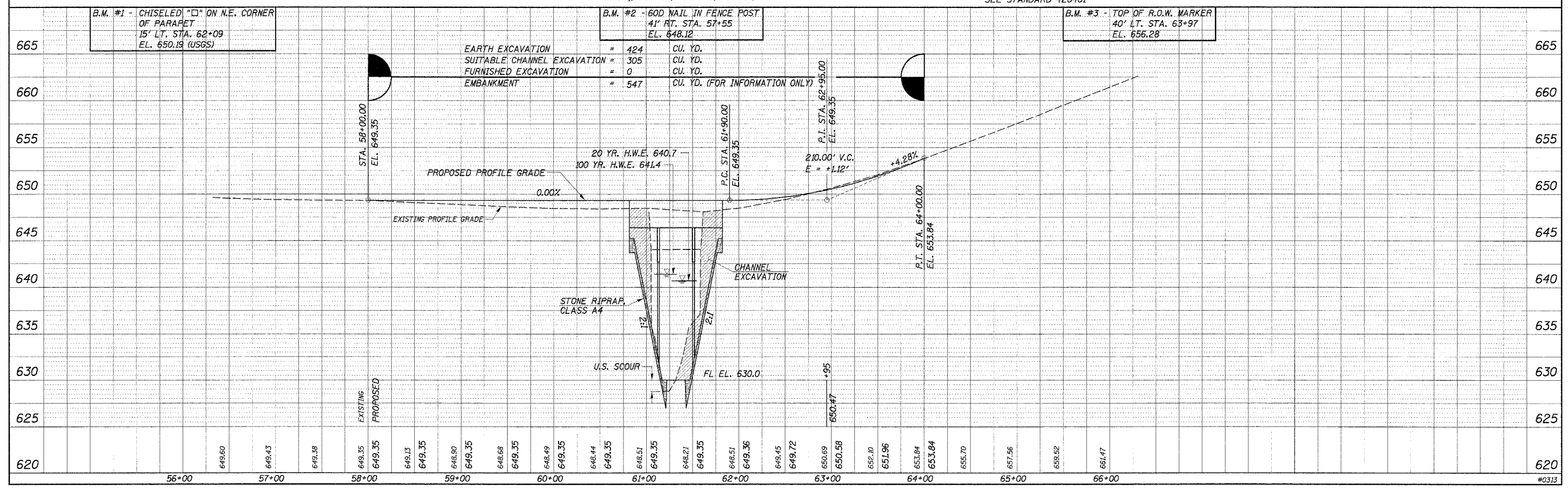
*** BRIDGE APPROACH PAVEMENT**
(30' PAY WIDTH - NO CURB)
STA. 60+51.58 TO STA. 60+81.58 = 100 SQ. YD.
STA. 61+82.42 TO STA. 62+12.42 = 100 SQ. YD.
TOTAL = 200 SQ. YD.

*** BRIDGE APPROACH PAVEMENT CONNECTOR (FLEXIBLE)**
STA. 60+45.58 TO STA. 60+51.58 = 20 SQ. YD.
STA. 62+12.42 TO STA. 62+18.42 = 20 SQ. YD.
TOTAL = 40 SQ. YD.

OVERHEAD POWER:
AMEREN CILCO
BURIED CABLE:
VERIZON
1-800-892-0123

DAN BAER
N.W. 1/4, SEC. 12, T. 24 N., R. 4 W., 3RD P.M.

* SEE STANDARD 420401



DATE	BY	DATE	BY

DATE	BY	DATE	BY