

ROUTE NO.	SECTION	COUNTY	TOTAL SHEETS	SH
FAS 467 C.H. 5	03-00027 -11-BR	TAZEWELL	24	
		ILLINOIS	PROJ. BRS-467(104)	

CONTRACT NO. 89361

STATE OF ILLINOIS DEPARTMENT OF TRANSPORTATION DIVISION OF HIGHWAYS PLANS FOR PROPOSED BRIDGE REPLACEMENT AND REHABILITATION PROGRAM

**SECTION 03-00027-11-BR
TAZEWELL COUNTY
PROJ. BRS-467(104)
COUNTY HIGHWAY 5 (F.A.S. RTE 467)
C-94-035-05**

INDEX OF SHEETS

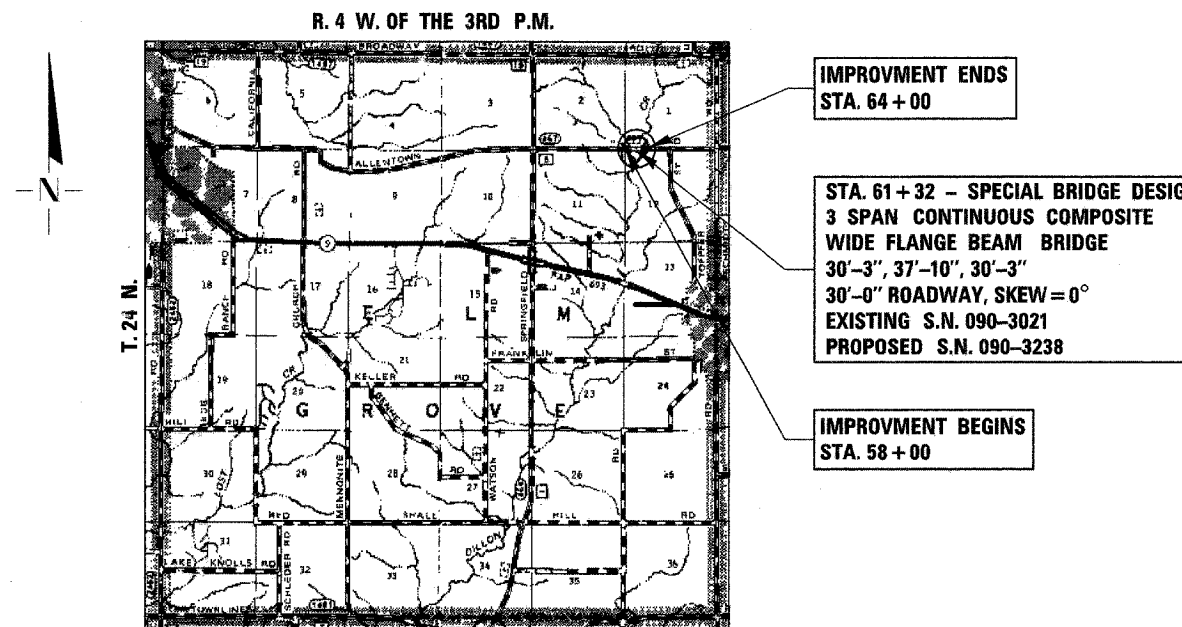
SHEET NO.	TITLE
1.	COVER SHEET
2.	SUMMARY OF QUANTITIES, GENERAL NOTES & TYPICAL SECTIONS
3.	PLAN AND PROFILE
4.	SHOULDER WIDENING AND GUARDRAIL DETAILS
5.-19.	BRIDGE PLANS
20.-23.	STATION CROSS SECTIONS
24.	EROSION CONTROL PLAN

STANDARDS

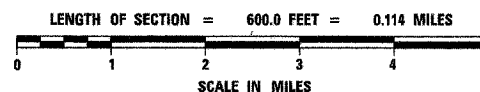
- 280001-02
- 420401-05
- 515001-02
- 601101
- 630001-05
- 630301-03
- 631032-01
- 635006-02
- 702001-05
- BLR 21-6

SCALES

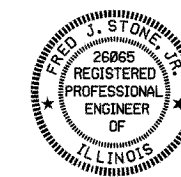
PLAN	0' 50' 100'
PROFILE HORIZ.	0' 50' 100'
PROFILE VERT.	0' 5' 10'
CROSS SECTIONS	0' 5' 10'



LOCATION PLAN



**MAJOR COLLECTOR (RURAL)
DESIGN TRAFFIC = DHV 100-200
CURRENT ADT = 800 (2005)
50 MPH DESIGN SPEED**



Fred J. Stone, Jr.
ILLINOIS PROFESSIONAL NO. 26065

EXPIRES 11-30-05

TOLL FREE JOINT UTILITY LOCATING
INFORMATION FOR EXCAVATORS (J.U.L.I.E.)
TELEPHONE NUMBER 1-800-892-0123

APPROVED	<i>January 8</i>	2005
	<i>Norman W. Johnson</i> COUNTY ENGINEER	
PASSED	<i>January 11</i>	2005
	<i>Y. H. T. T. T.</i> DISTRICT FOUR ENGINEER OF LOCAL ROADS & STREETS	
RELEASING FOR BID BASED ON LIMITED REVIEW	<i>Jan 12</i>	2005
	<i>Joseph E. Owen</i> DEPUTY DIRECTOR OF HIGHWAYS REGION THREE ENGINEER STATE OF ILLINOIS DEPARTMENT OF TRANSPORTATION	

4440 ASH GROVE
SPRINGFIELD, IL 62711
(217) 793-8600
oasinc@tamvid.com

OZYURT AND STONE, INC.
CONSULTING ENGINEERS