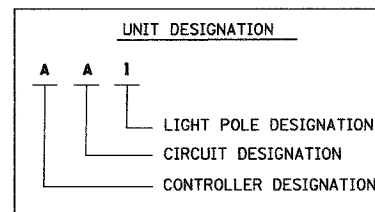
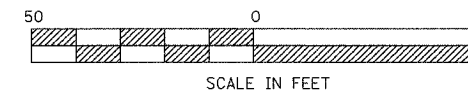
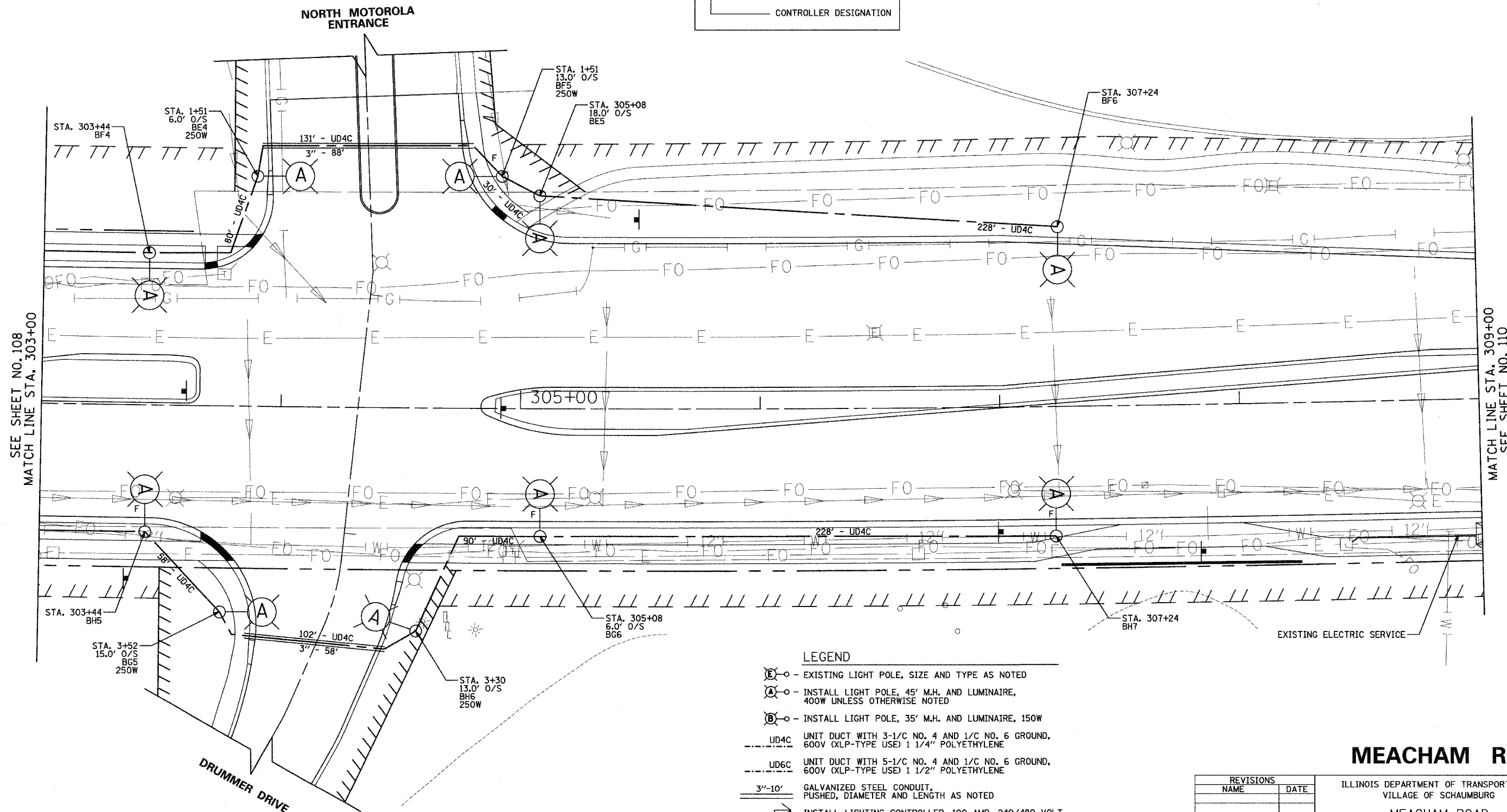
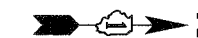


F.A.U. RTE.	SECTION	COUNTY	TOTAL SHEETS	SHEET NO.
2585	00-00068-01-WR	COOK	145	109
STA. 303+00 TO STA. 309+00		ILLINOIS FED. AID PROJECT		
FED. ROAD DIST. NO.		CONTRACT NO. 83785		



NO UNDERGROUND SPLICING ALLOWED



SEE SHEET NO. 108  
MATCH LINE STA. 303+00

MATCH LINE STA. 309+00  
SEE SHEET NO. 110

**LEGEND**

- ⊙ - EXISTING LIGHT POLE, SIZE AND TYPE AS NOTED
- Ⓐ - INSTALL LIGHT POLE, 45' M.H. AND LUMINAIRE, 400W UNLESS OTHERWISE NOTED
- Ⓑ - INSTALL LIGHT POLE, 35' M.H. AND LUMINAIRE, 150W
- UD4C UNIT DUCT WITH 3-1/C NO. 4 AND 1/C NO. 6 GROUND, 600V (XLP-TYPE USE) 1 1/4" POLYETHYLENE
- UD6C UNIT DUCT WITH 5-1/C NO. 4 AND 1/C NO. 6 GROUND, 600V (XLP-TYPE USE) 1 1/2" POLYETHYLENE
- 3"-10' GALVANIZED STEEL CONDUIT, PUSHED, DIAMETER AND LENGTH AS NOTED
- ▣ INSTALL LIGHTING CONTROLLER, 100 AMP, 240/480 VOLT
- ▢ EXISTING LIGHTING CONTROLLER, 100 AMP, 240/480 VOLT
- ▣ INSTALL HANDHOLE
- F INSTALL OFFSET FOUNDATION SEE SHEET 115

**NOTE**

1. POLES SHOULD BE OFFSET 7.0' FROM EDGE OF PAVEMENT, UNLESS OTHERWISE NOTED

**MEACHAM ROAD**

ILLINOIS DEPARTMENT OF TRANSPORTATION  
VILLAGE OF SCHAUMBURG  
MEACHAM ROAD  
LIGHTING IMPROVEMENTS  
POLE INSTALLATION PLAN  
STA. 303+00 TO STA. 309+00

REVISIONS	
NAME	DATE

SCALE: 1"=20'  
DATE: DECEMBER 2004  
DRAWN BY: KDM  
CHECKED BY: JMV