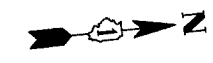


TRAFFIC SIGNAL LEGEND

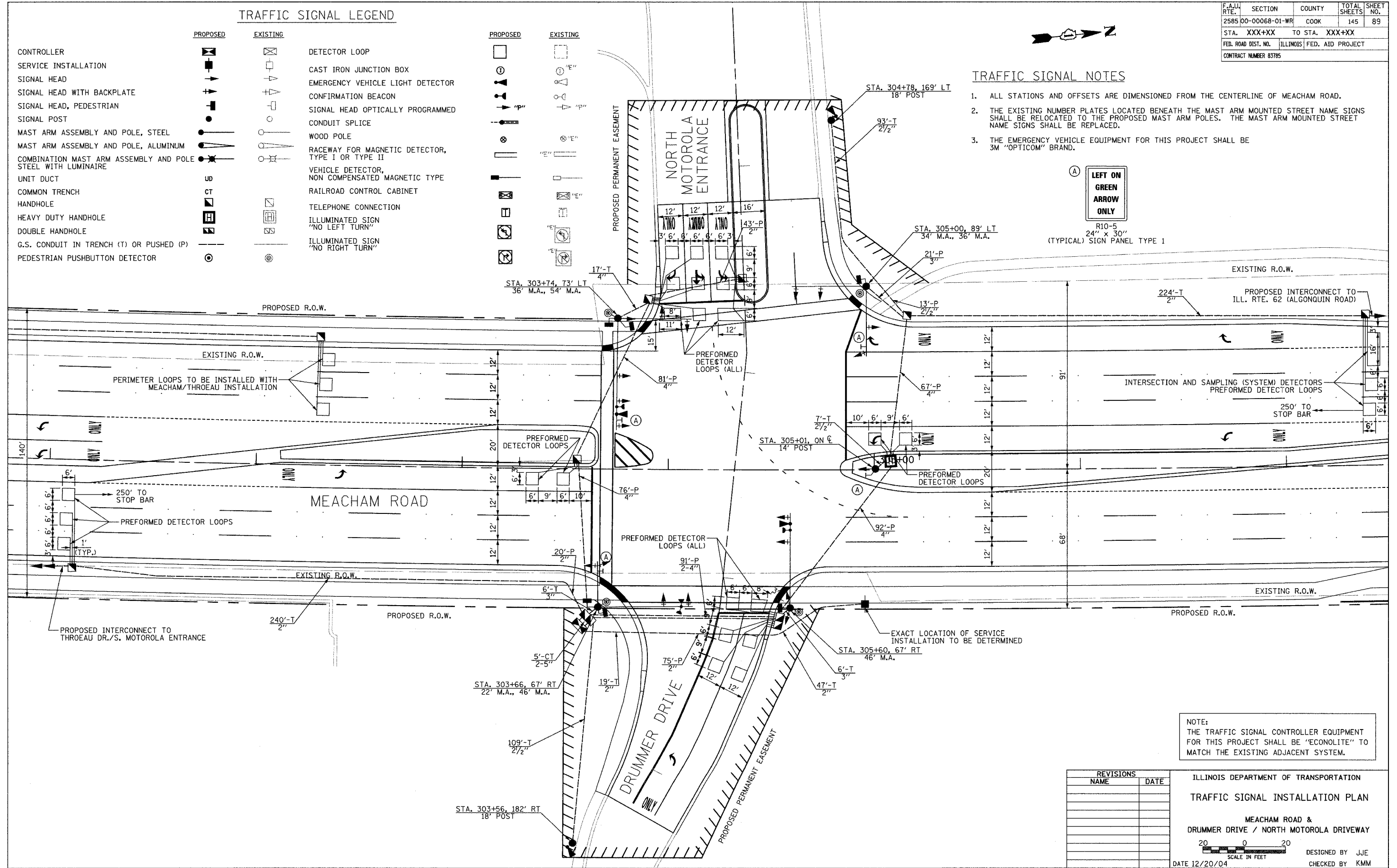
	PROPOSED	EXISTING		PROPOSED	EXISTING
CONTROLLER			DETECTOR LOOP		
SERVICE INSTALLATION			CAST IRON JUNCTION BOX		
SIGNAL HEAD			EMERGENCY VEHICLE LIGHT DETECTOR		
SIGNAL HEAD WITH BACKPLATE			CONFIRMATION BEACON		
SIGNAL HEAD, PEDESTRIAN			SIGNAL HEAD OPTICALLY PROGRAMMED		
SIGNAL POST			CONDUIT SPLICE		
MAST ARM ASSEMBLY AND POLE, STEEL			WOOD POLE		
MAST ARM ASSEMBLY AND POLE, ALUMINUM			RACEWAY FOR MAGNETIC DETECTOR, TYPE I OR TYPE II		
COMBINATION MAST ARM ASSEMBLY AND POLE STEEL WITH LUMINAIRE			VEHICLE DETECTOR, NON COMPENSATED MAGNETIC TYPE		
UNIT DUCT			RAILROAD CONTROL CABINET		
COMMON TRENCH			TELEPHONE CONNECTION		
HANDHOLE			ILLUMINATED SIGN "NO LEFT TURN"		
HEAVY DUTY HANDHOLE			ILLUMINATED SIGN "NO RIGHT TURN"		
DOUBLE HANDHOLE					
G.S. CONDUIT IN TRENCH (T) OR PUSHED (P)					
PEDESTRIAN PUSHBUTTON DETECTOR					

F.A.U. RTE.	SECTION	COUNTY	TOTAL SHEETS	SHEET NO.
2585	00-00068-01-WR	COOK	145	89
STA. XXX+XX	TO STA. XXX+XX			
FED. ROAD DIST. NO.	ILLINOIS	FED. AID PROJECT		
CONTRACT NUMBER 83785				



TRAFFIC SIGNAL NOTES

1. ALL STATIONS AND OFFSETS ARE DIMENSIONED FROM THE CENTERLINE OF MEACHAM ROAD.
2. THE EXISTING NUMBER PLATES LOCATED BENEATH THE MAST ARM MOUNTED STREET NAME SIGNS SHALL BE RELOCATED TO THE PROPOSED MAST ARM POLES. THE MAST ARM MOUNTED STREET NAME SIGNS SHALL BE REPLACED.
3. THE EMERGENCY VEHICLE EQUIPMENT FOR THIS PROJECT SHALL BE 3M "OPTICOM" BRAND.



NOTE:  
THE TRAFFIC SIGNAL CONTROLLER EQUIPMENT FOR THIS PROJECT SHALL BE "ECONOLITE" TO MATCH THE EXISTING ADJACENT SYSTEM.

REVISIONS	
NAME	DATE

ILLINOIS DEPARTMENT OF TRANSPORTATION  
**TRAFFIC SIGNAL INSTALLATION PLAN**  
 MEACHAM ROAD &  
 DRUMMER DRIVE / NORTH MOTOROLA DRIVEWAY  
  
 SCALE IN FEET  
 DESIGNED BY JJE  
 CHECKED BY KMM  
 DATE 12/20/04