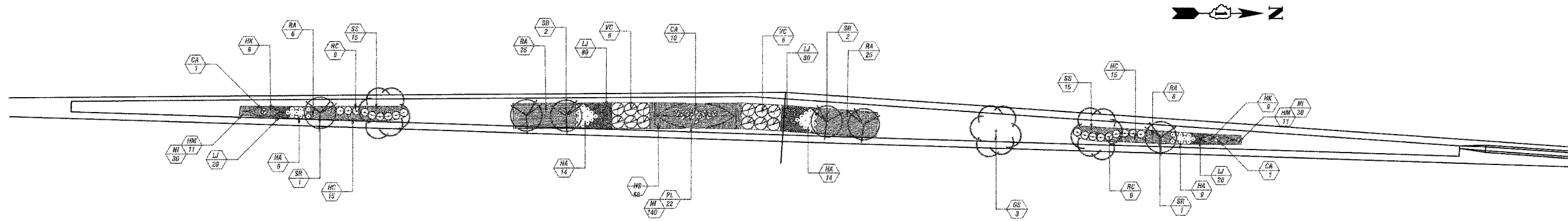


# PROPOSED LANDSCAPING

F.A.D. RTE.	SECTION	COUNTY	TOTAL SHEETS	SHEET NO.
2585	00-00068-01-WR	COOK	145	63
CONTRACT NO. 83785				



PLANT LIST FOR MEDIAN #1

PLANT LIST				PLANT LIST				PLANT LIST				PLANT LIST			
KEY	COMMON NAME	BOTANICAL NAME	QTY	KEY	COMMON NAME	BOTANICAL NAME	QTY	KEY	COMMON NAME	BOTANICAL NAME	QTY	KEY	COMMON NAME	BOTANICAL NAME	QTY
GS	SHADEMASTER HONEYLOCUST	GLEDITSIA TRIACANTHOS 'SHADEMASTER'	3	HA	ANNABELLE HYDRANGEA	HYDRANGEA ARBORESCENS 'ANNABELLE'	46	HS	STELLA D'ORO DAYLILY	HEMEROCALLIS 'STELLA D'ORO'	60	CV	ZAGREB COREOPSIS	COREOPSIS VERTICILLATA 'ZAGREB'	-
GD	KENTUCKY COFFEETREE	GYMNOCLADUS DIOICUS	-	RC	CAREFREE BEAUTY SHRUB ROSE	ROSA RUGOSA 'CAREFREE BEAUTY'	18	HC	CHICAGO APACHE DAYLILY	HEMEROCALLIS 'CHICAGO APACHE'	30	HM	PURPLE PALACE CORAL BELLS	HEUCHERA MICRANTHA 'PURPLE PALACE'	22
<b>ORNAAMENTAL TREES</b>				<b>SHRUBS</b>				<b>PERENNIALS</b>				<b>PERENNIALS</b>			
MC	CHAPARRAL WEEPING MULBERRY	MORUS ALBA 'CHAPARRAL'	-	RS	SCARLET MEDILAND SHRUB ROSE	ROSA RUGOSA 'SCARLET MEDILAND'	-	HK	CHICAGO ORCHID DAYLILY	HEMEROCALLIS 'CHICAGO ORCHID'	18				
SR	IVORY SILK JAPANESE TREE LILAC	SYRINGA RETICULATA 'IVORY SILK'	6	VC	CHICAGO LUSTRE VIBURNUM	VIBURNUM DENTATUM 'CHICAGO LUSTRE'	12	PL	LONGIN RUSSIAN SAGE	PEROVSKIA ATRIPLICIFOLIA 'LONGIN'	22				
CA	KARL FOERSTER'S CALAMAGROSTIS	CALAMAGROSTIS ARUNDINACEA 'KARL FOERSTERS'	12	RA	GRO-LOW SUMAC	RHUS AROMATICA 'GRO-LOW'	62	LJ	JOHN BIRCH LILY-TURE	LIRIOPE 'JOHN BIRCH'	200				
MM	MAIDEN GRASS	MISCANTHUS SINENSIS 'GRACILLIMUS'	-	YF	ADAM'S NEEDLE YUCCA	YUCCA FILAMENTOSA 'ADAM'S NEEDLE'	-	AS	PAPRIKA YARROW	ACHILLEA x HYBRIDA 'PAPRIKA'	-				
				SO	INDIAN CURRANT CORALBERRY	SYMPHORICARPOS ORBICULATUS	-	SS	AUTUMN JOY SEDUM	SEDUM SPECTIBILE 'AUTUMN JOY'	30				
				NI	ICE FOLLIES DAFFODIL (BY OTHERS)	NARCISSUS 'ICE FOLLIES'	200	RF	GOLDSTURM RUDBECKIA	RUDBECKIA FULGIDA 'GOLDSTURM'	-				
				NS	SCARLET O'HARA DAFFODIL (BY OTHERS)	NARCISSUS 'SCARLET O'HARA'	-	BC	EVENING GLOW BERGENIA	BERGENIA CORDIFOLIA 'EVENING GLOW'	-				

# PROPOSED IRRIGATION

### IRRIGATION LEGEND

- 2 CONTROLLER (NUMBER DENOTES NUMBER OF ZONES)
- 1-1/2" BACKFLOW PREVENTER
- 1" QUICK COUPLER
- CURB STOP
- ELECTRIC VALVE (ALL VALVES 1" SIZE)
- 1" PIPE SIZE (DIAMETER AS INDICATED)
- POP-UP SPRAY HEAD (SIZE INDICATED)

### NOTES:

- 1.) ALL POP-UP SPRAY HEADS ARE TO BE TWELVE INCHES (12") IN HEIGHT UNLESS OTHERWISE NOTED.
- 2.) SEE IRRIGATION DETAILS FOR WATER TAP COMPLETE AND ELECTRIC VALVE INSTALLATION.
- 3.) SEE DRAINAGE AND UTILITY SHEETS FOR WATER SERVICE CONNECTION LOCATIONS

ITEM	IRRIGATION QUANTITIES				TOTAL
	1	2	3	4	
1804-8H	4	20	1	-	25
1812-8H	20	31	3	8	62
1804-8HV	-	-	2	3	5
1804-10H	9	-	-	-	9
1812-10H	9	-	3	7	19
1804-12H	9	-	-	-	9
1812-12H	24	-	5	7	36
1804-12HV	-	-	-	1	1
1812-12HV	-	-	1	1	2
1812-15H	-	-	8	10	18
1804-15SST	4	2	-	2	8
1812-15SST	-	2	-	-	2
1804-15CST	6	9	1	13	29
1804-15EST	2	2	1	1	6
1" VALVE	4	3	2	3	12
1" PE PIPE	885	780	260	565	2490
1-1/4" PE PIPE	400	205	50	325	980

