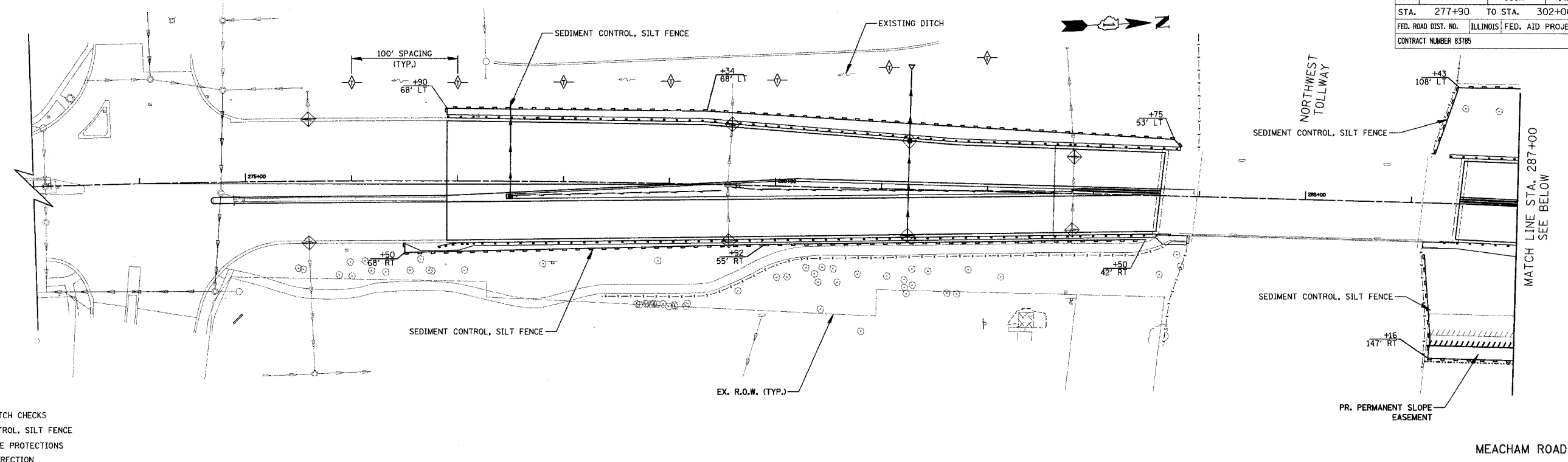
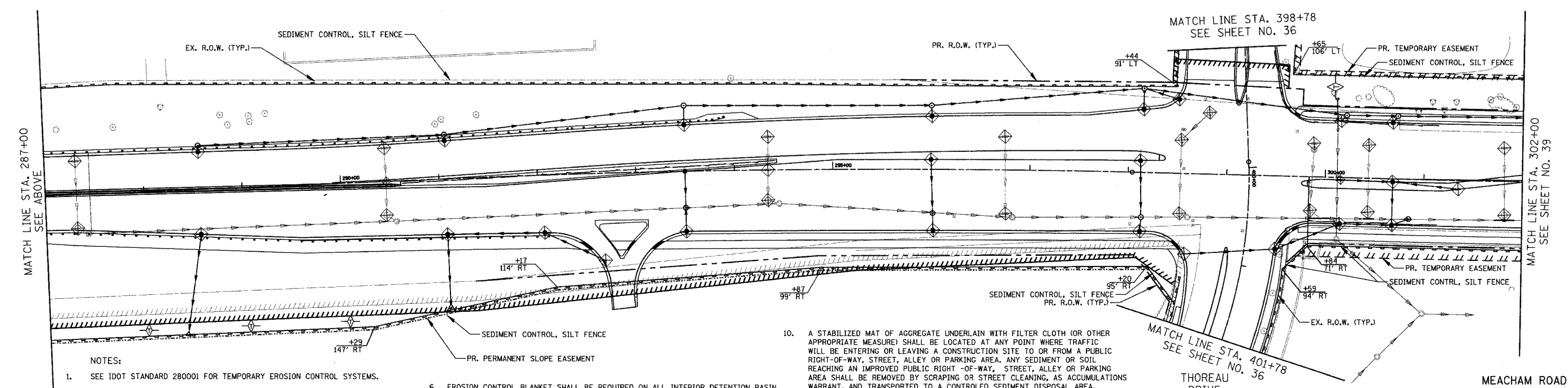


F.A.U. RTE.	SECTION	COUNTY	TOTAL SHEETS	SHEET NO.
2585 100-00068-01-WR	COOK	145	38	
STA. 277+90	TO STA. 302+00			
FED. ROAD DIST. NO.	ILLINOIS FED. AID PROJECT			
CONTRACT NUMBER 83785				



- LEGEND**
- ◇ TEMPORARY DITCH CHECKS
  - INLET AND PIPE PROTECTIONS
  - DITCH FLOW DIRECTION
  - SEDIMENT CONTROL, SILT FENCE

SOUTH MOTOROLA ENTRANCE



- NOTES:**
1. SEE IDOT STANDARD 280001 FOR TEMPORARY EROSION CONTROL SYSTEMS.
  2. SOIL DISTURBANCE SHALL BE CONDUCTED IN SUCH A MANNER AS TO MINIMIZE EROSION. SOIL STABILIZATION MEASURES SHALL CONSIDER THE TIME OF YEAR, SITE CONDITIONS AND THE USE OF TEMPORARY OR PERMANENT MEASURES.
  3. SOIL EROSION AND SEDIMENT CONTROL FEATURES SHALL BE CONSTRUCTED PRIOR TO THE COMMENCEMENT OF HYDROLOGIC DISTURBANCE OF UPLAND AREAS.
  4. DISTURBED AREAS SHALL BE STABILIZED WITHIN 14 CALENDAR DAYS OF THE END OF ACTIVE HYDROLOGIC DISTURBANCE OR RE-DISTURBANCE.
  5. AREAS OR EMBANKMENTS HAVING SLOPES GREATER THAN OR EQUAL TO 3H:1V SHALL BE STABILIZED WITH SOD, MAT OR BLANKET IN COMBINATION WITH SEEDING.
  6. EROSION CONTROL BLANKET SHALL BE REQUIRED ON ALL INTERIOR DETENTION BASIN SIDE SLOPES BETWEEN NORMAL WATER LEVEL AND HIGH WATER LEVEL.
  7. ALL STORM SEWERS THAT ARE OR WILL BE FUNCTIONING DURING CONSTRUCTION SHALL BE PROTECTED BY AN APPROPRIATE SEDIMENT CONTROL MEASURE.
  8. ALL TEMPORARY EROSION AND SEDIMENT CONTROL MEASURES SHALL BE REMOVED WITHIN 30 DAYS AFTER FINAL SITE STABILIZATION IS ACHIEVED, OR AFTER THE TEMPORARY MEASURES ARE NO LONGER NEEDED.
  9. ALL TEMPORARY AND PERMANENT EROSION CONTROL MEASURES MUST BE MAINTAINED AND REPAIRED AS NEEDED. THE PROPERTY OWNER SHALL BE ULTIMATELY RESPONSIBLE FOR MAINTENANCE AND REPAIR.

10. A STABILIZED MAT OF AGGREGATE UNDERLAIN WITH FILTER CLOTH (OR OTHER APPROPRIATE MEASURE) SHALL BE LOCATED AT ANY POINT WHERE TRAFFIC WILL BE ENTERING OR LEAVING A CONSTRUCTION SITE TO OR FROM A PUBLIC RIGHT-OF-WAY, STREET, ALLEY OR PARKING AREA. ANY SEDIMENT OR SOIL REACHING AN IMPROVED PUBLIC RIGHT-OF-WAY, STREET, ALLEY OR PARKING AREA SHALL BE REMOVED BY SCRAPING OR STREET CLEANING, AS ACCUMULATIONS WARRANT, AND TRANSPORTED TO A CONTROLLED SEDIMENT DISPOSAL AREA.
11. SOIL STOCKPILES SHALL NOT BE LOCATED IN A FLOOD-PRONE AREA OR A DESIGNATED BUFFER PROTECTING WATERS OF THE UNITED STATES.
12. IF DEWATERING SERVICES ARE USED, ADJOINING PROPERTIES AND DISCHARGE LOCATIONS SHALL BE PROTECTED FROM EROSION. DISCHARGES SHALL BE ROUTED THROUGH AND EFFECTIVE SEDIMENT CONTROL MEASURE (E.G., SEDIMENT TRAP, SEDIMENT BASIN, OR OTHER APPROPRIATE MEASURE).
13. THE EROSION CONTROL MEASURES INDICATED ON THE PLANS ARE THE MINIMUM REQUIREMENTS. ADDITIONAL MEASURES MAY BE REQUIRED, AS DIRECTED BY THE ENGINEER OR GOVERNING AGENCY.

REVISIONS	
NAME	DATE

ILLINOIS DEPARTMENT OF TRANSPORTATION

MEACHAM ROAD  
SEDIMENT AND EROSION CONTROL PLANS

STATION 274+70 TO STATION 302+00

SCALE IN FEET  
0 50 50

DESIGNED BY KRY  
CHECKED BY RRM

DATE 12/20/04