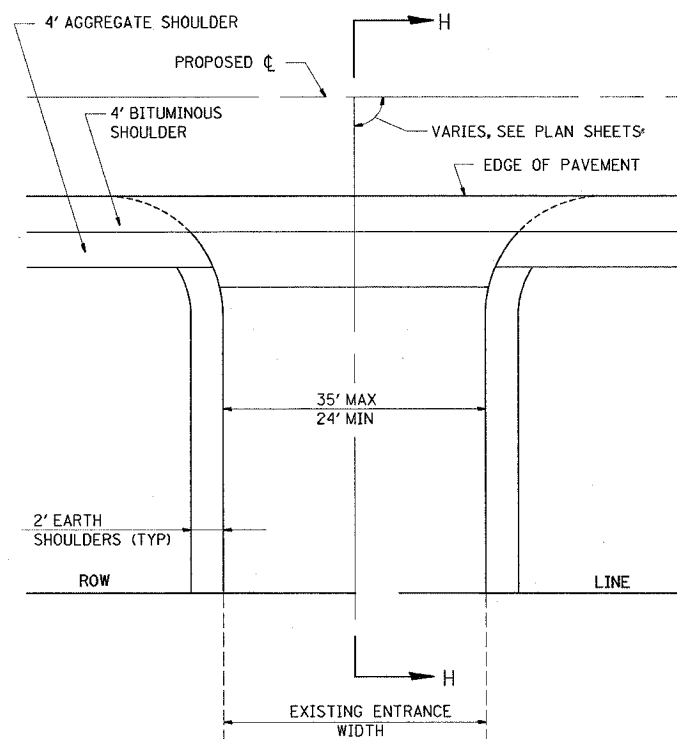
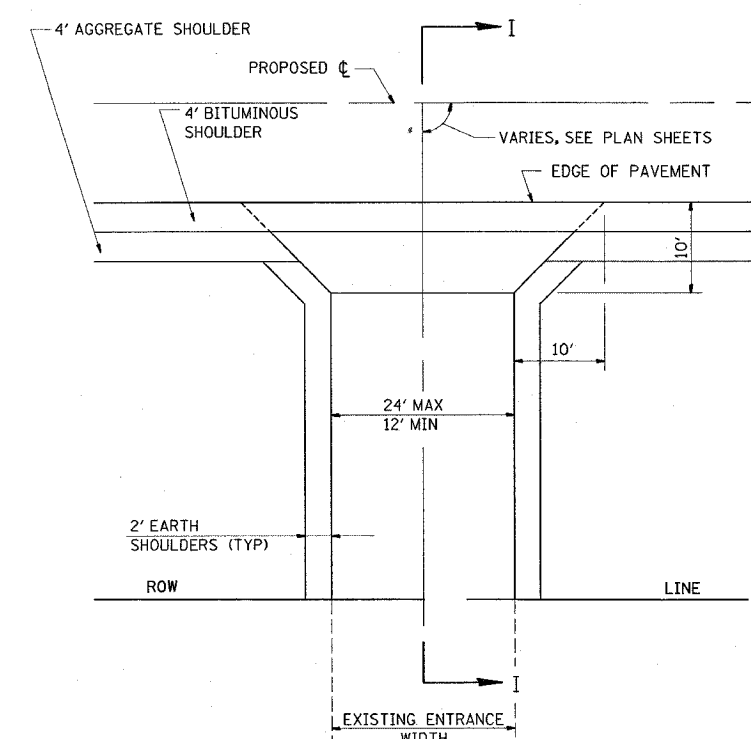


FAP ROUTE	SECTION	COUNTY	TOTAL SHEETS	SHEET NO
586	60R-2, 37R-1	MADISON	502	249
STA.	TO STA.			
CONTRACT #76301				

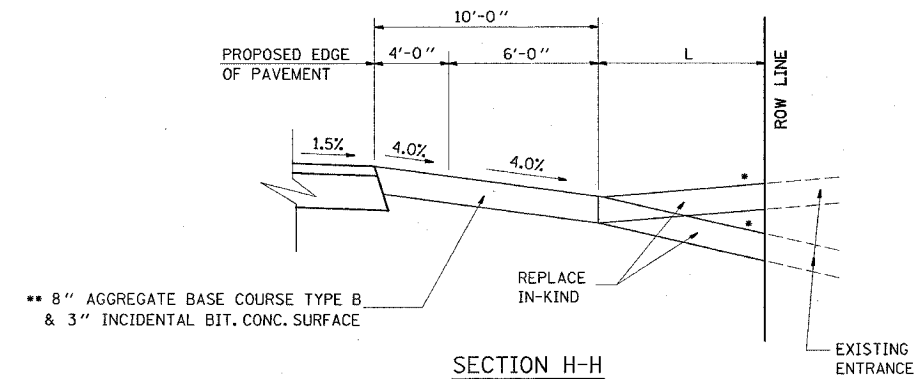
DATE	
BY	
DESIGNED	
CHECKED	
IN CHARGE	
DATE	
BY	
DESIGNED	
CHECKED	
IN CHARGE	



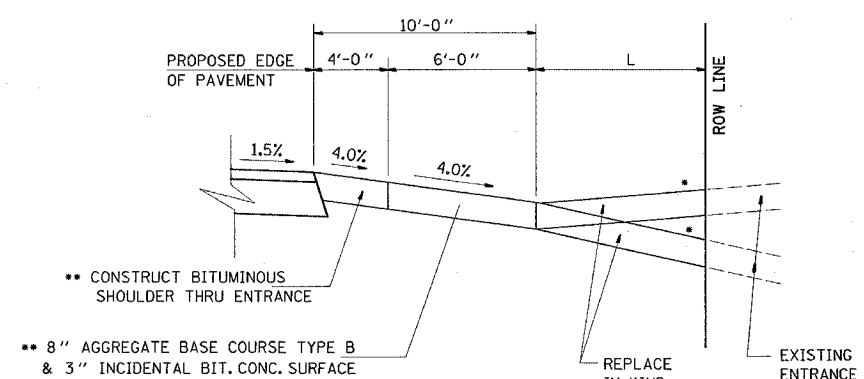
**SR CE DETAIL H**  
 COMMERCIAL & SIDE ROAD ENTRANCE  
 ADJACENT TO COMBINATION BITUMINOUS  
 AND AGGREGATE SHOULDERS



**PE & FE DETAIL I**  
 PRIVATE AND FIELD ENTRANCE  
 ADJACENT TO COMBINATION BITUMINOUS  
 AND AGGREGATE SHOULDERS



**SECTION H-H**  
 • SEE CROSS SECTIONS FOR SLOPE  
 •• OMIT AT CONCRETE ENTRANCES  
 SEE PLANS FOR EXISTING SURFACE TYPE



**SECTION I-I**  
 • SEE CROSS SECTIONS FOR SLOPE  
 •• OMIT AT CONCRETE ENTRANCES  
 SEE PLANS FOR EXISTING SURFACE TYPE

TYPE OF ENTRANCE	EXISTING MATERIAL	NEW ENTRANCE MATERIAL (BEYOND RADIUS RETURNS OR TAPERS)				
		PCC DRIVEWAY PAVEMENT (6")	PCC DRIVEWAY PAVEMENT (8")	INCIDENTAL BITUMINOUS CONC SURFACING (3")	AGGREGATE BASE COURSE TYPE B (8")	AGGREGATE SURFACE COURSE TYPE B (6")
PE & FE	CONCRETE	X				
	BITUMINOUS			X	X	
	AGGREGATE					X
CE & SR	CONCRETE		X			
	BITUMINOUS			X	X	
	AGGREGATE				X	

REVISIONS	
NAME	DATE

ILLINOIS DEPARTMENT OF TRANSPORTATION  
**ENTRANCE DETAILS**  
 FAP ROUTE 586  
 SECTION 60R-2, 37R-1  
 MADISON COUNTY  
 DRAWN BY: