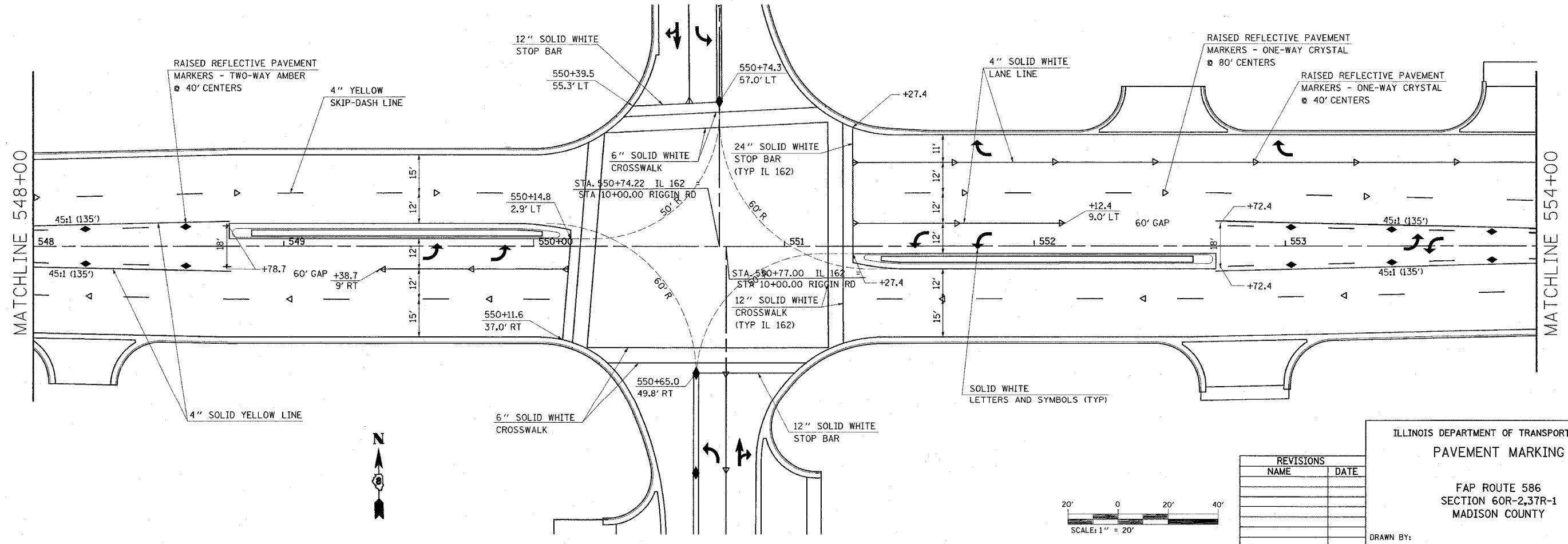
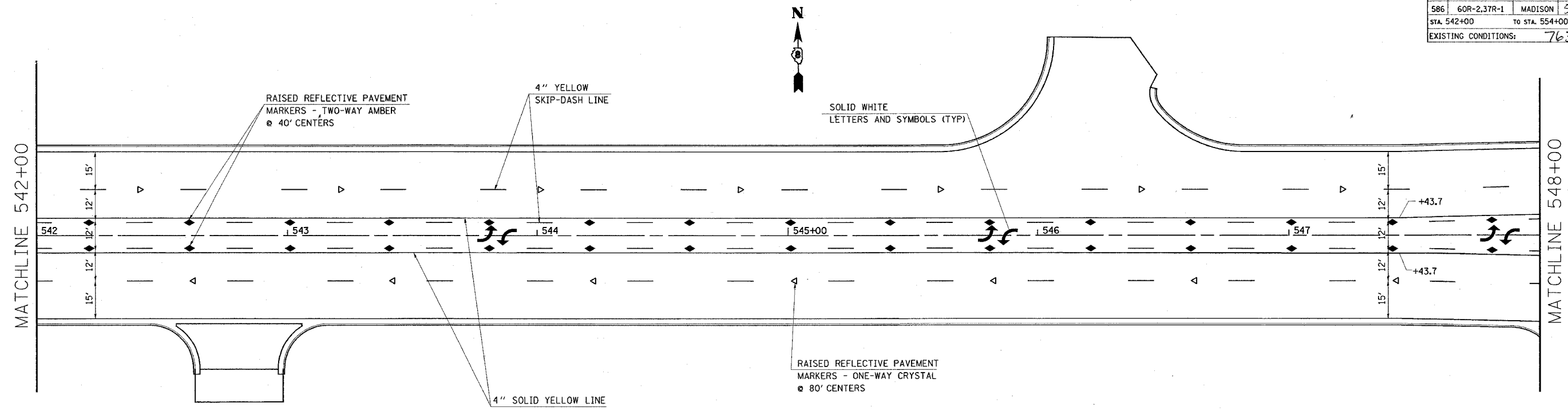
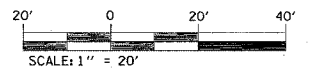


FAP ROUTE	SECTION	COUNTY	TOTAL SHEETS	SHEET NO
586	60R-2,37R-1	MADISON	502	218
STA. 542+00		TO STA. 554+00		
EXISTING CONDITIONS:				76301

PLAN	SURVEYED	DATE
NOTE BOOK	PLOTTED	
NO.	BY	
	DATE	
	NO. OF WAY CHECKED	
	CADD FILE NAME	



7/2/2004 9:38:53 AM
 C:\p0\projects\60R-2,37R-1\plan\pavmark.dgn LV1:28.30-11.43-63
 C:\p0\projects\60R-2,37R-1\plan\pavmark.dgn LV2:7.92024.29.38
 C:\p0\projects\60R-2,37R-1\plan\pavmark.dgn LV3:2.52024.29.38
 C:\p0\projects\60R-2,37R-1\plan\pavmark.dgn LV4:2.52024.29.38
 C:\p0\projects\60R-2,37R-1\plan\pavmark.dgn LV5:2.52024.29.38
 C:\p0\projects\60R-2,37R-1\plan\pavmark.dgn LV6:2.52024.29.38
 C:\p0\projects\60R-2,37R-1\plan\pavmark.dgn LV7:2.52024.29.38
 C:\p0\projects\60R-2,37R-1\plan\pavmark.dgn LV8:2.52024.29.38
 C:\p0\projects\60R-2,37R-1\plan\pavmark.dgn LV9:2.52024.29.38
 C:\p0\projects\60R-2,37R-1\plan\pavmark.dgn LV10:2.52024.29.38



REVISIONS	
NAME	DATE

ILLINOIS DEPARTMENT OF TRANSPORTATION
PAVEMENT MARKING

FAP ROUTE 586
SECTION 60R-2,37R-1
MADISON COUNTY

DRAWN BY: _____

PLOT DATE: Friday July 02, 2004 @ 9:38:53 AM