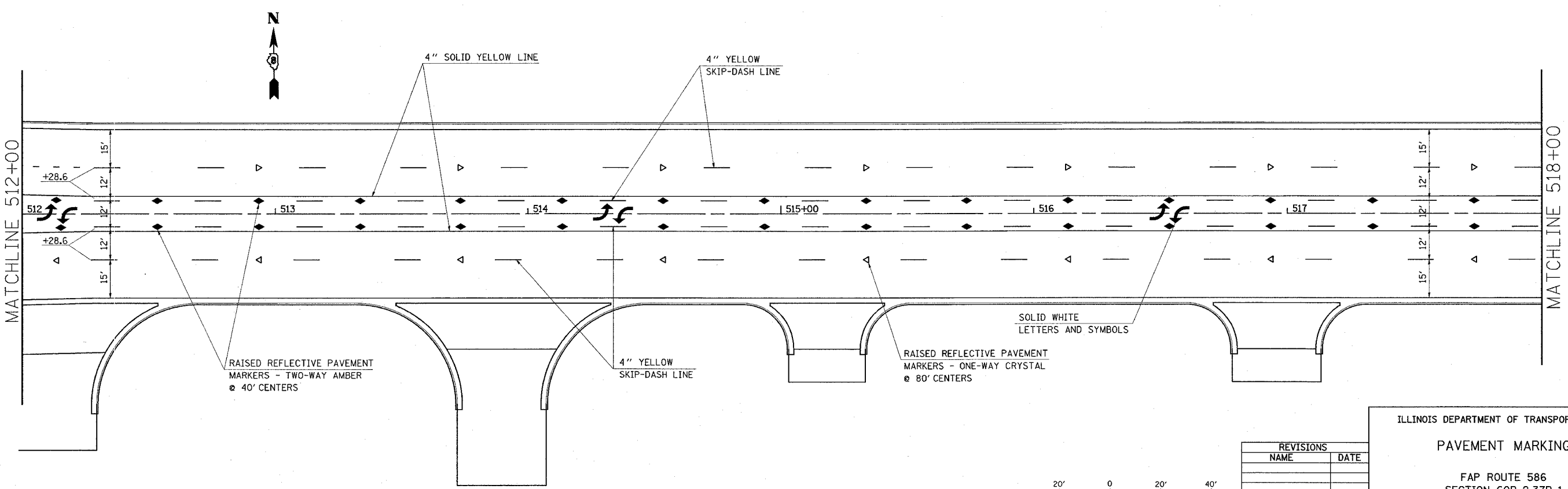
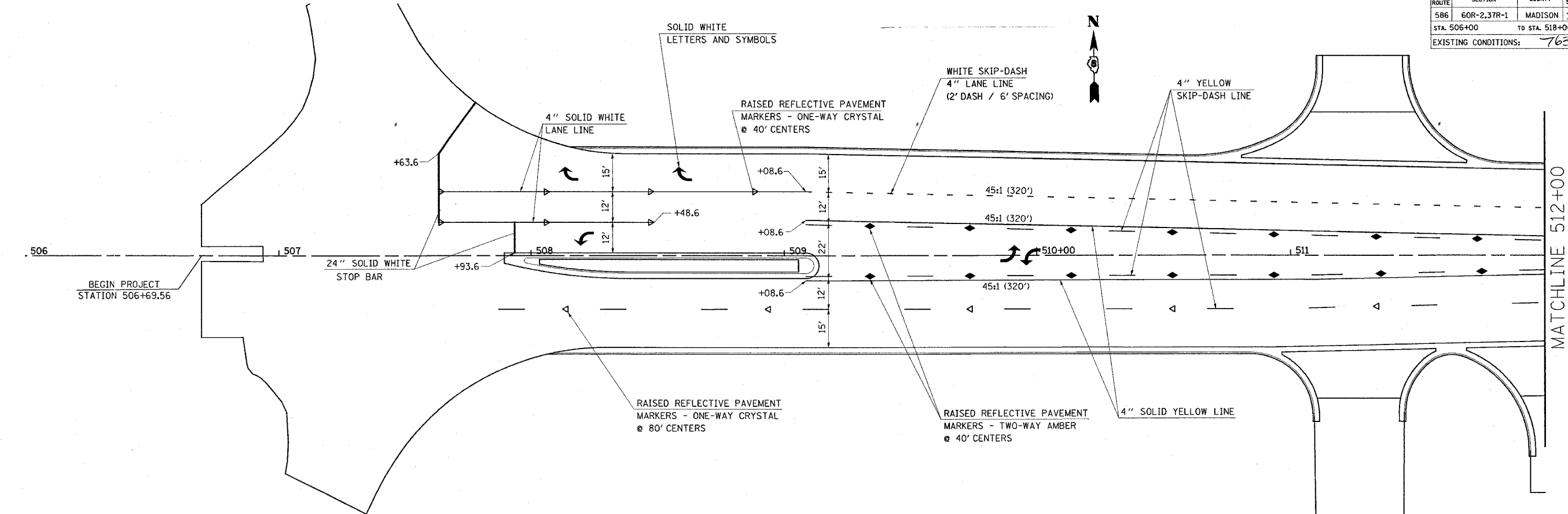
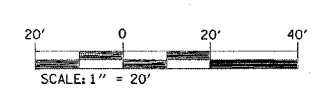


FAP ROUTE	SECTION	COUNTY	TOTAL SHEETS	SHEET NO.
586	60R-2,37R-1	MADISON	502	215
STA. 506+00 TO STA. 518+00			EXISTING CONDITIONS: 76301	



PLAN	SURVEYED	DATE
NOTE BOOK	PLotted	
	RT. OF WAY CHECKED	
	PAID FILE NAME	

7/2/2004
 Friday, July 02, 2004 @ 9:38:54 AM
 C:\projects\60R-2,37R-1\plan\pavmark02.dgn LV1:26:38-1:43:53
 C:\projects\60R-2,37R-1\plan\pavmark03.dgn LV2:27:20:29-29:38:56
 C:\projects\60R-2,37R-1\plan\pavmark04.dgn LV3:27:20:29-29:38:56
 C:\projects\60R-2,37R-1\plan\pavmark05.dgn LV4:27:20:29-29:38:56
 C:\projects\60R-2,37R-1\plan\pavmark06.dgn LV5:27:20:29-29:38:56
 C:\projects\60R-2,37R-1\plan\pavmark07.dgn LV6:27:20:29-29:38:56
 C:\projects\60R-2,37R-1\plan\pavmark08.dgn LV7:27:20:29-29:38:56
 C:\projects\60R-2,37R-1\plan\pavmark09.dgn LV8:27:20:29-29:38:56
 C:\projects\60R-2,37R-1\plan\pavmark10.dgn LV9:27:20:29-29:38:56
 C:\projects\60R-2,37R-1\plan\pavmark11.dgn LV10:27:20:29-29:38:56



REVISIONS	
NAME	DATE

ILLINOIS DEPARTMENT OF TRANSPORTATION

PAVEMENT MARKING

FAP ROUTE 586
 SECTION 60R-2,37R-1
 MADISON COUNTY

DRAWN BY:

PLOT DATE: Friday July 02, 2004 @ 9:38:54 AM