

PART OF THE NW 1/4 OF SECTION 9, T3N, R7W, OF THE 3RD PM, MADISON COUNTY, ILLINOIS

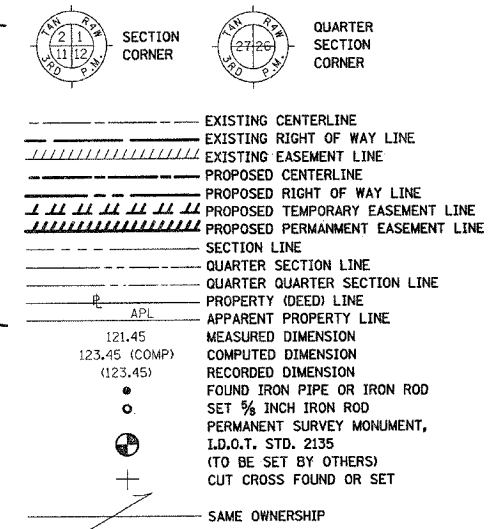
BEARINGS SHOWN HEREON ARE BASED ON SURVEY CONTROL DATA AS PROVIDED BY THE ILLINOIS DEPARTMENT OF TRANSPORTATION.

Sheet 188 of 502  
Contract No. 76301

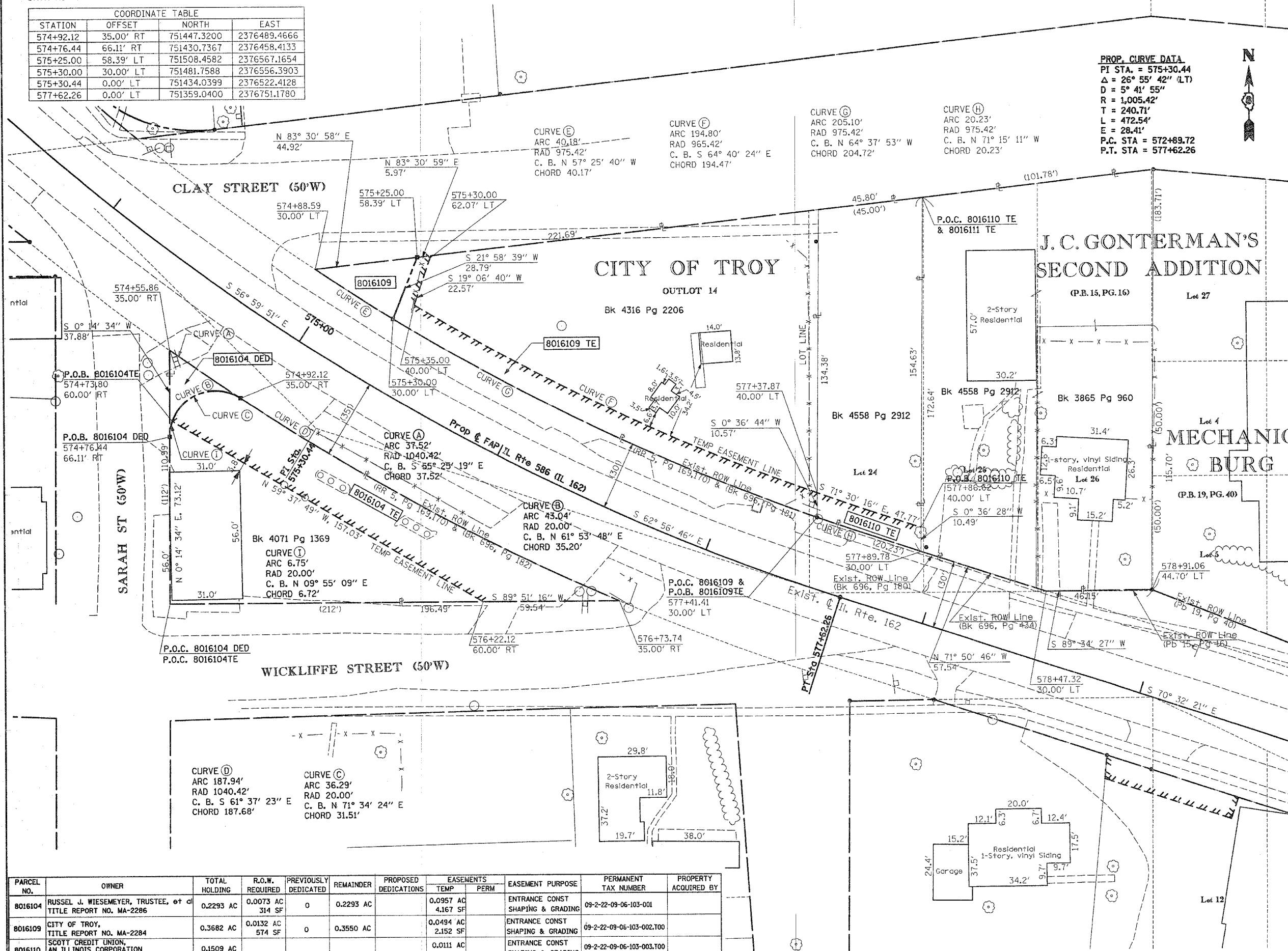
COORDINATES SHOWN HEREON ARE BASED ON SURVEY CONTROL DATA AS PROVIDED BY THE ILLINOIS DEPARTMENT OF TRANSPORTATION.

| COORDINATE TABLE |           |             |              |
|------------------|-----------|-------------|--------------|
| STATION          | OFFSET    | NORTH       | EAST         |
| 574+92.12        | 35.00' RT | 751447.3200 | 2376489.4666 |
| 574+76.44        | 66.11' RT | 751430.7367 | 2376458.4133 |
| 575+25.00        | 58.39' LT | 751508.4582 | 2376567.1654 |
| 575+30.00        | 30.00' LT | 751481.7588 | 2376556.3903 |
| 575+30.44        | 0.00' LT  | 751434.0399 | 2376522.4128 |
| 577+62.26        | 0.00' LT  | 751359.0400 | 2376751.1780 |

LEGEND



**PROP. CURVE DATA**  
 PI STA. = 575+30.44  
 Δ = 26° 55' 42" (LT)  
 D = 5° 41' 55"  
 R = 1,005.42'  
 T = 240.71'  
 L = 472.54'  
 E = 28.41'  
 P.C. STA = 572+89.72  
 P.T. STA = 577+62.26



STATE OF ILLINOIS )  
 COUNTY OF ) SS

THIS IS TO CERTIFY THAT I, THOMAS M. DRONE, AN ILLINOIS PROFESSIONAL LAND SURVEYOR, HAS SURVEYED THE PLAT OF HIGHWAYS SHOWN HEREON IN SECTION 8, TOWNSHIP 3 NORTH, RANGE 7 WEST, OF THE THIRD PRINCIPAL MERIDIAN, MADISON COUNTY, THAT THE SURVEY IS TRUE AND COMPLETE AS SHOWN TO THE BEST OF MY KNOWLEDGE AND BELIEF, THAT THE PLAT CORRECTLY REPRESENTS SAID SURVEY, THAT ALL MONUMENTS FOUND AND ESTABLISHED ARE OF PERMANENT QUALITY AND OCCUPY THE POSITIONS SHOWN THEREON AND THAT THE MONUMENTS ARE SUFFICIENT TO ENABLE THE SURVEY TO BE RETRACED. MADE FOR THE DEPARTMENT OF TRANSPORTATION, STATE OF ILLINOIS.

DATED \_\_\_\_\_

THOMAS M. DRONE, PLS #2273

RECEIVED  
 DEC 06 2004  
 F&P PLANS

Hurst-Rosche Engineers, Inc.  
 2657 W. Lawrence  
 Springfield, IL 62704  
 217-787-1199

ILLINOIS DEPARTMENT OF TRANSPORTATION  
**PLAT OF HIGHWAYS**  
 FAP ROUTE 586 (IL 162)  
 SECTION 60R-2  
 MADISON COUNTY  
 JOB NO. R-98-016-00  
 STATION 574+00 TO STATION 579+00  
 SCALE: 1" = 20'

ILLINOIS DEPARTMENT OF TRANSPORTATION  
 DIVISION OF HIGHWAYS/DISTRICT 8  
 1102 EASTPORT PLAZA DRIVE  
 COLLINGSVILLE, ILLINOIS 62234-6198

| PARCEL NO. | OWNER  | TOTAL HOLDING | R.O.W. REQUIRED     | PREVIOUSLY DEDICATED | REMAINDER | PROPOSED DEDICATIONS | EASEMENTS             |      | EASEMENT PURPOSE                 | PERMANENT TAX NUMBER      | PROPERTY ACQUIRED BY |
|------------|--|---------------|---------------------|----------------------|-----------|----------------------|-----------------------|------|----------------------------------|---------------------------|----------------------|
|            |  |               |                     |                      |           |                      | TEMP                  | PERM |                                  |                           |                      |
| 8016104    | RUSSEL J. WIESEMEYER, TRUSTEE, et al<br>TITLE REPORT NO. MA-2286           | 0.2293 AC     | 0.0073 AC<br>314 SF | 0                    | 0.2293 AC |                      | 0.0957 AC<br>4,167 SF |      | ENTRANCE CONST SHAPING & GRADING | 09-2-22-09-06-103-001     |                      |
| 8016109    | CITY OF TROY,<br>TITLE REPORT NO. MA-2284                                  | 0.3682 AC     | 0.0132 AC<br>574 SF | 0                    | 0.3550 AC |                      | 0.0494 AC<br>2,152 SF |      | ENTRANCE CONST SHAPING & GRADING | 09-2-22-09-06-103-002.000 |                      |
| 8016110    | SCOTT CREDIT UNION,<br>AN ILLINOIS CORPORATION<br>TITLE REPORT NO. MA-2303 | 0.1509 AC     |                     |                      |           |                      | 0.0111 AC<br>482 SF   |      | ENTRANCE CONST SHAPING & GRADING | 09-2-22-09-06-103-003.000 |                      |

DATE-TIME