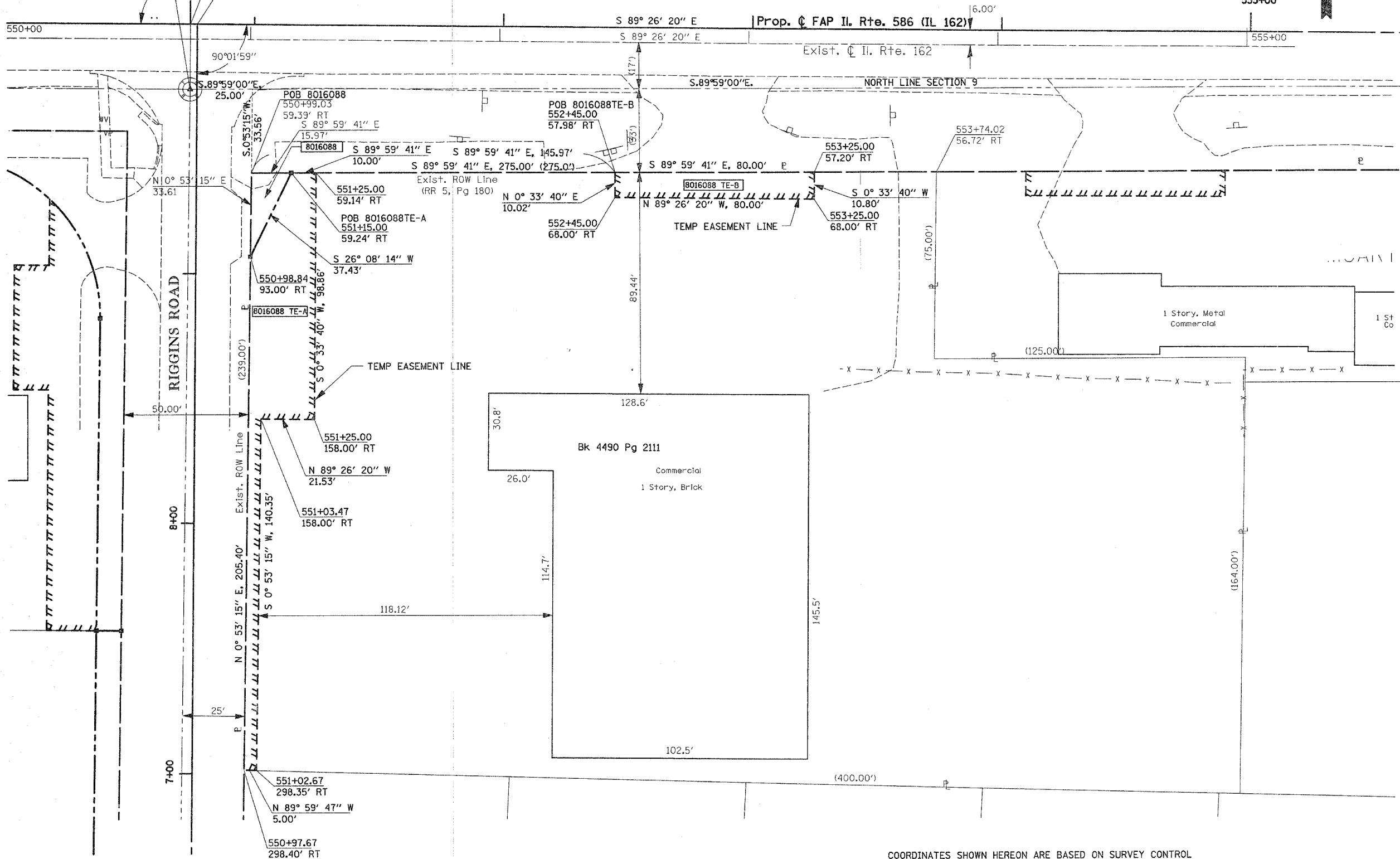
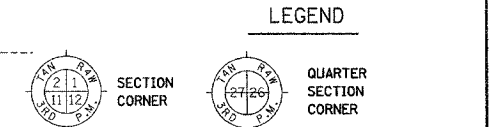


POINT OF COMMENCEMENT
NW CORNER, NW 1/4 SECTION 9
550+74.22 26.07' RT.
8016085, 8016085 TE,
8016086, 8016086 TE,
8016087, 8016087 TE,
8016088, 8016088 TE-A,
8016088 TE-B, 8016092,
8016092 TE, 8016093 TE
& 8016098

PART OF THE NW 1/4 OF SECTION 9, T3N, R7W, OF THE 3RD PM, MADISON COUNTY, ILLINOIS

BEARINGS SHOWN HEREON ARE BASED ON SURVEY
CONTROL DATA AS PROVIDED BY THE ILLINOIS
DEPARTMENT OF TRANSPORTATION.

Sheet 181 of 502
Contract No. 76301



STATE OF ILLINOIS)
) SS
COUNTY OF)

THIS IS TO CERTIFY THAT I, THOMAS M. DRONE, AN ILLINOIS PROFESSIONAL LAND SURVEYOR, HAS SURVEYED THE PLAT OF HIGHWAYS SHOWN HEREON IN SECTION 8, TOWNSHIP 3 NORTH, RANGE 7 WEST, OF THE THIRD PRINCIPAL MERIDIAN, MADISON COUNTY, THAT THE SURVEY IS TRUE AND COMPLETE AS SHOWN TO THE BEST OF MY KNOWLEDGE AND BELIEF, THAT THE PLAT CORRECTLY REPRESENTS SAID SURVEY, THAT ALL MONUMENTS FOUND AND ESTABLISHED ARE OF PERMANENT QUALITY AND OCCUPY THE POSITIONS SHOWN THEREON AND THAT THE MONUMENTS ARE SUFFICIENT TO ENABLE THE SURVEY TO BE RETRACED. MADE FOR THE DEPARTMENT OF TRANSPORTATION, STATE OF ILLINOIS.

DATED _____

THOMAS M. DRONE, PLS #2273

RECEIVED
DEC 06 2004
PLATS & PLANS

Hurst-Rosche Engineers, Inc.
2657 W. Lawrence
Springfield, IL 62704
217-787-1199

ILLINOIS DEPARTMENT OF TRANSPORTATION
PLAT OF HIGHWAYS
FAP ROUTE 586 (IL 162)
SECTION 60R-2
MADISON COUNTY
JOB NO. R-98-016-00
STATION 551+00 TO STATION 555+00

SCALE: 1" = 20'

ILLINOIS DEPARTMENT OF TRANSPORTATION
DIVISION OF HIGHWAYS/DISTRICT 8
1102 EASTPORT PLAZA DRIVE
COLLINGSVILLE, ILLINOIS 62234-6188

SHEET 17 OF 26

COORDINATES SHOWN HEREON ARE BASED ON SURVEY CONTROL DATA AS PROVIDED BY THE ILLINOIS DEPARTMENT OF TRANSPORTATION.

STATION	OFFSET	COORDINATE TABLE	
		NORTH	EAST
551+15.00	59.24' RT	752205.2182	2374400.9071
550+98.84	93.00' RT	752171.6149	2374384.4180
550+74.22	26.07' RT	752238.7784	2374360.4550

PARCEL NO.	OWNER	TOTAL HOLDING	R.O.W. REQUIRED	PREVIOUSLY DEDICATED	REMAINDER	EASEMENTS		EASEMENT PURPOSE	PERMANENT TAX NUMBER	PROPERTY ACQUIRED BY
						TEMP	PERM			
8016088	RALPH S. JAMESON, JR. TITLE REPORT NO. MA-2263	1.9793 AC	0.0062 AC 268 SF	0	1.9731 AC	A=0.0694 AC 3025 SF B=0.0191 AC 833 SF		ENTRANCE CONST. SHAPING & GRADING	09-1-22-09-05-101-001.700	

PLOT DATE: 12/22/04 8:41:32 AM