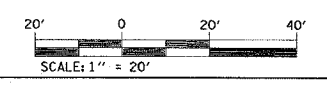
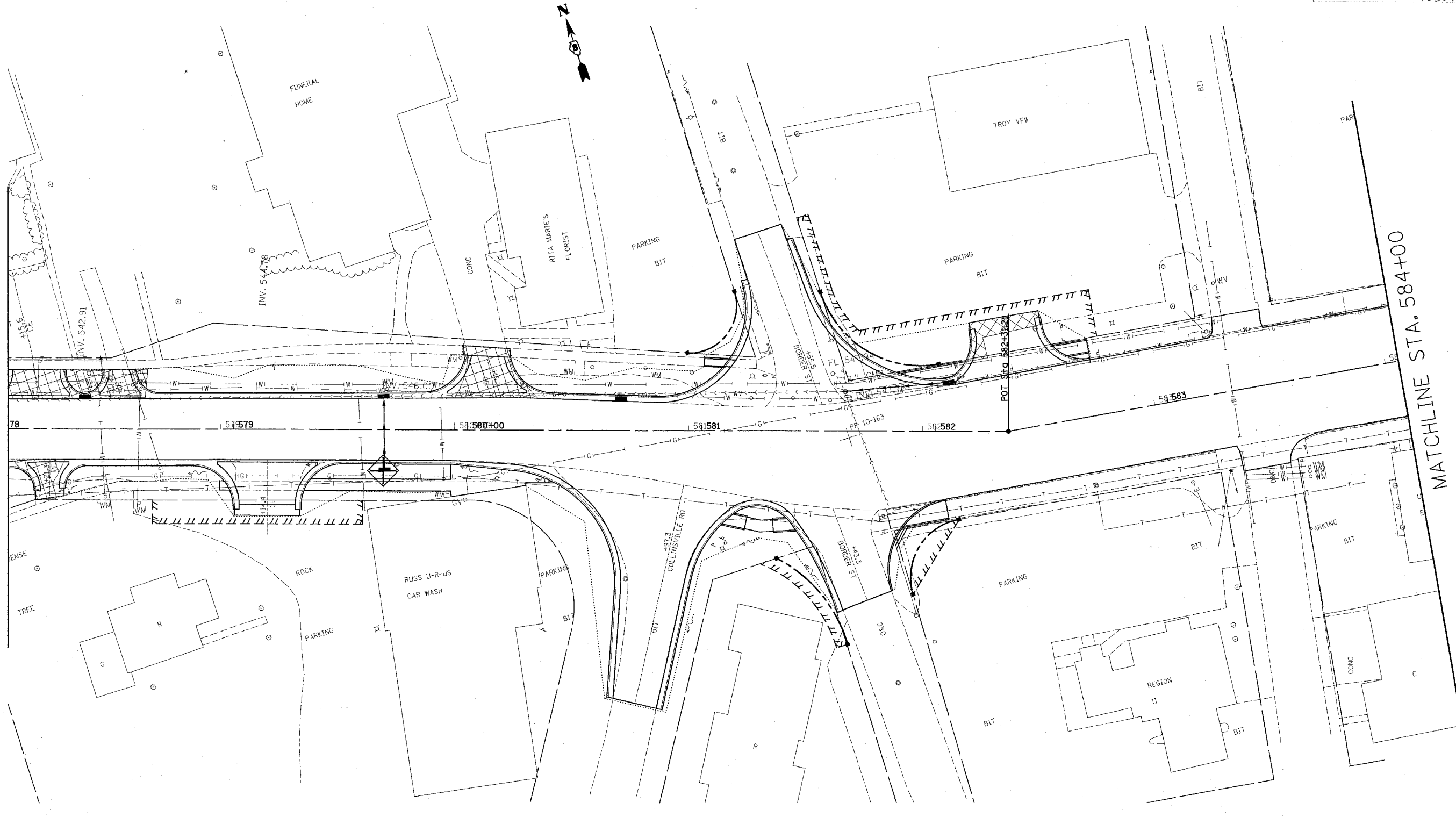


FAP ROUTE	SECTION	COUNTY	TOTAL SHEETS	SHEET NO
586	60R-2, 37R-1	MADISON	502	144
STA. 578+00		TO STA. 584+00		
EXISTING CONDITIONS:		76301		

PLAN	DATE	BY
NOTED		
FILED		
RT. OF WAY CHECKED		
NO.		

MATCHLINE STA. 578+00

MATCHLINE STA. 584+00



REVISIONS	
NAME	DATE

ILLINOIS DEPARTMENT OF TRANSPORTATION
STORM WATER POLLUTION PREVENTION PLAN
 FAP ROUTE 586
 SECTION 60R-2, 37R-1
 MADISON COUNTY
 DRAWN BY:

7/2/2004
 Friday, July 02, 2004 @ 8:30:57 AM
 C:\projects\ed\586\plan\plan\144.dwg LV:91-63
 C:\projects\ed\586\plan\plan\144.dwg LV:91-63
 C:\projects\ed\586\plan\plan\144.dwg LV:91-63
 C:\projects\ed\586\plan\plan\144.dwg LV:91-63
 C:\projects\ed\586\plan\plan\144.dwg LV:91-63
 C:\projects\ed\586\plan\plan\144.dwg LV:91-63
 C:\projects\ed\586\plan\plan\144.dwg LV:91-63
 C:\projects\ed\586\plan\plan\144.dwg LV:91-63
 C:\projects\ed\586\plan\plan\144.dwg LV:91-63
 C:\projects\ed\586\plan\plan\144.dwg LV:91-63