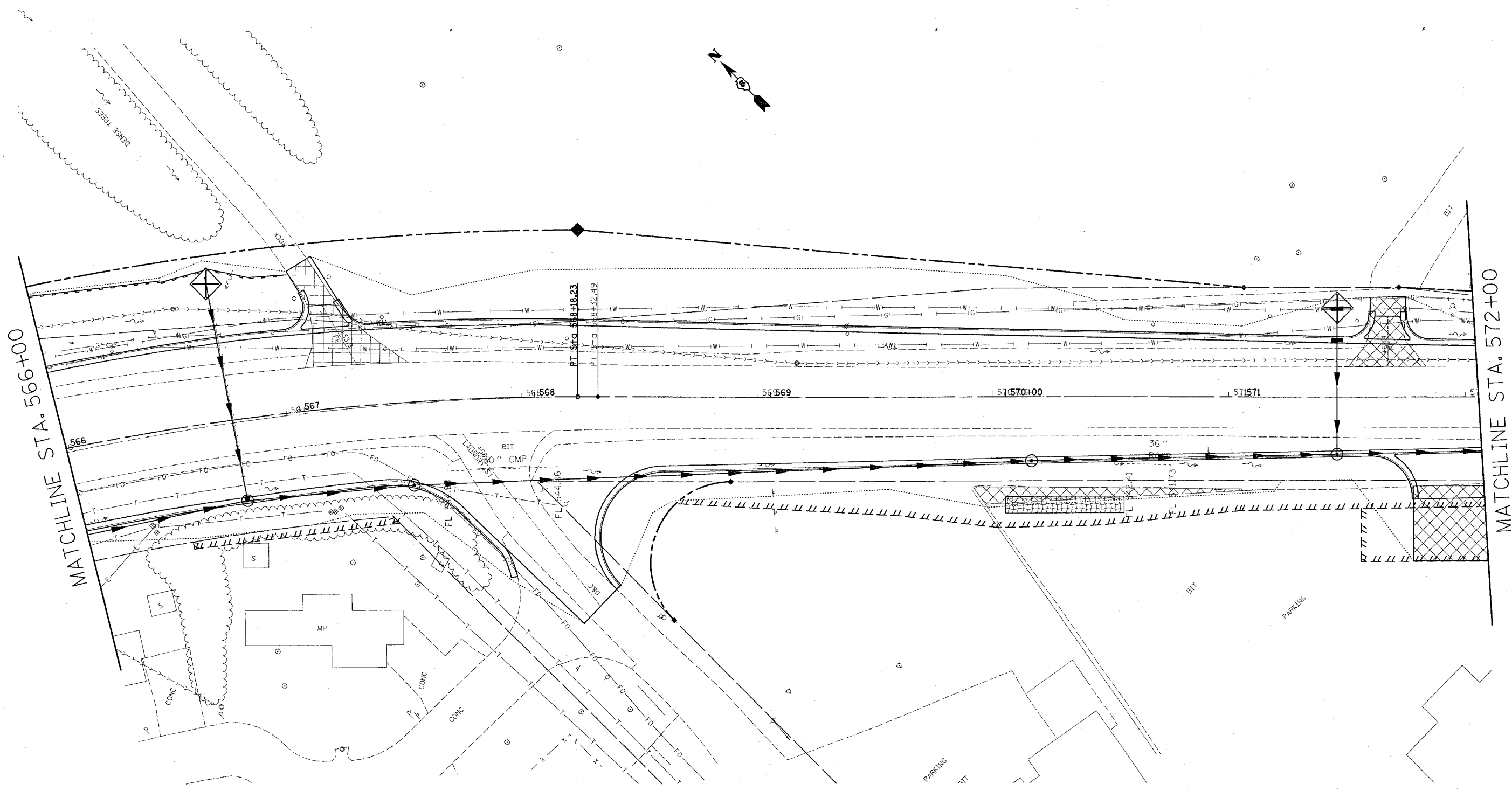
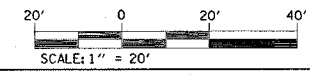


FAP ROUTE	SECTION	COUNTY	TOTAL SHEETS	SHEET NO.
586	60R-2, 37R-1	MADISON	502	142
STA. 566+00		TO STA. 572+00		
EXISTING CONDITIONS:		76301		

PLAN	DATE	BY
SURVEYED		
PLOTTED		
NOTED		
CHECKED		
DATE		



7/2/2004
 Friday, July 02, 2004 @ 8:30:57 AM
 C:\projects\586\586.dgn LV:4-53
 C:\projects\586\586.dgn LV:26-27, 46-47, 50-52, 53
 C:\projects\586\586.dgn LV:28-29, 30-31, 32-33, 34-35, 36-37, 38-39, 40-41, 42-43, 44-45, 46-47, 48-49, 50-51, 52-53, 54-55, 56-57, 58-59
 C:\projects\586\586.dgn LV:2-3, 4-5, 6-7, 8-9, 10-11, 12-13, 14-15, 16-17, 18-19, 20-21, 22-23, 24-25, 26-27, 28-29, 30-31, 32-33, 34-35, 36-37, 38-39, 40-41, 42-43, 44-45, 46-47, 48-49, 50-51, 52-53, 54-55, 56-57, 58-59
 C:\projects\586\586.dgn LV:22-23
 C:\projects\586\586.dgn LV:2-3, 4-5, 6-7, 8-9, 10-11, 12-13, 14-15, 16-17, 18-19, 20-21, 22-23, 24-25, 26-27, 28-29, 30-31, 32-33, 34-35, 36-37, 38-39, 40-41, 42-43, 44-45, 46-47, 48-49, 50-51, 52-53, 54-55, 56-57, 58-59



REVISIONS	
NAME	DATE

ILLINOIS DEPARTMENT OF TRANSPORTATION
STORM WATER POLLUTION PREVENTION PLAN
 FAP ROUTE 586
 SECTION 60R-2, 37R-1
 MADISON COUNTY
 DRAWN BY:

PLOT DATE: Friday, July 02, 2004 @ 8:30:57 AM