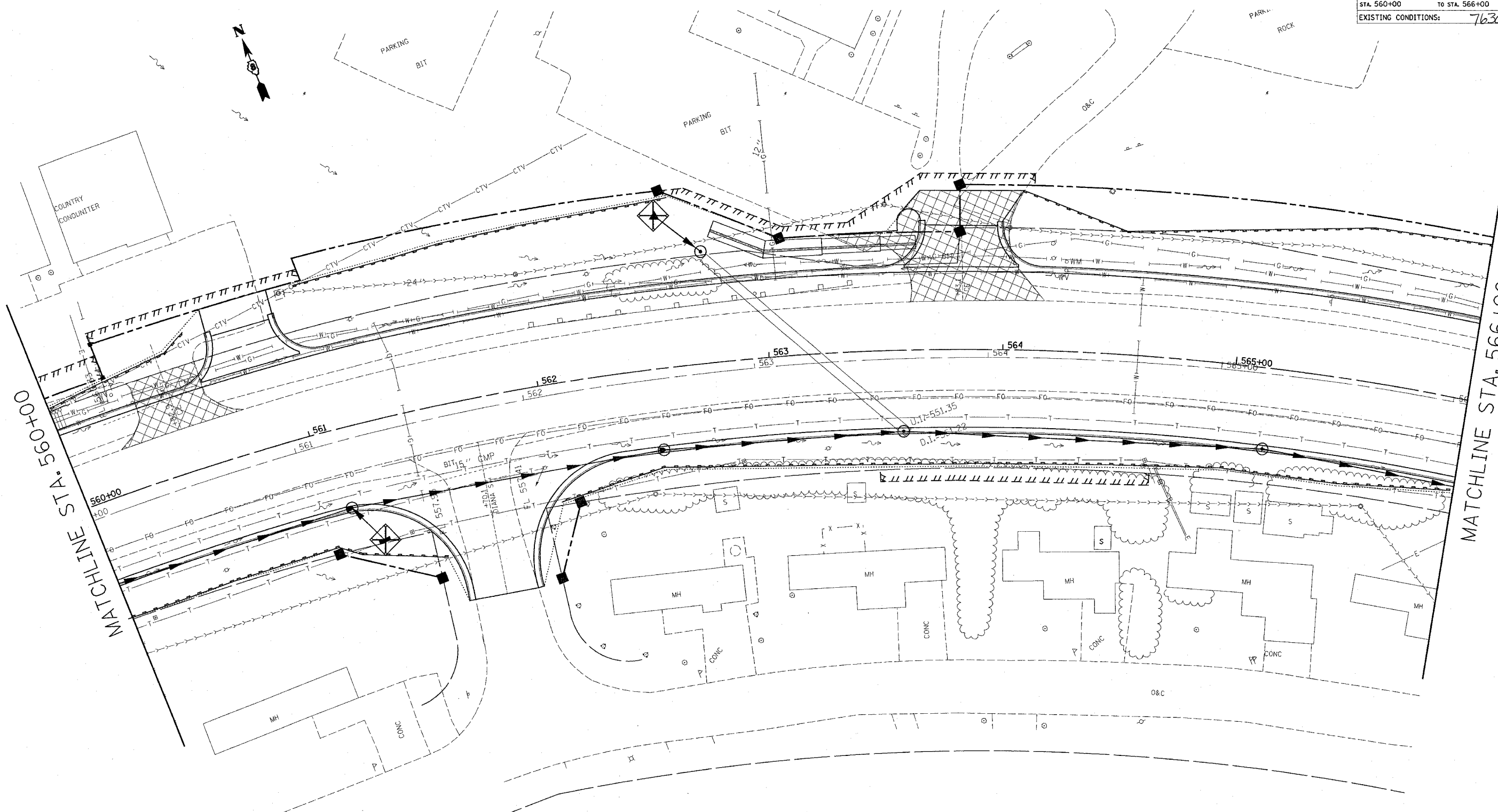
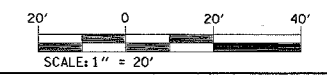


FAP ROUTE	SECTION	COUNTY	TOTAL SHEETS	SHEET NO.
586	60R-2, 37R-1	MADISON	502	141
STA. 560+00		TO STA. 566+00		
EXISTING CONDITIONS:				76301

PLAN NO.	DATE
BY	
REVISIONS	
PROJECT	
ALIGNED	
CHECKED	
NOTED	
FILE NAME	



7/2/2004 8:30:58 AM
 C:\projects\586\60R-2\37R-1\560-566.dgn LV1-53
 C:\projects\586\60R-2\37R-1\560-566.dgn LV1-53
 C:\projects\586\60R-2\37R-1\560-566.dgn LV1-53
 C:\projects\586\60R-2\37R-1\560-566.dgn LV1-53
 C:\projects\586\60R-2\37R-1\560-566.dgn LV1-53
 C:\projects\586\60R-2\37R-1\560-566.dgn LV1-53
 C:\projects\586\60R-2\37R-1\560-566.dgn LV1-53
 C:\projects\586\60R-2\37R-1\560-566.dgn LV1-53
 C:\projects\586\60R-2\37R-1\560-566.dgn LV1-53



REVISIONS	
NAME	DATE

ILLINOIS DEPARTMENT OF TRANSPORTATION
STORM WATER POLLUTION PREVENTION PLAN
 FAP ROUTE 586
 SECTION 60R-2, 37R-2
 MADISON COUNTY
 DRAWN BY:
 PLOT DATE: Friday July 02, 2004 8:30:58 AM

MATCHLINE STA. 560+00

MATCHLINE STA. 566+00