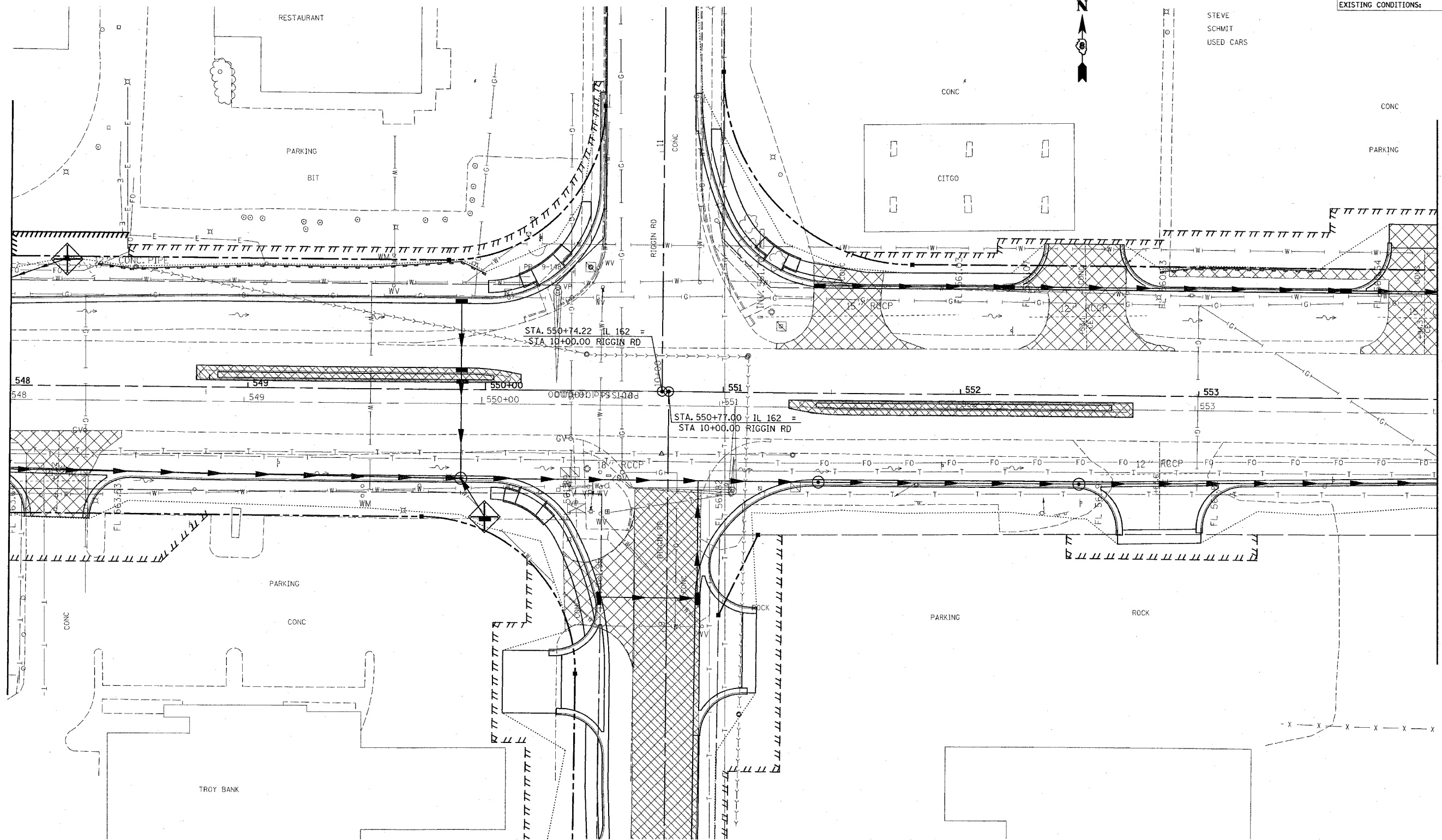


FAP ROUTE	SECTION	COUNTY	TOTAL SHEETS	SHEET NO.
586	60R-2, 37R-1	MADISON	502	139
STA. 548+00		TO STA. 554+00		
EXISTING CONDITIONS:				76301

PLAN	SURVEYED	DATE
NOTE BOOK	ALIGNED	
NO.	CHECKED	
	BY	
	FILE NAME	

MATCHLINE STA. 548+00

MATCHLINE STA. 554+00



REVISIONS	
NAME	DATE

ILLINOIS DEPARTMENT OF TRANSPORTATION
STORM WATER POLLUTION PREVENTION PLAN
 FAP ROUTE 586
 SECTION 60R-2, 37R-1
 MADISON COUNTY

DRAWN BY:

PLOT DATE: Friday July 02, 2004 @ 8:30:58 AM

7/2/2004 8:30:58 AM
 C:\projects\60R-2,37R-1\plan\60R-2,37R-1.dgn LV:1-63
 C:\projects\60R-2,37R-1\plan\60R-2,37R-1.dgn LV:2-63
 C:\projects\60R-2,37R-1\plan\60R-2,37R-1.dgn LV:3-63
 C:\projects\60R-2,37R-1\plan\60R-2,37R-1.dgn LV:4-63
 C:\projects\60R-2,37R-1\plan\60R-2,37R-1.dgn LV:5-63
 C:\projects\60R-2,37R-1\plan\60R-2,37R-1.dgn LV:6-63
 C:\projects\60R-2,37R-1\plan\60R-2,37R-1.dgn LV:7-63
 C:\projects\60R-2,37R-1\plan\60R-2,37R-1.dgn LV:8-63
 C:\projects\60R-2,37R-1\plan\60R-2,37R-1.dgn LV:9-63
 C:\projects\60R-2,37R-1\plan\60R-2,37R-1.dgn LV:10-63
 C:\projects\60R-2,37R-1\plan\60R-2,37R-1.dgn LV:11-63
 C:\projects\60R-2,37R-1\plan\60R-2,37R-1.dgn LV:12-63
 C:\projects\60R-2,37R-1\plan\60R-2,37R-1.dgn LV:13-63
 C:\projects\60R-2,37R-1\plan\60R-2,37R-1.dgn LV:14-63
 C:\projects\60R-2,37R-1\plan\60R-2,37R-1.dgn LV:15-63
 C:\projects\60R-2,37R-1\plan\60R-2,37R-1.dgn LV:16-63
 C:\projects\60R-2,37R-1\plan\60R-2,37R-1.dgn LV:17-63
 C:\projects\60R-2,37R-1\plan\60R-2,37R-1.dgn LV:18-63
 C:\projects\60R-2,37R-1\plan\60R-2,37R-1.dgn LV:19-63
 C:\projects\60R-2,37R-1\plan\60R-2,37R-1.dgn LV:20-63
 C:\projects\60R-2,37R-1\plan\60R-2,37R-1.dgn LV:21-63
 C:\projects\60R-2,37R-1\plan\60R-2,37R-1.dgn LV:22-63
 C:\projects\60R-2,37R-1\plan\60R-2,37R-1.dgn LV:23-63
 C:\projects\60R-2,37R-1\plan\60R-2,37R-1.dgn LV:24-63
 C:\projects\60R-2,37R-1\plan\60R-2,37R-1.dgn LV:25-63
 C:\projects\60R-2,37R-1\plan\60R-2,37R-1.dgn LV:26-63
 C:\projects\60R-2,37R-1\plan\60R-2,37R-1.dgn LV:27-63
 C:\projects\60R-2,37R-1\plan\60R-2,37R-1.dgn LV:28-63
 C:\projects\60R-2,37R-1\plan\60R-2,37R-1.dgn LV:29-63
 C:\projects\60R-2,37R-1\plan\60R-2,37R-1.dgn LV:30-63
 C:\projects\60R-2,37R-1\plan\60R-2,37R-1.dgn LV:31-63
 C:\projects\60R-2,37R-1\plan\60R-2,37R-1.dgn LV:32-63
 C:\projects\60R-2,37R-1\plan\60R-2,37R-1.dgn LV:33-63
 C:\projects\60R-2,37R-1\plan\60R-2,37R-1.dgn LV:34-63
 C:\projects\60R-2,37R-1\plan\60R-2,37R-1.dgn LV:35-63
 C:\projects\60R-2,37R-1\plan\60R-2,37R-1.dgn LV:36-63
 C:\projects\60R-2,37R-1\plan\60R-2,37R-1.dgn LV:37-63
 C:\projects\60R-2,37R-1\plan\60R-2,37R-1.dgn LV:38-63
 C:\projects\60R-2,37R-1\plan\60R-2,37R-1.dgn LV:39-63
 C:\projects\60R-2,37R-1\plan\60R-2,37R-1.dgn LV:40-63
 C:\projects\60R-2,37R-1\plan\60R-2,37R-1.dgn LV:41-63
 C:\projects\60R-2,37R-1\plan\60R-2,37R-1.dgn LV:42-63
 C:\projects\60R-2,37R-1\plan\60R-2,37R-1.dgn LV:43-63
 C:\projects\60R-2,37R-1\plan\60R-2,37R-1.dgn LV:44-63
 C:\projects\60R-2,37R-1\plan\60R-2,37R-1.dgn LV:45-63
 C:\projects\60R-2,37R-1\plan\60R-2,37R-1.dgn LV:46-63
 C:\projects\60R-2,37R-1\plan\60R-2,37R-1.dgn LV:47-63
 C:\projects\60R-2,37R-1\plan\60R-2,37R-1.dgn LV:48-63
 C:\projects\60R-2,37R-1\plan\60R-2,37R-1.dgn LV:49-63
 C:\projects\60R-2,37R-1\plan\60R-2,37R-1.dgn LV:50-63