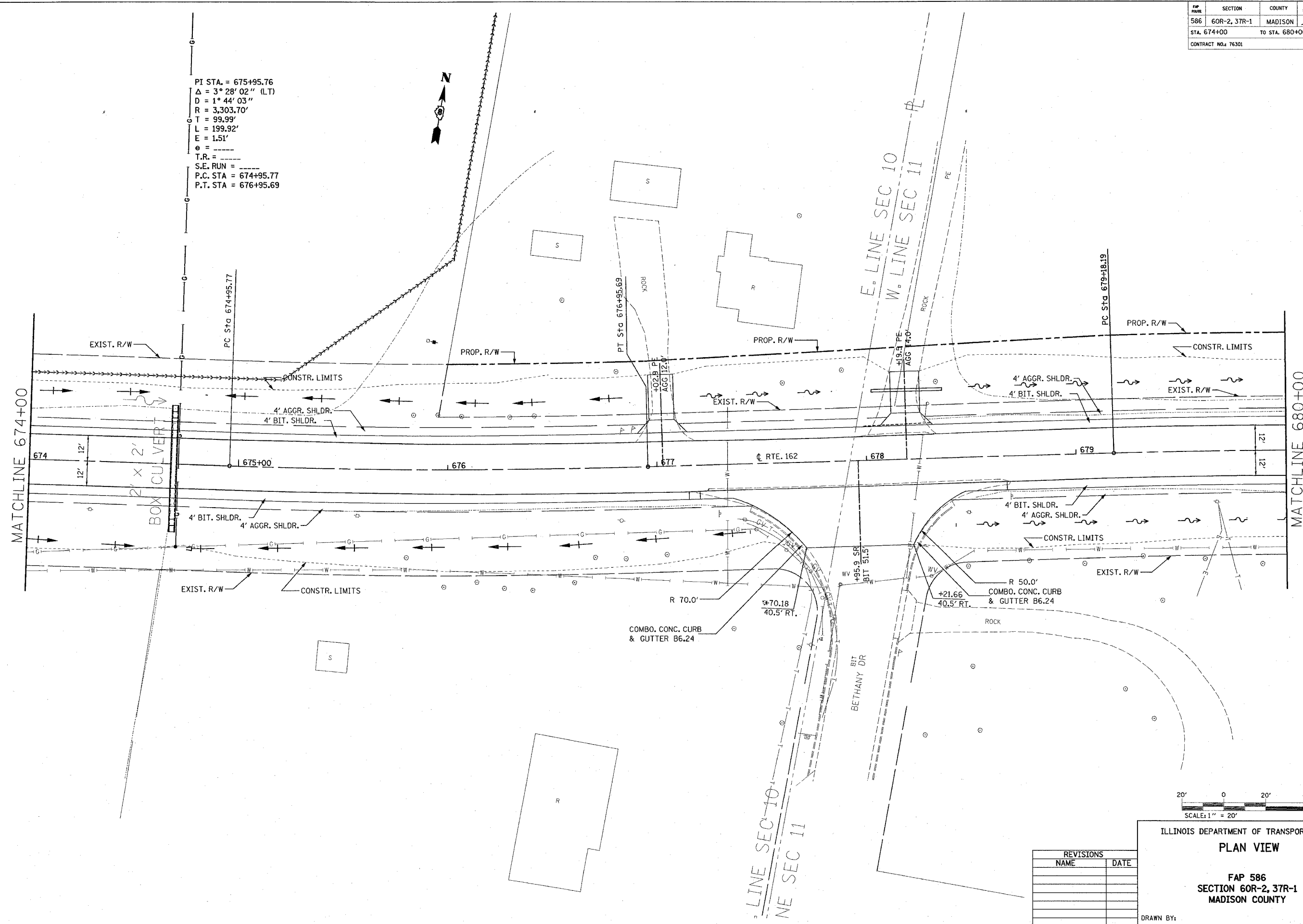


FAP NO.	SECTION	COUNTY	TOTAL SHEETS	SHEET NO.
586	60R-2, 3TR-1	MADISON	502	79
STA. 674+00 TO STA. 680+00				
CONTRACT NO. 76301				

PLN	NO.	DATE
SURVEYED		
NOTED		
ALIGNED		
CHECKED		
BY FILE NAME		

PI STA. = 675+95.76
 $\Delta = 3^\circ 28' 02''$ (LT)
 $D = 1^\circ 44' 03''$
 $R = 3,303.70'$
 $L = 99.99'$
 $E = 199.92'$
 $E = 1.51'$
 $e =$
 T.R. =
 S.E. RUN =
 P.C. STA. = 674+95.77
 P.T. STA. = 676+95.69



MATCHLINE 674+00

MATCHLINE 680+00



ILLINOIS DEPARTMENT OF TRANSPORTATION
PLAN VIEW

FAP 586
SECTION 60R-2, 3TR-1
MADISON COUNTY

REVISIONS	
NAME	DATE

DRAWN BY:
PLOT DATE: Thursday July 01, 2004 @ 2:04:44 PM

7/1/2004
 Thursday July 01, 2004 @ 2:04:44 PM
 C:\projects\60R-2, 3TR-1\60R-2, 3TR-1.dwg
 User: jg
 Plot Date: 7/1/2004 2:04:44 PM
 Plot Scale: 1" = 20'
 Plot Size: 30" x 42"