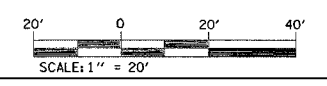
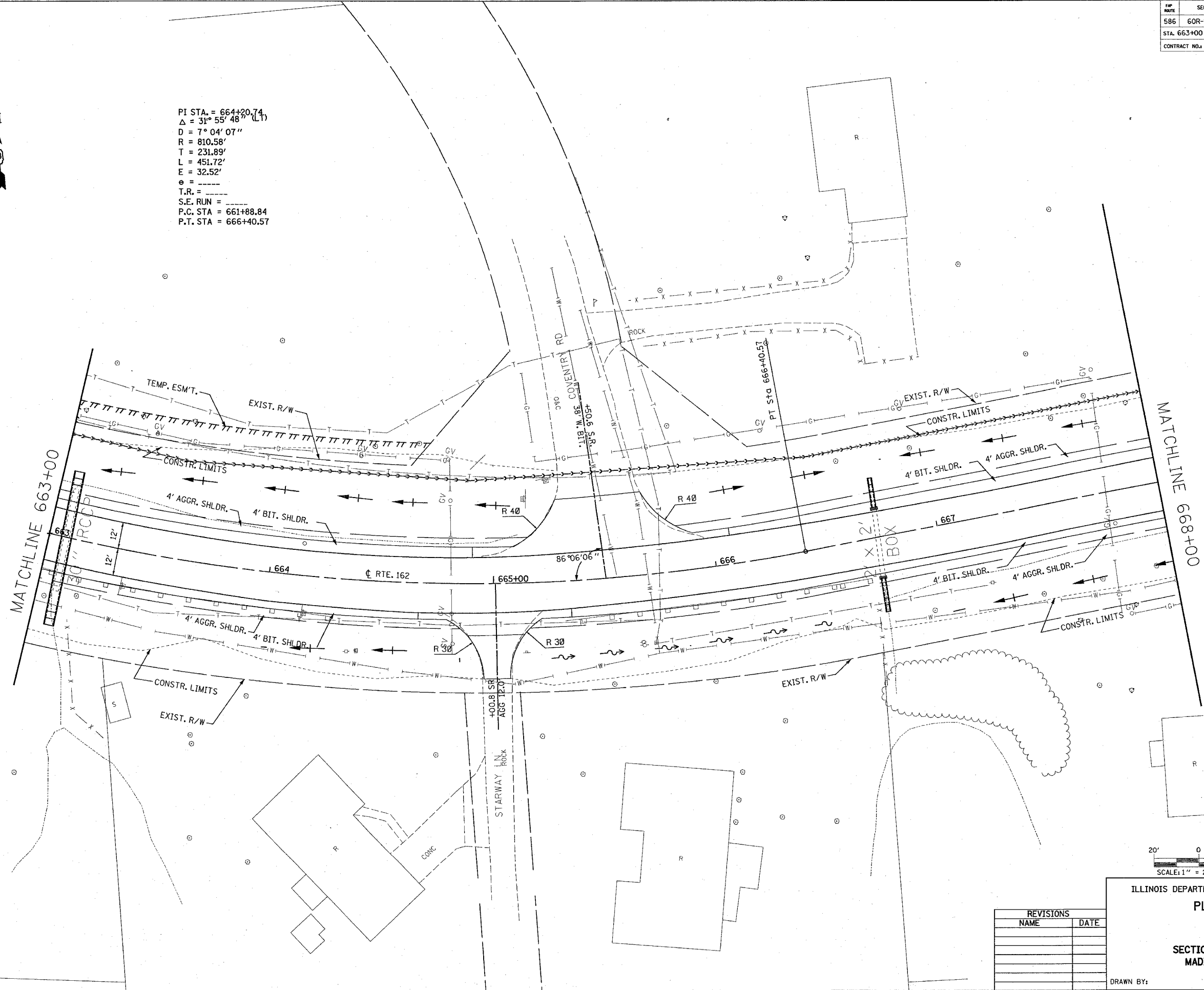


FAP NO.	SECTION	COUNTY	TOTAL SHEETS	SHEET NO.
586	60R-2, 37R-1	MADISON	502	77
STA. 663+00		TO STA. 668+00		
CONTRACT NO.: 76301				

PI STA. = 664+20.74  
 $\Delta = 31^{\circ} 55' 48''$  (LT)  
 D = 7° 04' 07"  
 R = 810.58'  
 T = 231.89'  
 L = 451.72'  
 E = 32.52'  
 e = -----  
 T.R. = -----  
 S.E. RUN = -----  
 P.C. STA = 661+88.84  
 P.T. STA = 666+40.57



PLAN	NO.	DATE
DESIGNED		
CHECKED		
ALIGNED		
NOTED		
BY		



REVISIONS	
NAME	DATE

ILLINOIS DEPARTMENT OF TRANSPORTATION  
**PLAN VIEW**  
 FAP 586  
 SECTION 60R-2, 37R-1  
 MADISON COUNTY  
 DRAWN BY:

7/1/2004  
 Thursday July 01, 2004 8:20:45 AM  
 C:\p00\proj\586\plan\586\_01.dwg  
 L:\1\143  
 C:\p00\proj\586\plan\586\_01.dwg  
 L:\1\143  
 C:\p00\proj\586\plan\586\_01.dwg  
 L:\1\143