

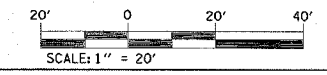
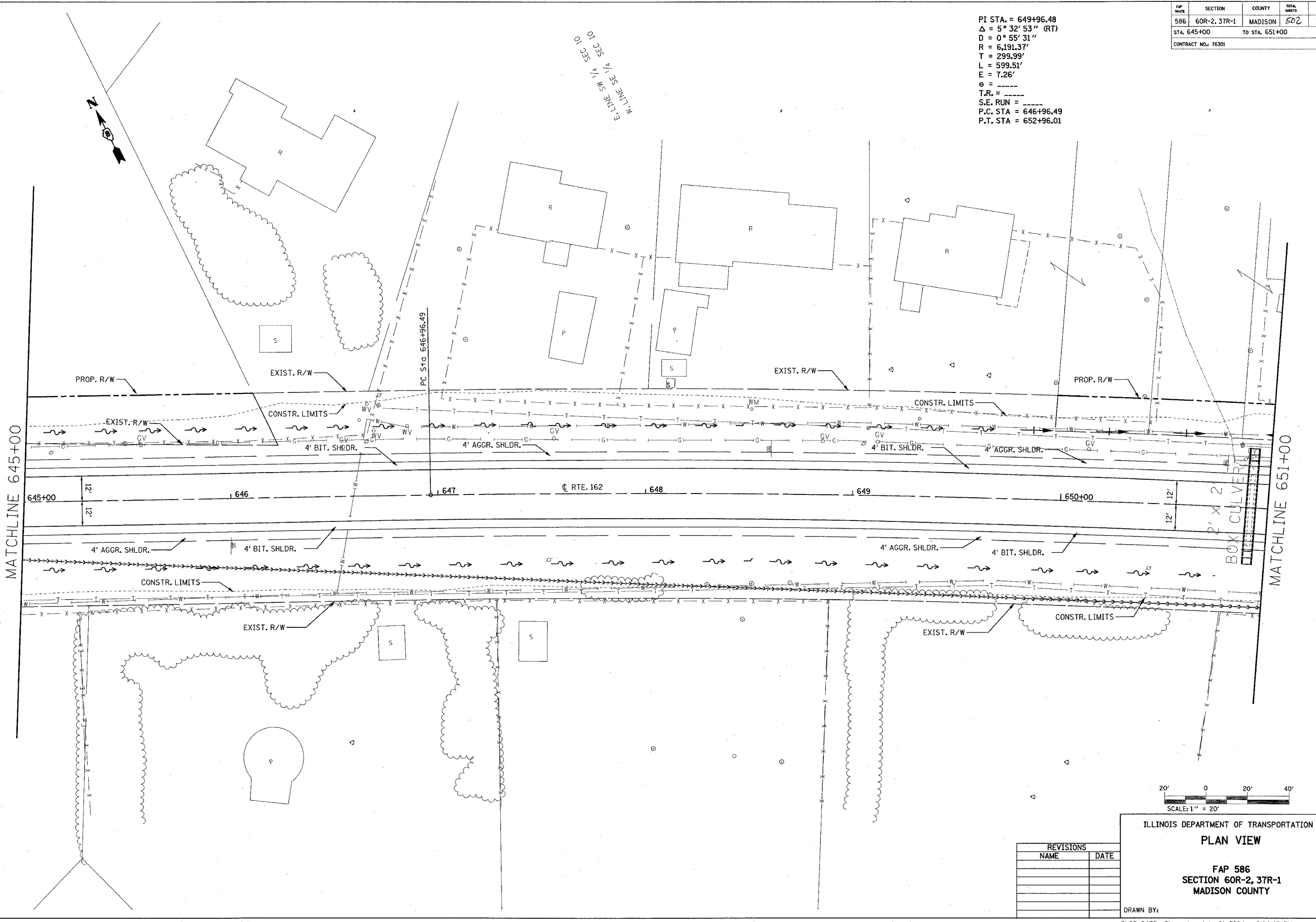
FAP ROUTE	SECTION	COUNTY	TOTAL SHEETS	SHEET NO.
586	60R-2, 3TR-1	MADISON	502	74
STA. 645+00 TO STA. 651+00			CONTRACT NO.: 76301	

PI STA. = 649+96.48
 $\Delta = 5^\circ 32' 53''$ (RT)
 $D = 0^\circ 55' 31''$
 $R = 6,191.37'$
 $T = 299.99'$
 $L = 599.51'$
 $E = 7.26'$
 $\theta = \text{---}$
 $T.R. = \text{---}$
 $S.E. RUN = \text{---}$
 $P.C. STA. = 646+96.49$
 $P.T. STA. = 652+96.01$

PLAN NO.	DATE	BY

MATCHLINE 645+00

MATCHLINE 651+00



REVISIONS	
NAME	DATE

ILLINOIS DEPARTMENT OF TRANSPORTATION
PLAN VIEW
 FAP 586
 SECTION 60R-2, 3TR-1
 MADISON COUNTY
 DRAWN BY:

7/1/2004
 Thursday, July 01, 2004 @ 2:04:46 PM
 c:\projects\60R-2,3TR-1\plan\p08.dgn LVH:63
 c:\projects\60R-2,3TR-1\plan\p08.dgn LVH:63
 c:\projects\60R-2,3TR-1\plan\p08.dgn LVH:63
 c:\projects\60R-2,3TR-1\plan\p08.dgn LVH:63

PLOT DATE: Thursday July 01, 2004 @ 2:04:46 PM