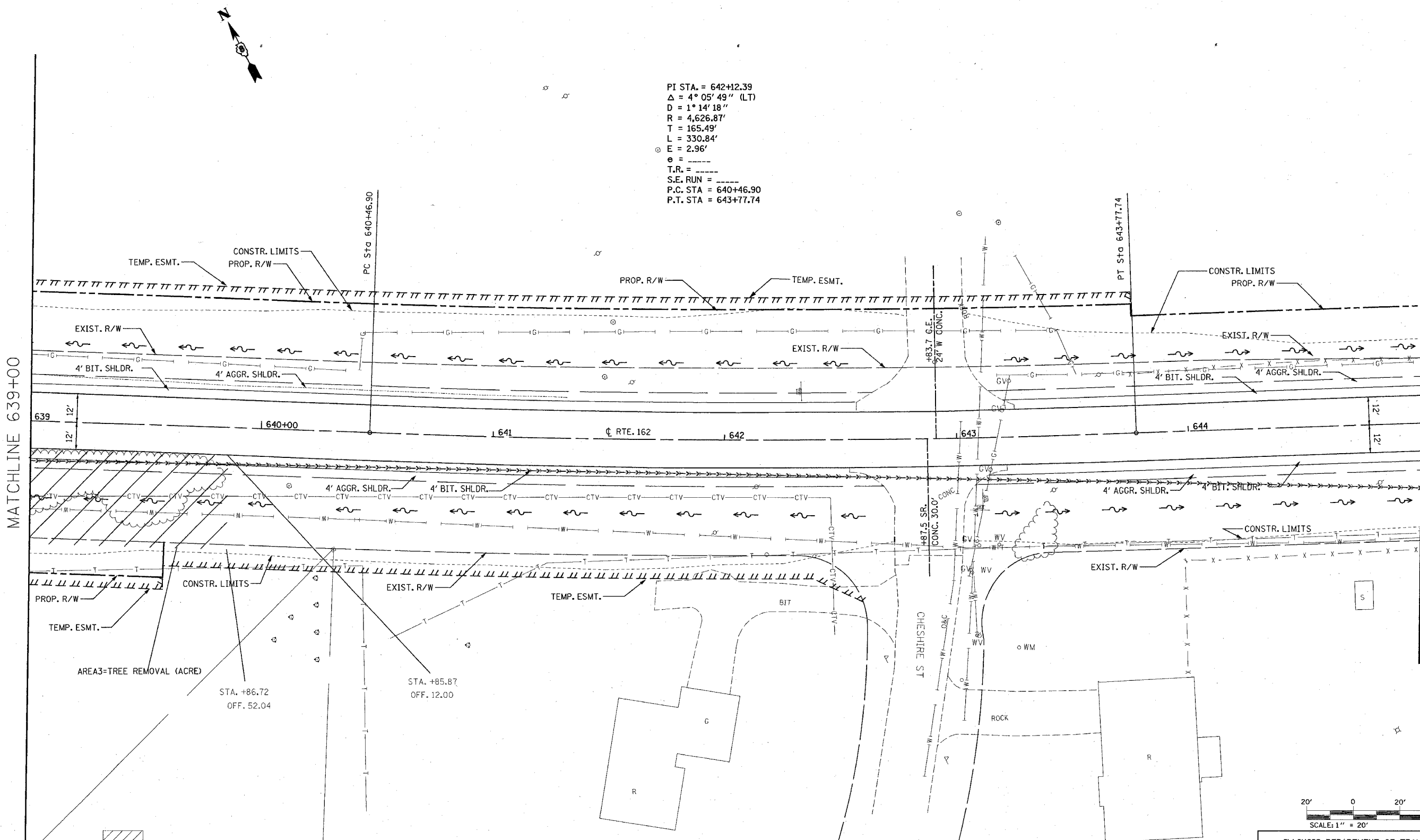


FAP ROUTE	SECTION	COUNTY	TOTAL SHEETS	SHEET NO.
586	60R-2, 3TR-1	MADISON	502	73
STA. 639+00		TO STA. 645+00		
CONTRACT NO.: 76301				

PLAN	DATE
BY	
REVISIONS	
NO.	
NOTE BOOK	
ALIGNMENT CHECKED	
CONC. FILE NAME	

PI STA. = 642+12.39
 $\Delta = 4^\circ 05' 49''$ (LT)
 $D = 1^\circ 14' 18''$
 $R = 4,626.87'$
 $T = 165.49'$
 $L = 330.84'$
 $E = 2.96'$
 $e =$
 $T.R. =$
 $S.E. RUN =$
 P.C. STA = 640+46.90
 P.T. STA = 643+77.74



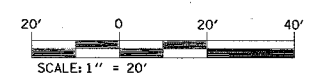
MATCHLINE 639+00

MATCHLINE 645+00

7/1/2004
 Thursday, July 01, 2004 2:04:46 PM
 C:\progrs\autocad\plot\p11111111.dwg L:\2004\60R-2,3TR-1\517222527-29\37-48\44-46-48-50-53-57-59
 C:\progrs\autocad\plot\p11111111.dwg L:\2004\60R-2,3TR-1\517222527-29\37-48\44-46-48-50-53-57-59
 C:\progrs\autocad\plot\p11111111.dwg L:\2004\60R-2,3TR-1\517222527-29\37-48\44-46-48-50-53-57-59

TREE REMOVAL (ACRES)

STA. +86.72
 OFF. 52.04
 STA. +85.87
 OFF. 12.00



REVISIONS	
NAME	DATE

ILLINOIS DEPARTMENT OF TRANSPORTATION
PLAN VIEW
 FAP 586
 SECTION 60R-2, 3TR-1
 MADISON COUNTY
 DRAWN BY:

PLOT DATE: Thursday July 01, 2004 2:04:46 PM