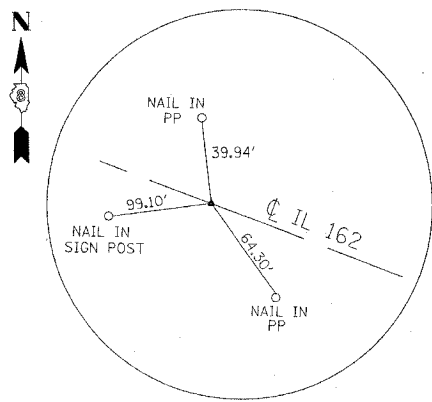


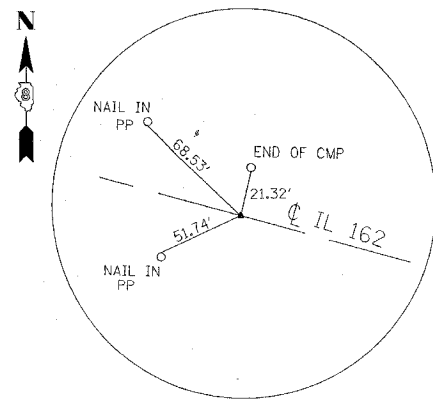
FAP ROUTE	SECTION	COUNTY	TOTAL SHEETS	SHEET NO
586	60R-2, 37R-1	MADISON	502	45

CONTRACT #76301

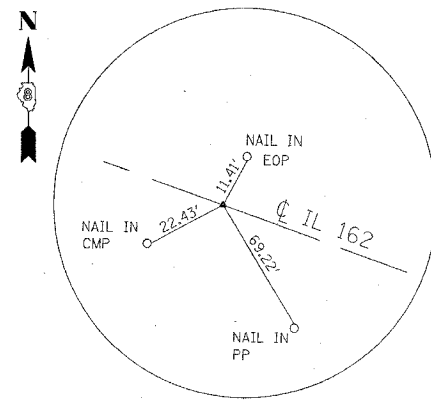
PLAN	REVISIONS	DATE
NO.	BY	
	CHECKED	
	DATE	



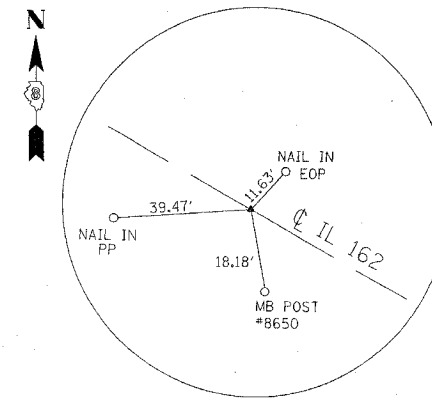
NAIL IN PAVEMENT
PC STA. 646+96.49
N 748,281.99 E 2,382,370.12



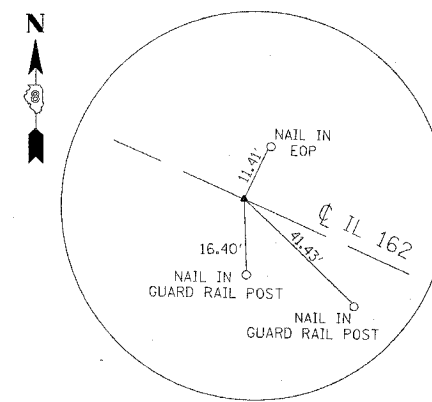
NAIL IN PAVEMENT
PT STA. 652+96.01
N 747,992.74 E 2,382,894.97



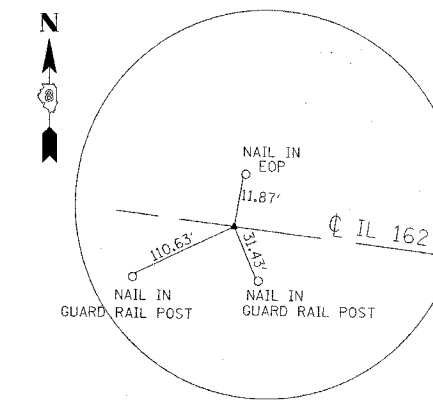
NAIL IN PAVEMENT
PC STA. 657+26.62
N 747,767.05 E 2,383,261.71



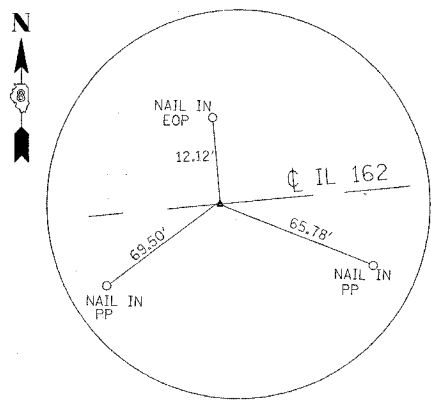
NAIL IN PAVEMENT
PT STA. 660+81.45
N 747,599.01 E 2,383,574.01



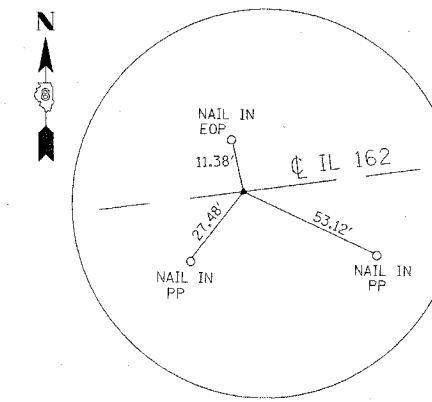
NAIL IN PAVEMENT
PC STA. 661+88.84
N 747,554.90 E 2,383,671.92



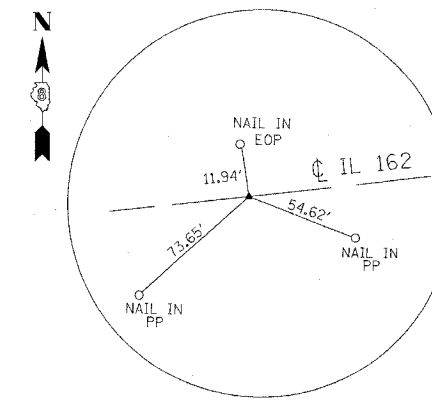
NAIL IN PAVEMENT
PT STA. 666+40.57
N 747,490.27 E 2,384,113.11



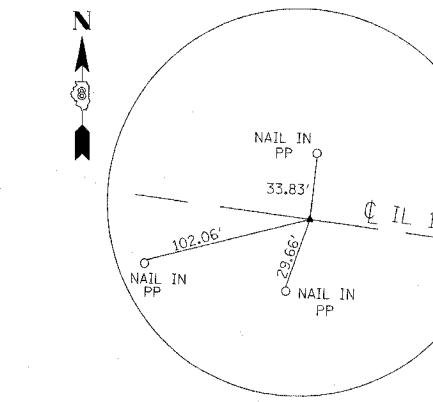
NAIL IN PAVEMENT
PC STA. 674+95.77
N 747,608.67 E 2,384,960.08



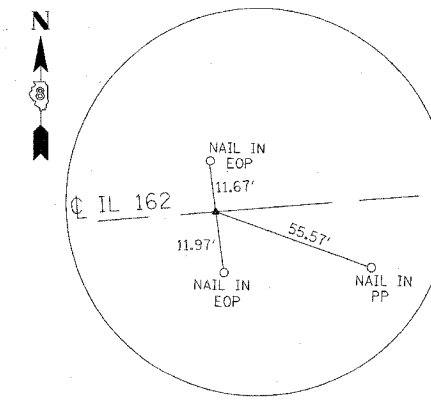
NAIL IN PAVEMENT
PT STA. 676+95.69
N 747,642.97 E 2,385,157.00



NAIL IN PAVEMENT
PC STA. 679+18.19
N 747,687.71 E 2,385,374.96



NAIL IN PAVEMENT
PT STA. 682+40.11
N 747,739.11 E 2,385,692.65



NAIL IN PAVEMENT
PC STA. 695+39.94
N 747,889.92 E 2,386,983.70

REVISIONS	
NAME	DATE

ILLINOIS DEPARTMENT OF TRANSPORTATION
ALIGNMENT TIE POINTS
AND BENCHMARKS
FAP ROUTE 586 (IL 162)
SECTION 60R-2, 37R-1
MADISON COUNTY
DRAWN BY:
PLOT DATE: Friday July 02, 2004 10:11:31 AM