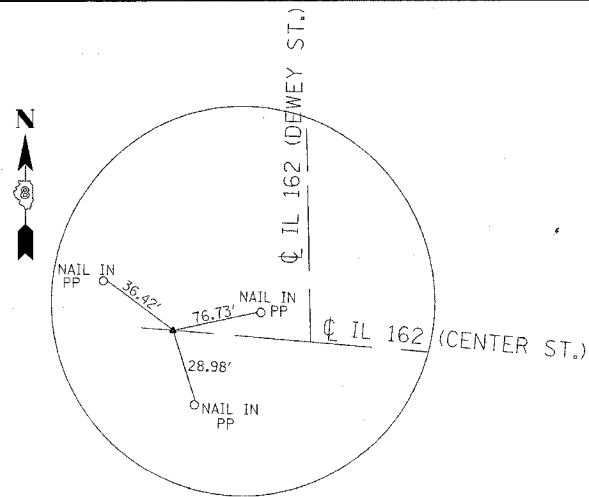
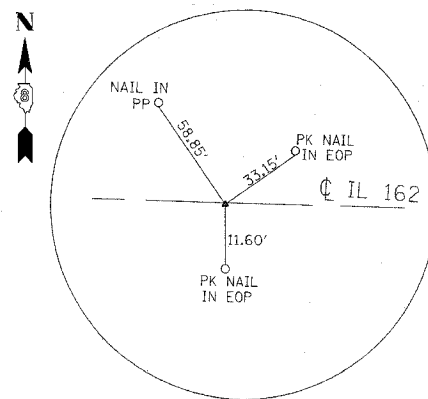


FAP ROUTE	SECTION	COUNTY	TOTAL SHEETS	SHEET NO
586	60R-2, 37R-1	MADISON	502	44
CONTRACT #76301				

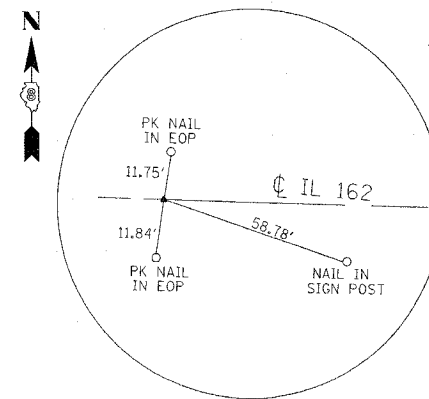
PLAN	REVISED	DATE
NOTE BOOK NO.	ALIGNED	
	CHECKED	
	PLOTTED	
	FILED	
	FILE NAME	



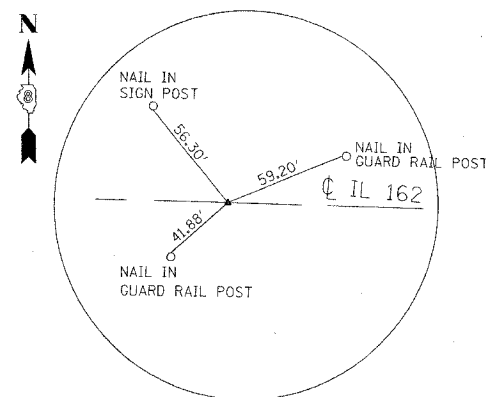
PK NAIL IN PAVEMENT  
PC STA. 607+45.63  
N 750,543.37 E 2,379,251.72



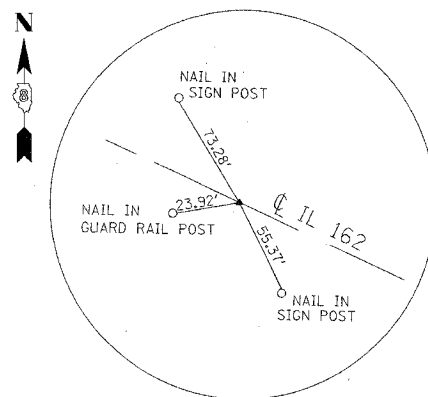
PK NAIL IN PAVEMENT  
POINT STA. 612+00  
N 750,385.87 E 2,379,674.09



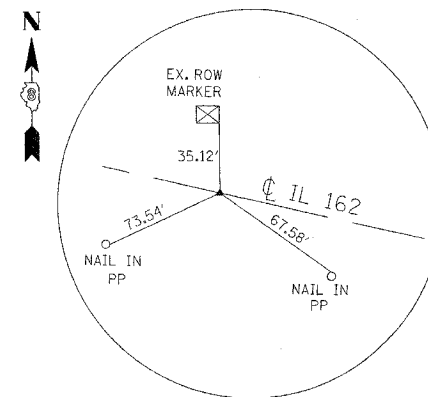
PK NAIL IN PAVEMENT  
PT STA. 616+67.43  
N 750,053.62 E 2,379,997.30



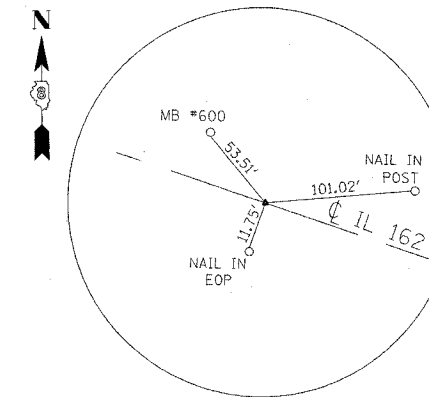
NAIL IN PAVEMENT  
PC STA. 620+91.42  
N 749,691.55 E 2,380,217.93



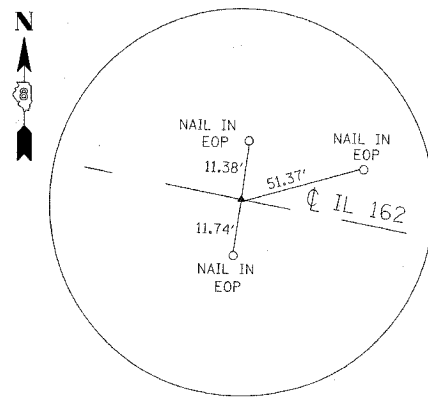
PK NAIL IN PAVEMENT  
POINT STA. 626+00  
N 749,303.27 E 2,380,543.43



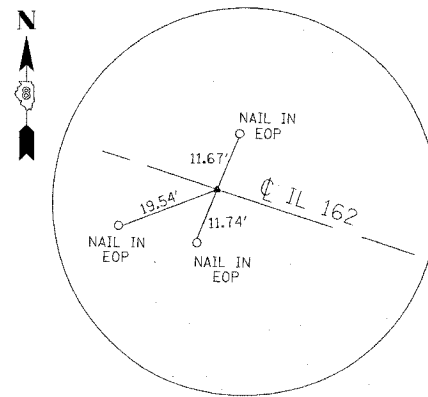
NAIL IN PAVEMENT  
PT STA. 630+21.92  
N 749,066.22 E 2,380,891.15



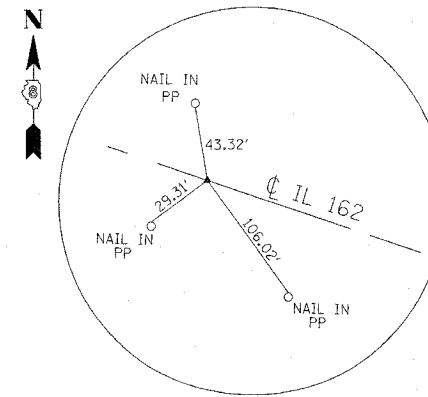
NAIL IN PAVEMENT  
PC STA. 634+32.34  
N 748,878.70 E 2,381,256.22



NAIL IN PAVEMENT  
PT 637+52.81  
N 748,725.20 E 2,381,537.50



PK NAIL IN PAVEMENT  
PC 640+46.90  
N748,577.81 E 2,381,791.99



NAIL IN PAVEMENT  
PT 643+77.74  
N 748,422.01 E 2,382,083.77

REVISIONS	
NAME	DATE

ILLINOIS DEPARTMENT OF TRANSPORTATION  
ALIGNMENT TIE POINTS  
AND BENCHMARKS  
FAP ROUTE 586 (IL 162)  
SECTION 60R-2, 37R-1  
MADISON COUNTY  
DRAWN BY:

7/2/2004 10:11:37 AM  
C:\pwork\586\586.dgn