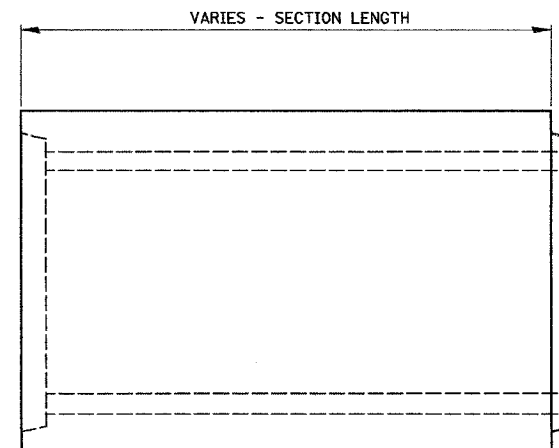
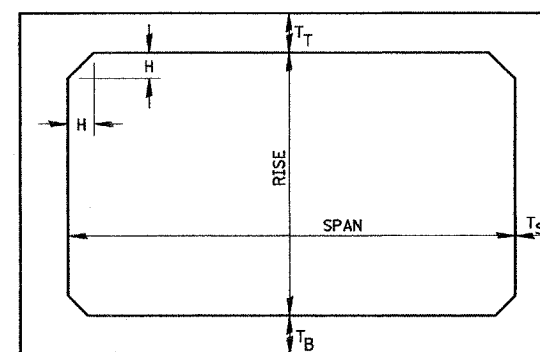


NOTES:  
TO BE USED AT ALL END SECTIONS.  
PRC FLARED END SECTION SHOWN. TREATMENT SAME FOR OTHER END SECTIONS.  
SEE PLAN AND PROFILE FOR TREATMENT DOWNSTREAM OF CULVERT AT STA. 94+41.

DETAIL OF EROSION CONTROL BLANKET LINING AROUND END SECTION



ELEVATION



NOTE: THE HAUNCH DIMENSION H, IS EQUAL TO THE WALL THICKNESS T<sub>S</sub>.

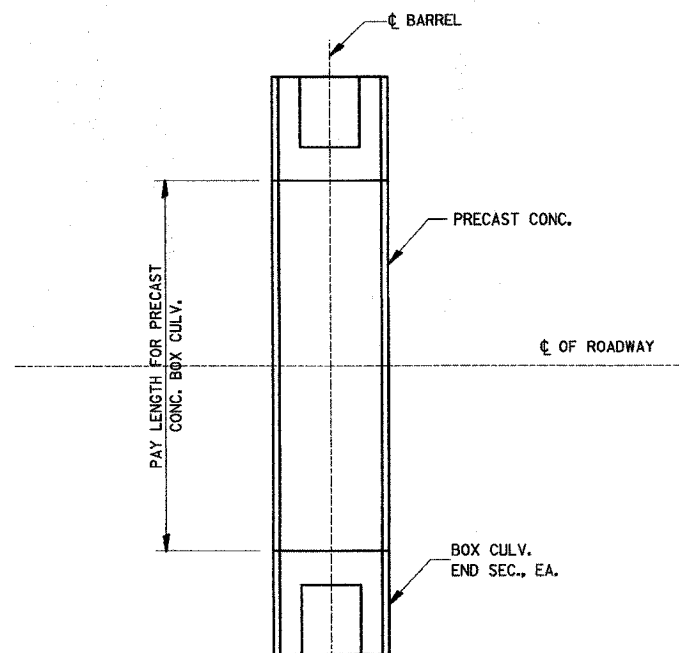
TYPICAL BOX SECTION

SPAN, FEET	T <sub>T</sub> , INCHES		T <sub>B</sub> , INCHES		T <sub>S</sub> , INCHES	
	M 259	M 273	M 259	M 273	M 259	M 273
3	4	7	4	6	4	4
4	5	7 1/2	5	6	5	5
5	6	8	6	7	6	6
6	7	8	7	7	7	7
7	8	8	8	8	8	8
8	8	8	8	8	8	8
9	9	9	9	9	9	9
10	10	10	10	10	10	10
11	11	11	11	11	11	11
12	12	12	12	12	12	12

TYPICAL THICKNESSES

GENERAL NOTES:

MINIMUM COVER FOR BOX CULVERTS SHALL BE 6".



PAY LENGTH FOR PRECAST CONCRETE BOX CULVERT

N.T.S.

PLAN SURVEYED BY DATE  
FIELD CHECKED BY  
ALIGNED CHECKED BY  
RT. OF WAY CHECKED BY  
NO. OF W.P. CHECKED BY  
ROAD FILE NAME

PROFILE SURVEYED BY DATE  
FIELD CHECKED BY  
E.M. NOTED BY  
STRUCTURE NOTATIONS OK'D BY  
NOTE BOOK NO.

\*\*\*\*\*DATE\*\*\*\*\*

ILLINOIS DEPARTMENT OF TRANSPORTATION  
FAU 6194 (ILLINOIS ROUTE 113)  
MISCELLANEOUS DETAILS

SCALE: VERT. DATE  
HORIZ. CHECKED BY  
DRAWN BY