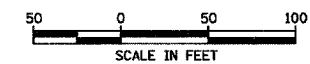
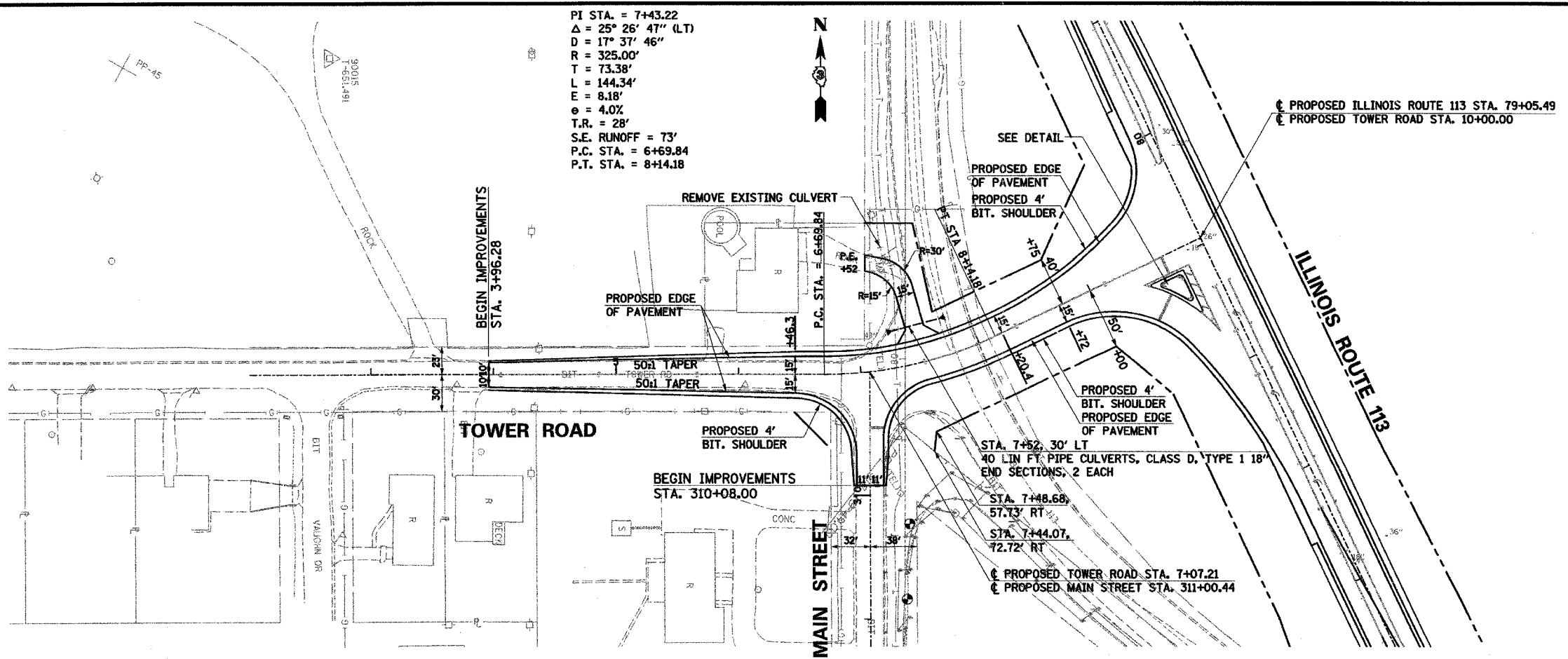


F.A.U. RTE.	SECTION	COUNTY	TOTAL SHEETS	SHEET NO.
6194 (109)R, RS-4		KANKAKEE	82	28
STA.		TO STA.		
FED. ROAD DIST. NO.		ILLINOIS FED. AID PROJECT		

66402



PI STA. = 7+43.22
 $\Delta = 25^\circ 26' 47''$ (LT)
 $D = 17^\circ 37' 46''$
 $R = 325.00'$
 $T = 73.38'$
 $L = 144.34'$
 $E = 8.18'$
 $e = 4.0\%$
 $T.R. = 28'$
 $S.E. RUNOFF = 73'$
 $P.C. STA. = 6+69.84$
 $P.T. STA. = 8+14.18$



LEGEND

	EXISTING R.O.W.
	PROPOSED R.O.W.
	TEMPORARY EASEMENT
	FLOW ARROW

PLAN

DATE	BY

REVISIONS

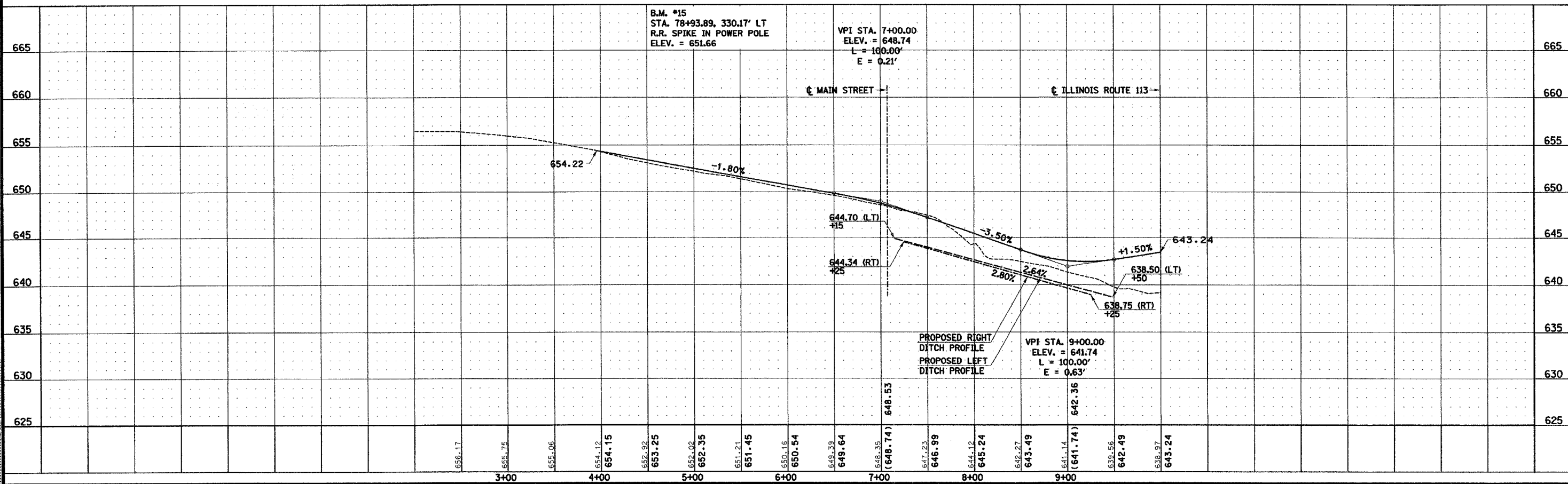
NO.	DESCRIPTION

PROFILE

DATE	BY

REVISIONS

NO.	DESCRIPTION



*****DATE*****

TOWER ROAD STA. 3+96.28 TO STA. 10+00.00 - PLAN AND PROFILE