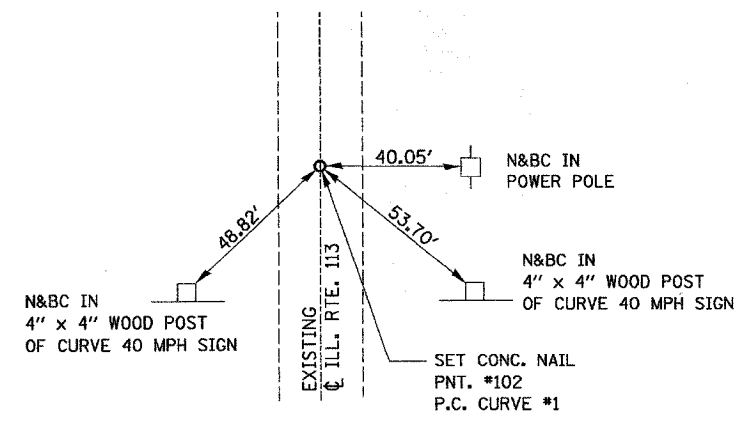


F.A.U. RTE.	SECTION	COUNTY	TOTAL SHEETS	SHEET NO.
6194 (109)R, RS-4		KANKAKEE	82	21
STA.		TO STA.		
FED. ROAD DIST. NO.	ILLINOIS	FED. AID PROJECT		

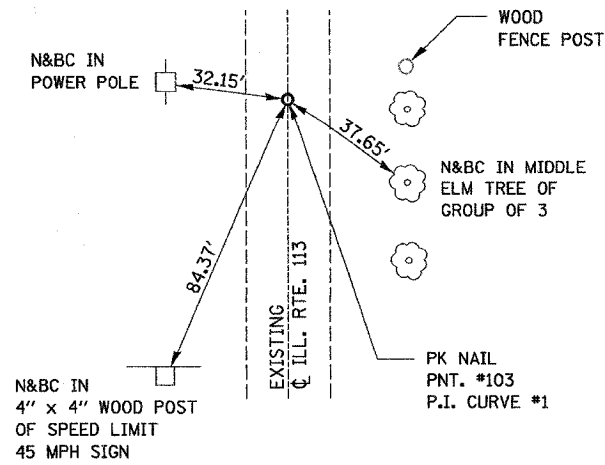
66402



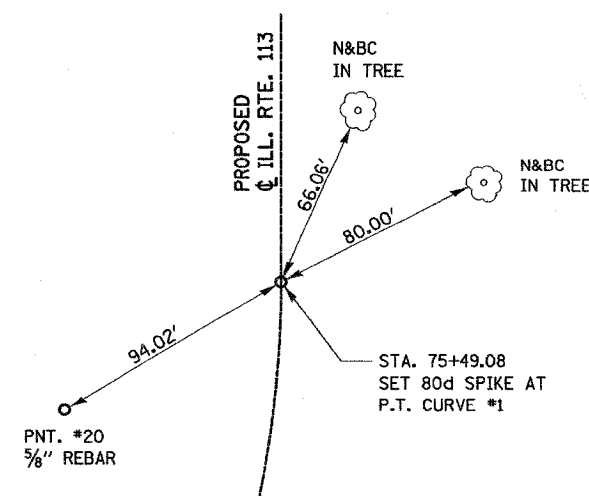
PLAN	DATE
SURVEYED	
CHECKED	
DATE	
BY	
NO.	



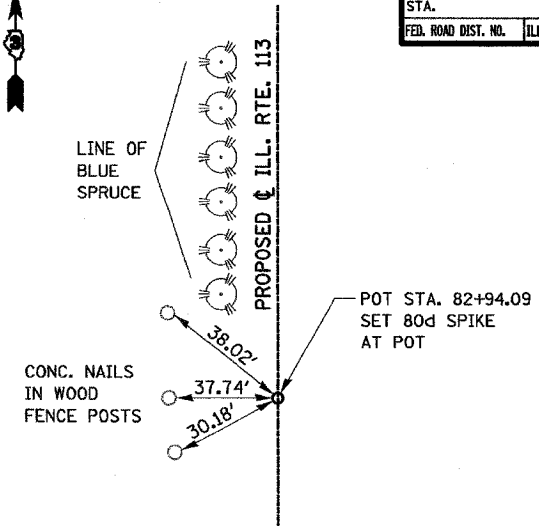
STA. 70+12.93
EXISTING ILL. RTE. 113
P.C. CURVE #1
PNT. #102



STA. 72+85.55
EXISTING ILL. RTE. 113
P.I. CURVE #1
PNT. #103

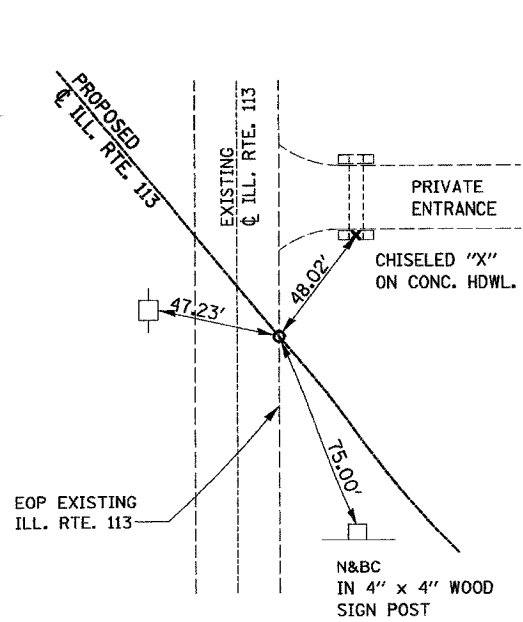


STA. 75+49.08
PROPOSED CENTERLINE
PT CURVE #1

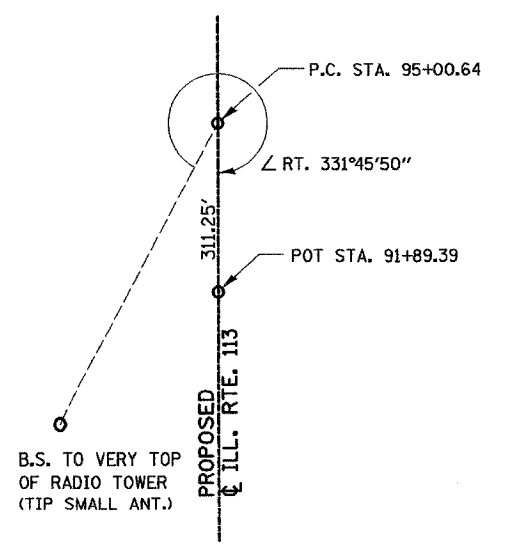


STA. 82+94.09
PROPOSED CENTERLINE

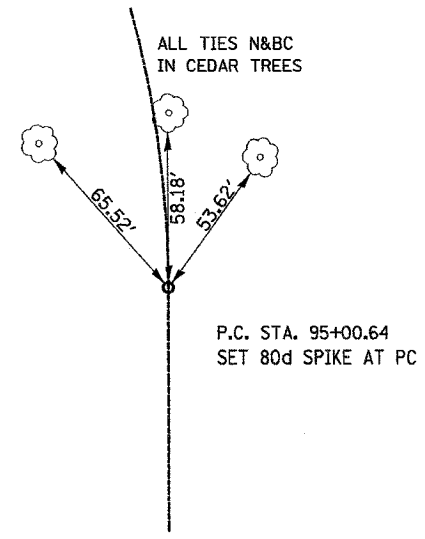
PROFILE	DATE
SURVEYED	
CHECKED	
DATE	
BY	
NO.	



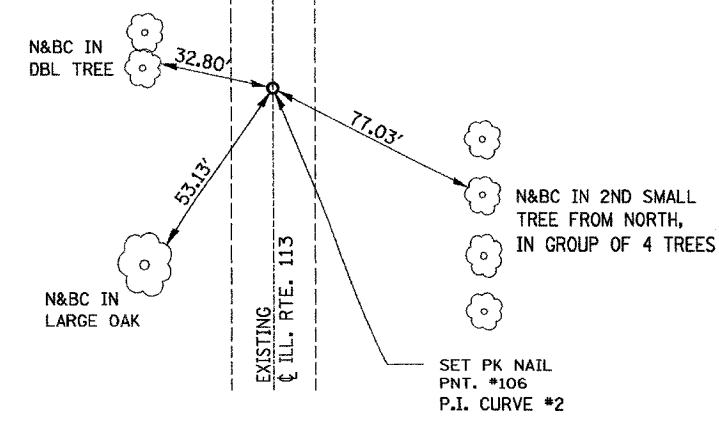
STA. 84+34.31
SET CONC. NAIL CLOSE TO EOP NBL
EXISTING ILL. RTE. 113 AT POT



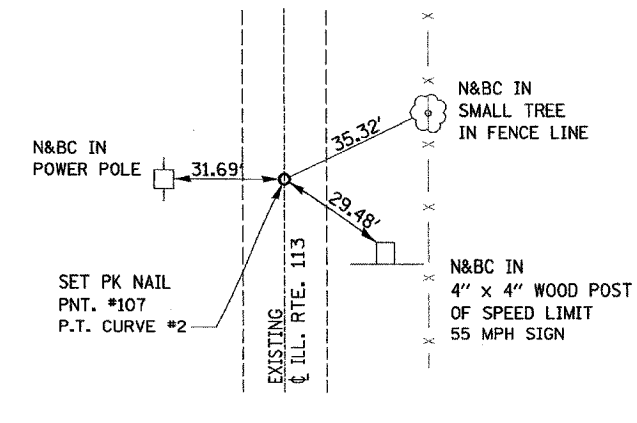
STA. 91+89.39
SET 16d DBL NAIL AT POT STA. 91+89.39
SET ANGLE & DIST. TIES USING VERY TOP OF
RADIO TOWER SO. WEST OF PC STA. 95+00.64



STA. 95+00.64
PROPOSED CENTERLINE



STA. 100+41.18
EXISTING ILL. RTE. 113
P.I. CURVE #2
PNT. #106



STA. 105+16.384
EXISTING ILL. RTE. 113
P.T. CURVE #2
PNT. #107

ILLINOIS DEPARTMENT OF TRANSPORTATION
 FAU 6194 (ILLINOIS ROUTE 113)
TIE POINTS
 (ILLINOIS ROUTE 113)

SCALE: VERT. _____
 HORIZ. _____
 DATE _____

DRAWN BY _____
 CHECKED BY _____

*****DATE*****