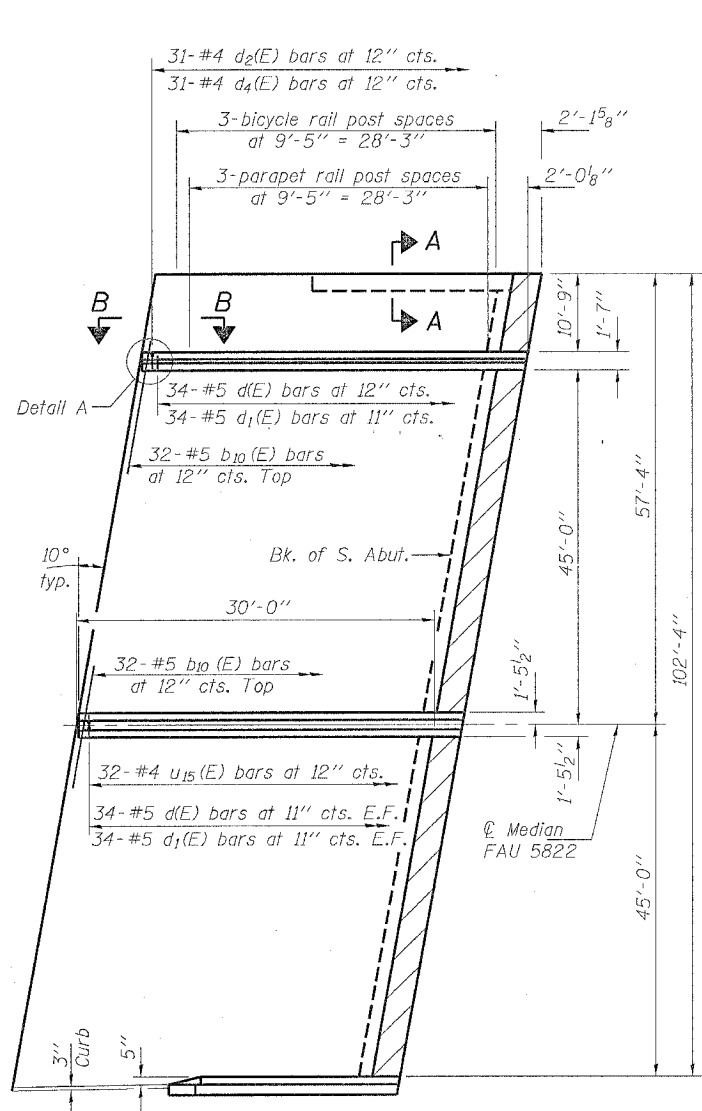


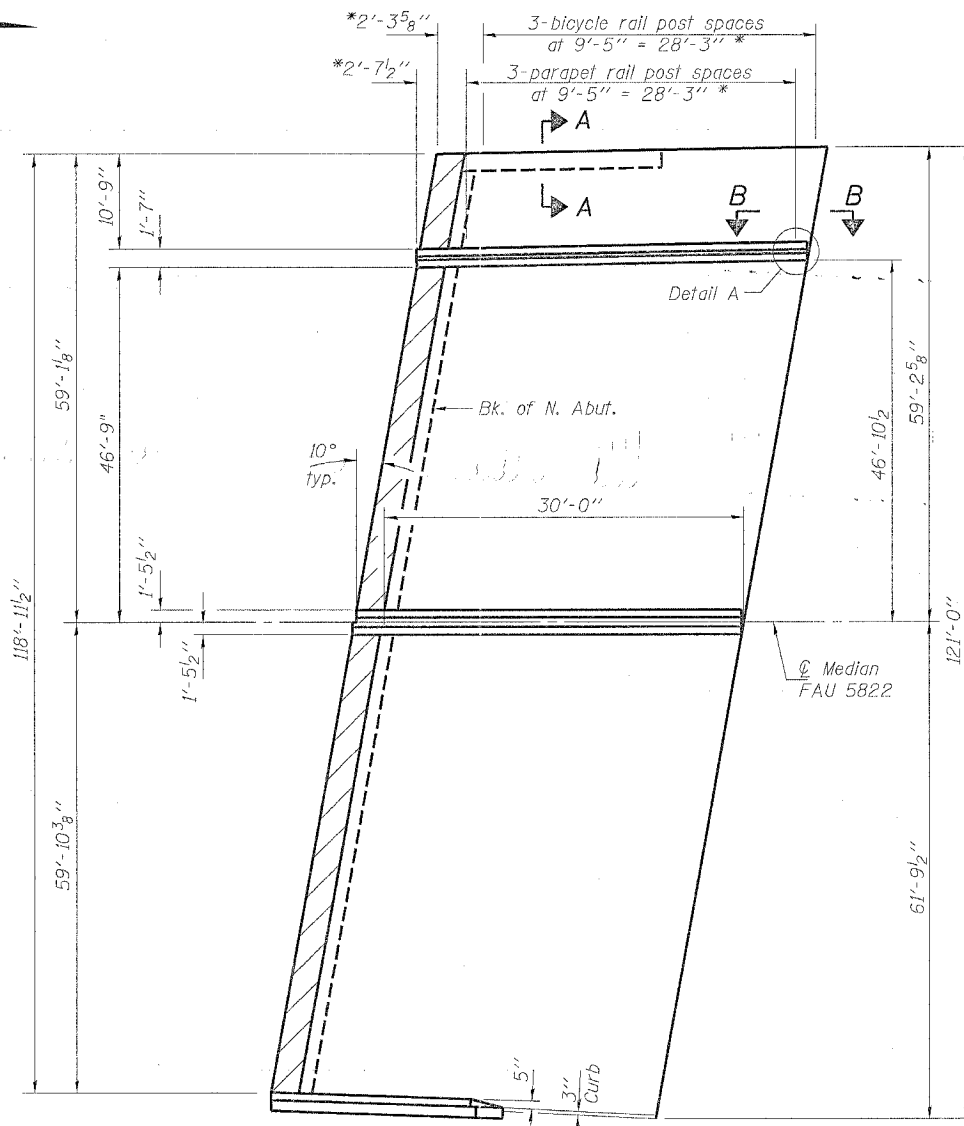
STATE OF ILLINOIS
DEPARTMENT OF TRANSPORTATION

ROUTE NO.	SECTION	COUNTY	TOTAL SHEETS	SHEET NO.	SHEET NO.
FAP 595	I-3-K	Rock Island	476	289A	
FED. AID PROJ. NO. 7	ILLINOIS	FED. AID PROJECT-			SHEETS

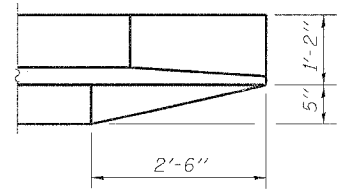


PLAN VIEW

(Dimensions are at right L's to \odot Median unless noted otherwise).
(Reinforcement shown for South bridge approach pavement. North approach pavement similar).

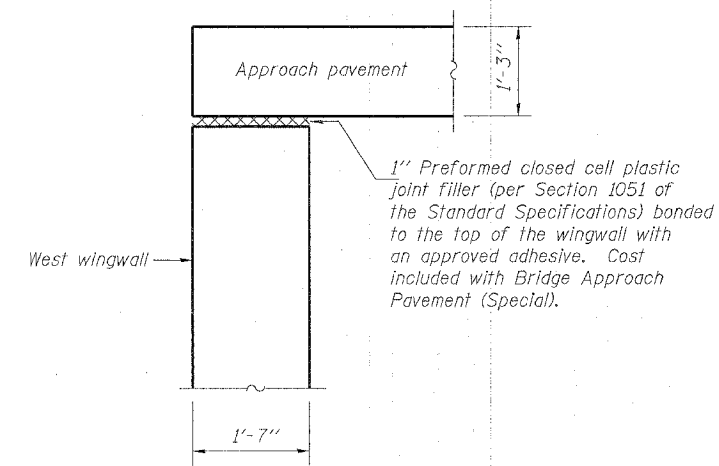


* Measured along the flare.

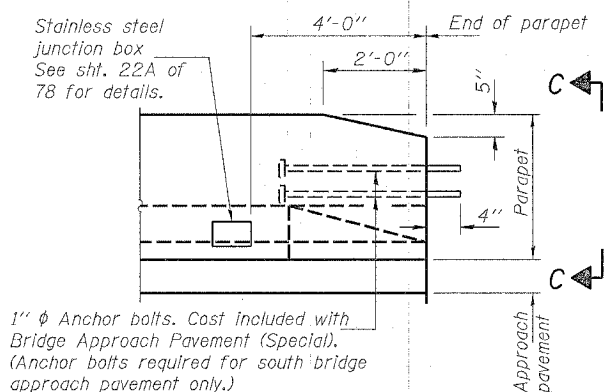


DETAIL A

(North bridge approach pavement shown;
South bridge approach pavement similar.)

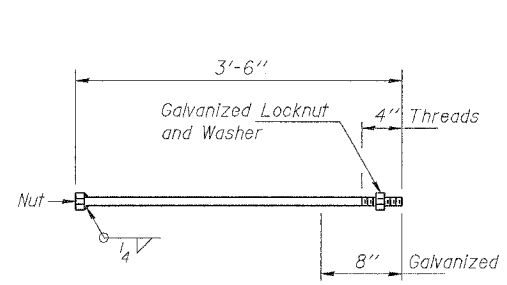


SECTION A-A

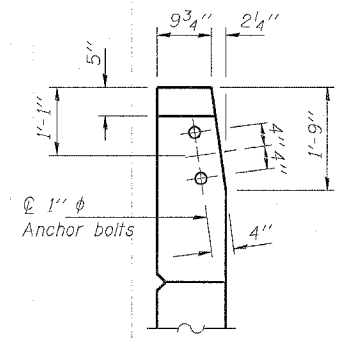


SECTION B-B

(South bridge approach pavement shown;
North bridge approach pavement similar.)



1" ϕ ANCHOR BOLT



VIEW C-C

Notes: See Standard 420401 for additional bridge approach pavement details not shown on sheets 66 & 67 of 78. For quantity of bridge approach pavement (Special), see roadway plans.
Work this sheet with sheet 67 of 78.
See expansion joint details on sheet 24 thru 30 of 78 for end treatment of concrete parapets at expansion joints.
See sheet 32 of 78 for railing details.

DESIGNED	EXAMINED
CHECKED	ENGINEER OF BRIDGE DESIGN
DRAWN	PASSED
CHECKED	ENGINEER OF BRIDGES AND STRUCTURES