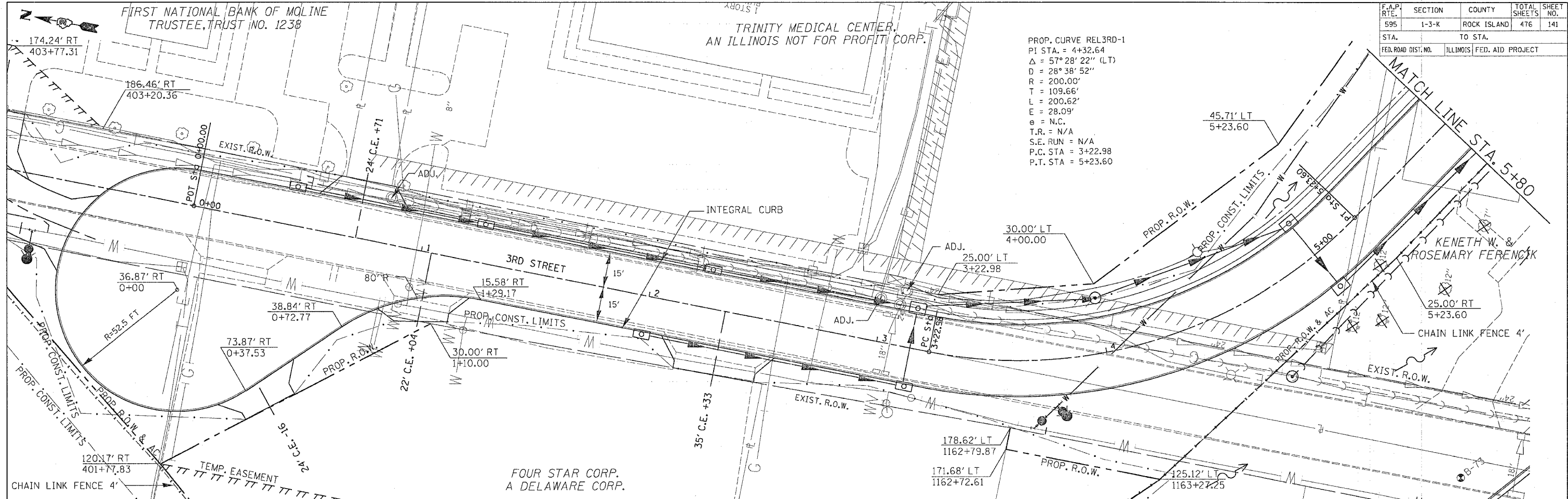


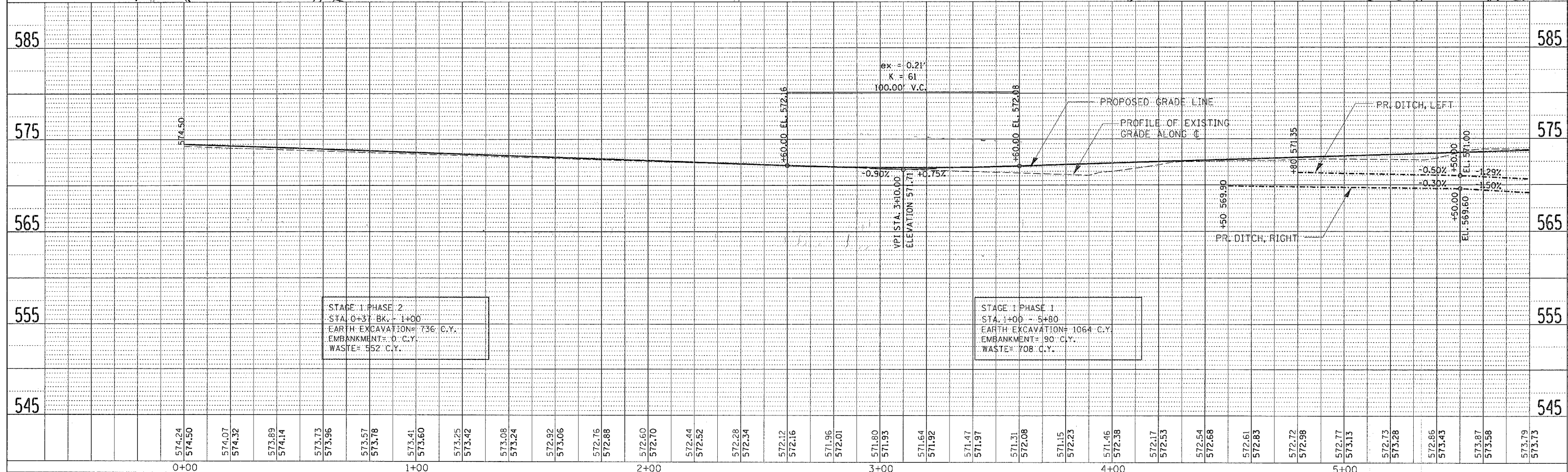
F.A.P. RTE.	SECTION	COUNTY	TOTAL SHEETS	SHEET NO.
595	1-3-K	ROCK ISLAND	476	141
STA. TO STA.		ILLINOIS FED. AID PROJECT		



PROP. CURVE REL3RD-1
 PI STA. = 4+32.64
 $\Delta = 57^\circ 28' 22''$ (LT)
 $D = 28^\circ 38' 52''$
 $R = 200.00'$
 $T = 109.66'$
 $L = 200.62'$
 $E = 28.09'$
 $e = N.C.$
 $T.R. = N/A$
 $S.E. RUN = N/A$
 $P.C. STA = 3+22.98$
 $P.T. STA = 5+23.60$

DATE	BY	REVISION

DATE	BY	REVISION



STAGE 1 PHASE 2
 STA. 0+31 - BK. 1+00
 EARTH EXCAVATION= 736 C.Y.
 EMBANKMENT= 0 C.Y.
 WASTE= 552 C.Y.

STAGE 1 PHASE 1
 STA. 1+00 - 5+80
 EARTH EXCAVATION= 1064 C.Y.
 EMBANKMENT= 90 C.Y.
 WASTE= 708 C.Y.

3RD STREET - STA. 0+00 TO STA. 5+80