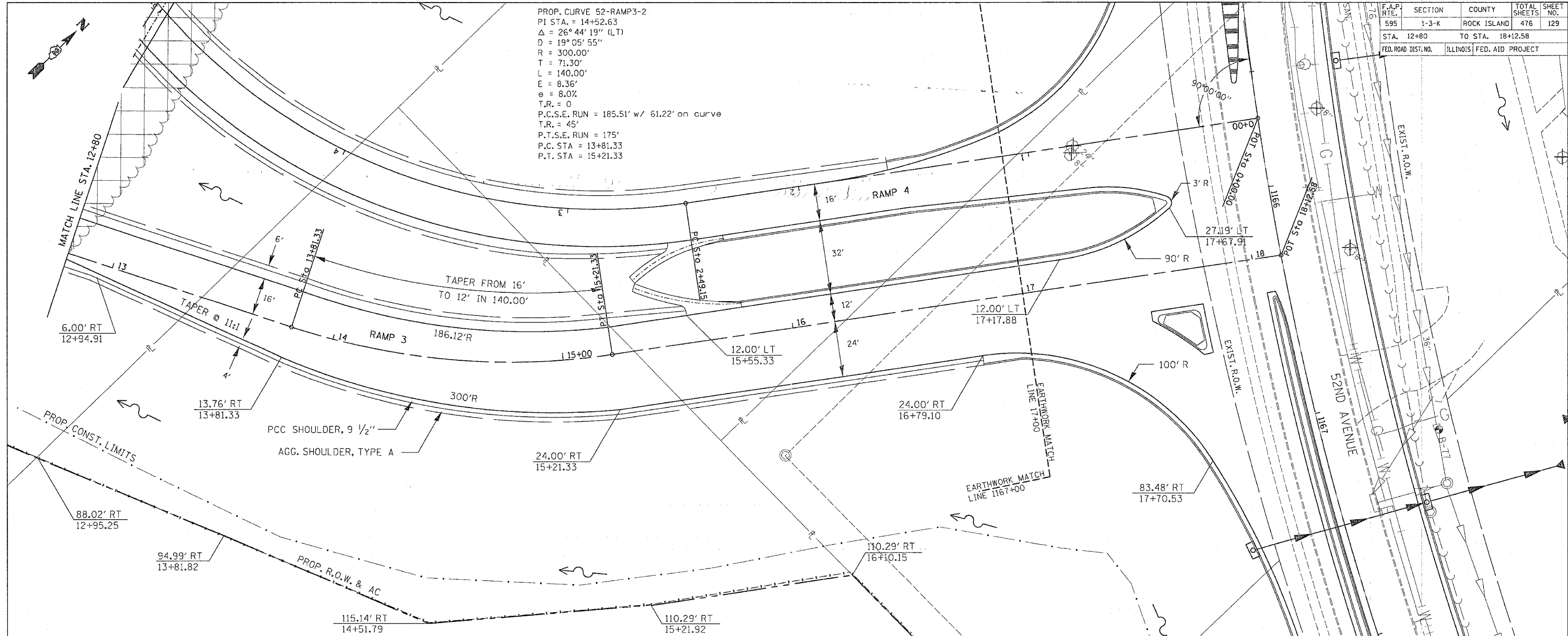


F.A.P. RTE.	SECTION	COUNTY	TOTAL SHEETS	SHEET NO.
595	1-3-K	ROCK ISLAND	476	129
STA. 12+80		TO STA. 18+12.58		
FED. ROAD DIST. NO.		ILLINOIS FED. AID PROJECT		

PROP. CURVE S2-RAMP3-2
 PI STA. = 14+52.63
 $\Delta = 26^\circ 44' 19''$ (LT)
 $D = 19^\circ 05' 55''$
 $R = 300.00'$
 $T = 71.30'$
 $L = 140.00'$
 $E = 8.36'$
 $e = 8.0\%$
 $T.R. = 0$
 $P.C.S.E. RUN = 185.51' w/ 61.22' on curve$
 $T.R. = 45'$
 $P.T.S.E. RUN = 175'$
 $P.C. STA = 13+81.33$
 $P.T. STA = 15+21.33$

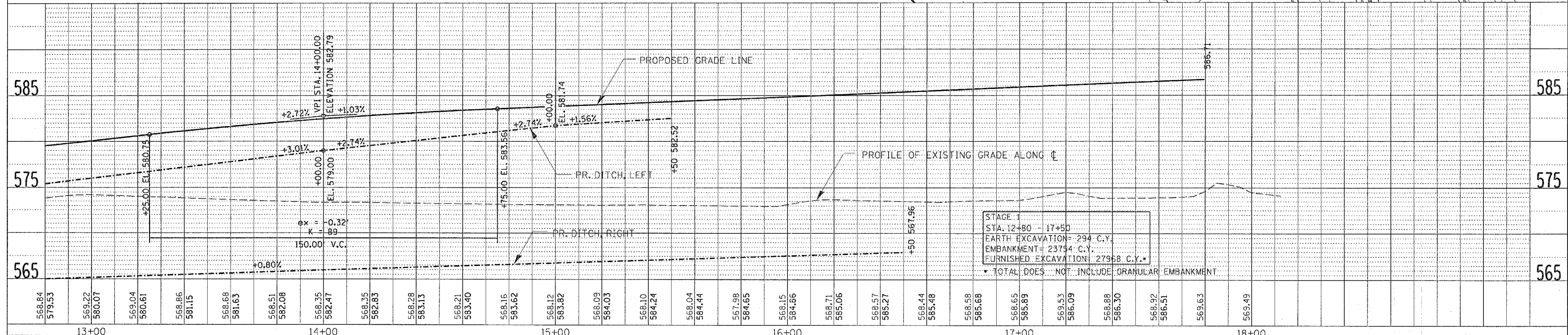


PLAN

DATE	
BY	
CHECKED	
NOTED	
FILE NO.	

PROFILE

DATE	
BY	
CHECKED	
NOTED	
FILE NO.	



STAGE
 STA. 12+80 - 17+50
 EARTH EXCAVATION = 294 C.Y.
 EMBANKMENT = 23754 C.Y.
 FURNISHED EXCAVATION = 27968 C.Y.
 * TOTAL DOES NOT INCLUDE GRANULAR EMBANKMENT