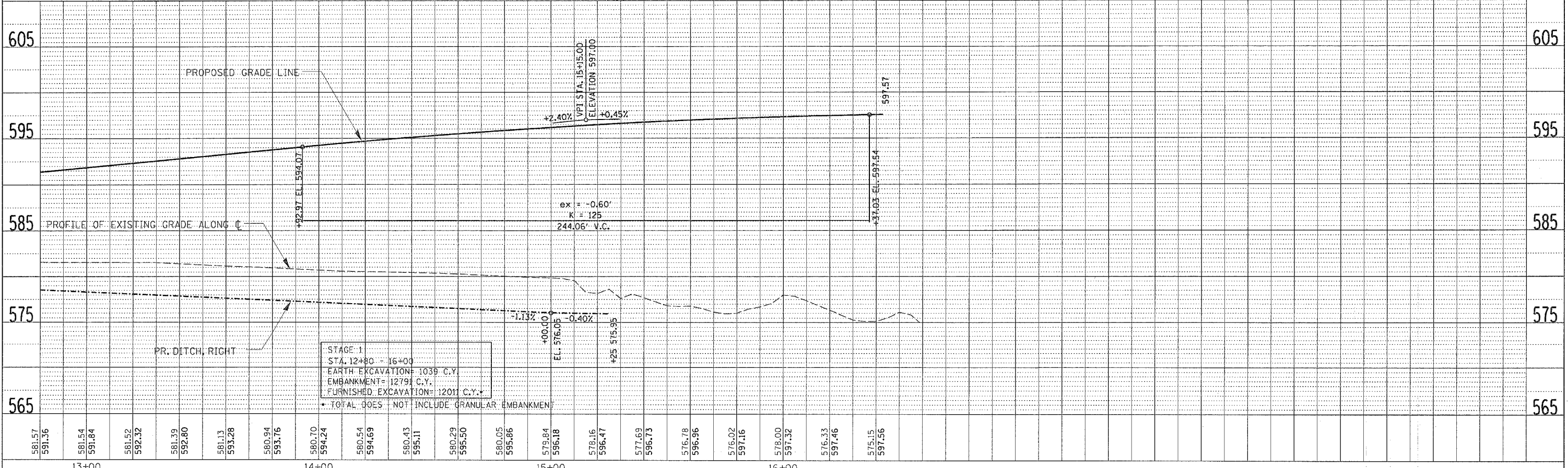
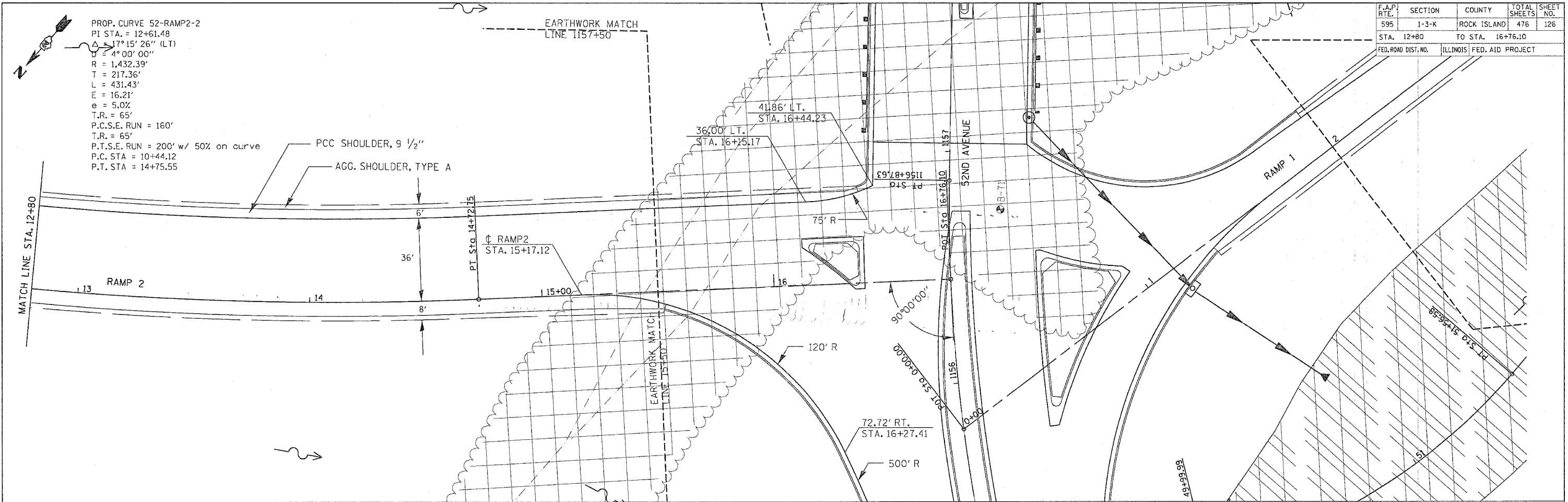


F.A.P. RTE.	SECTION	COUNTY	TOTAL SHEETS	SHEET NO.
595	1-3-K	ROCK ISLAND	476	126
STA. 12+80		TO STA. 16+76.10		
FED. ROAD DIST. NO.		ILLINOIS FED. AID PROJECT		

PROP. CURVE 52-RAMP2-2
 PI STA. = 12+61.48
 $\Delta = 17^\circ 15' 26''$ (LT)
 $\Delta = 4^\circ 00' 00''$
 $R = 1,432.39'$
 $T = 217.36'$
 $L = 431.43'$
 $E = 16.21'$
 $e = 5.0\%$
 $T.R. = 65'$
 $P.C.S.E. RUN = 160'$
 $T.R. = 65'$
 $P.T.S.E. RUN = 200'$ w/ 50% on curve
 $P.C. STA = 10+44.12$
 $P.T. STA = 14+75.55$

DATE	BY

DATE	BY



52ND AVENUE RAMP 2 - STA. 12+80 TO STA. 16+76.10