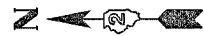


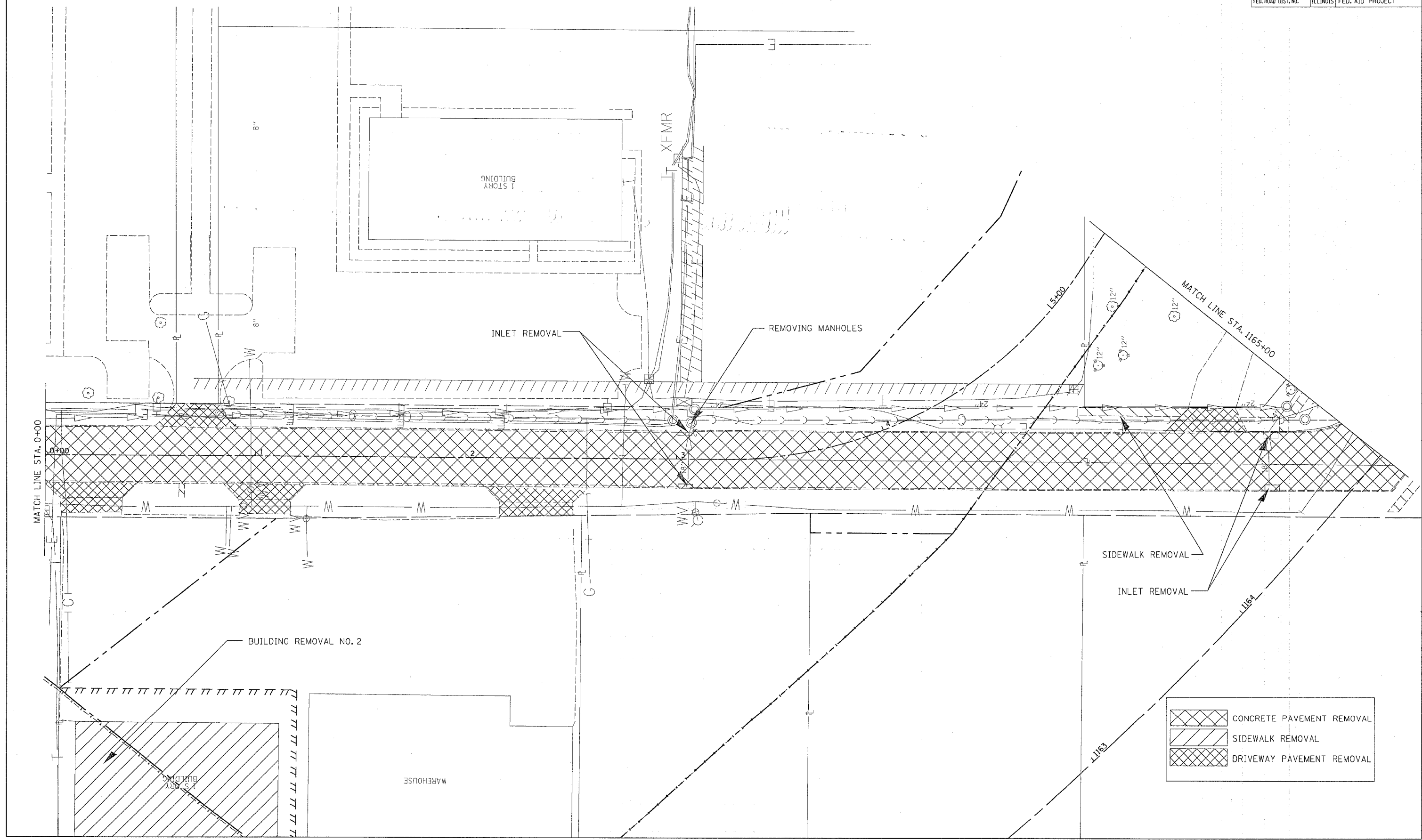
F.A.P. RTE.	SECTION	COUNTY	TOTAL SHEETS	SHEET NO.
595	1-3-K	ROCK ISLAND	476	94
STA. 412+00		TO STA. 417+10.16		
FED. ROAD DIST. NO.		ILLINOIS FED. AID PROJECT		

PAVEMENT REMOVAL



PLAN	DESIGNED	DATE
	ALIGNED	
	CHECKED	
	NOTED	
	FILED	
	NO.	

PROFILE	DESIGNED	DATE
	GRADES	
	CHECKED	
	STRUCTURE	
	NOTATIONS	
	CHECKED	
	NO.	



	CONCRETE PAVEMENT REMOVAL
	SIDWALK REMOVAL
	DRIVEWAY PAVEMENT REMOVAL