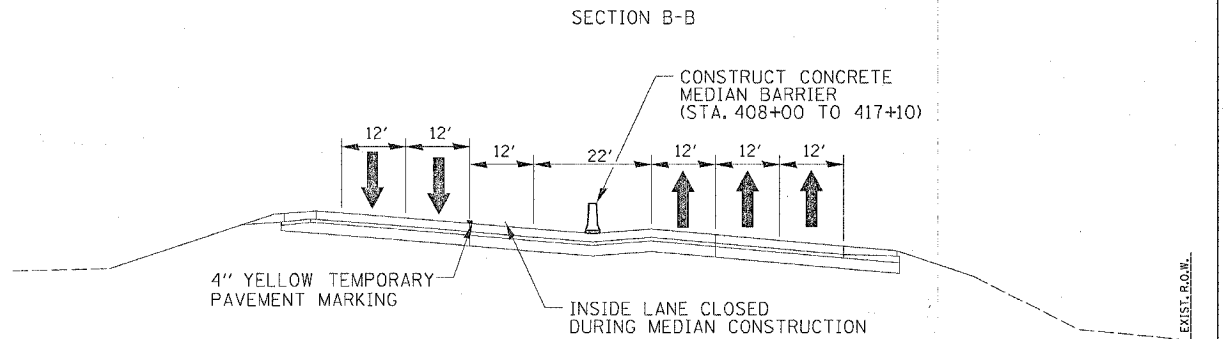
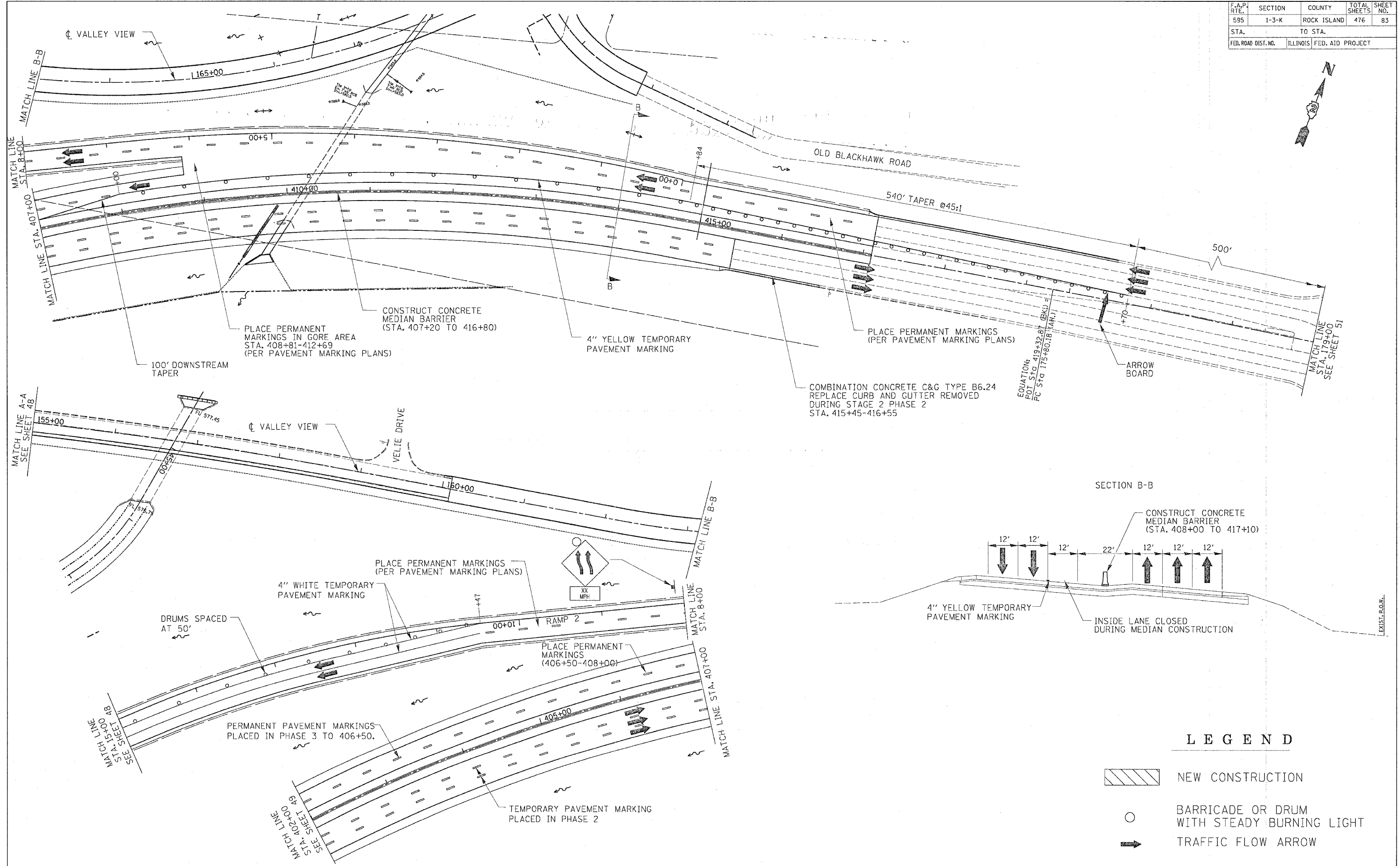
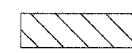




F.A.P. RTE.	SECTION	COUNTY	TOTAL SHEETS	SHEET NO.
595	1-3-K	ROCK ISLAND	476	83
STA.		TO STA.		
FED. ROAD DIST. NO.		ILLINOIS FED. AID PROJECT		



**LEGEND**

-  NEW CONSTRUCTION
-  BARRICADE OR DRUM WITH STEADY BURNING LIGHT
-  TRAFFIC FLOW ARROW