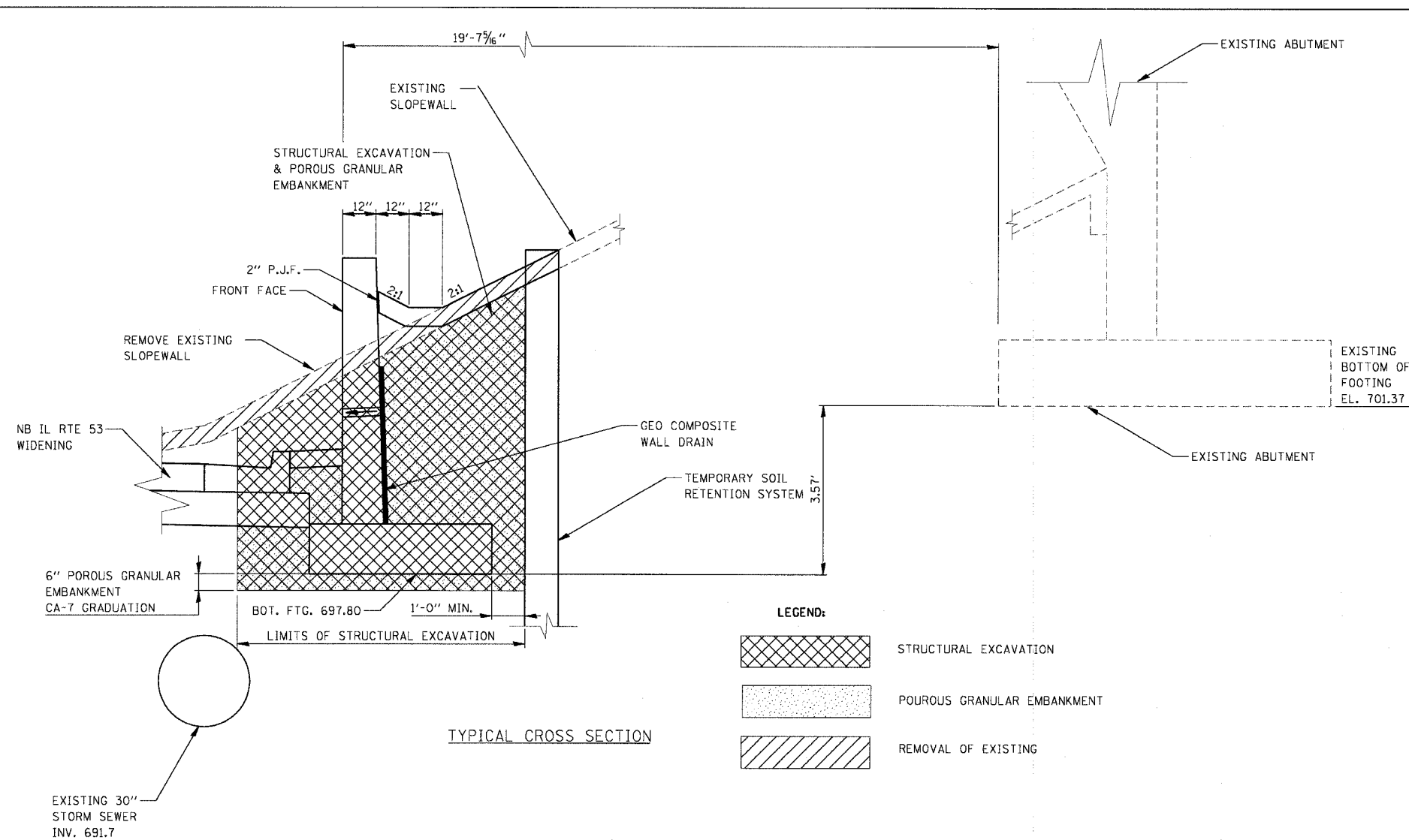
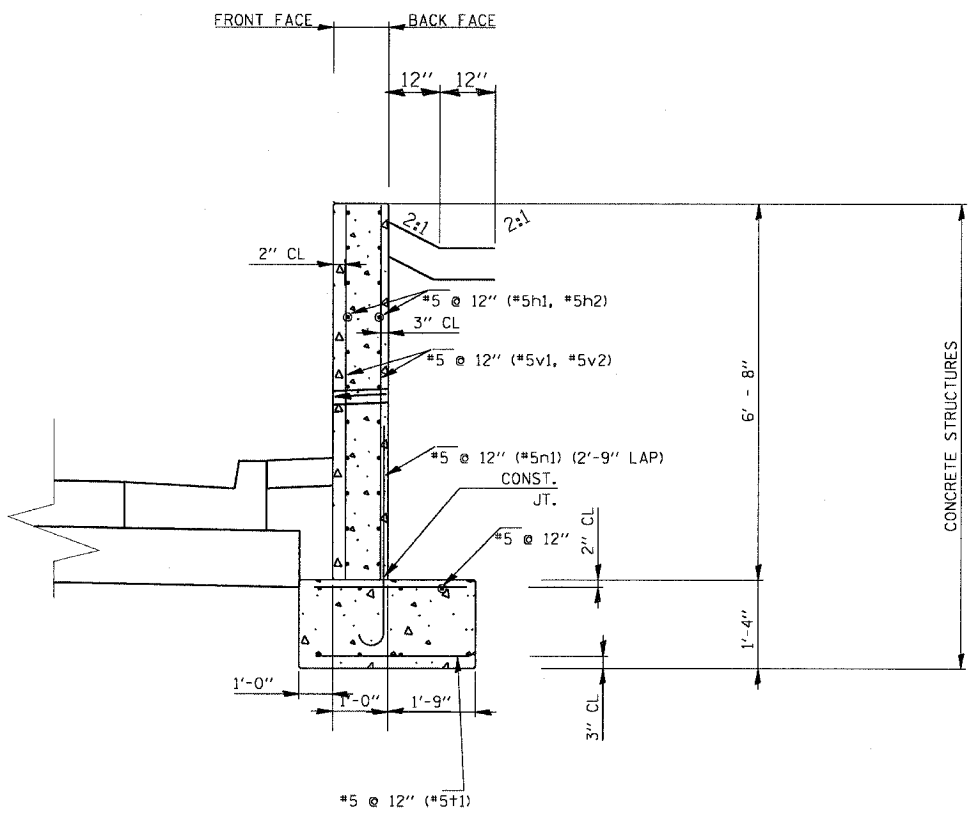


F.A.I. RTE.	SECTION	COUNTY	TOTAL SHEETS	SHEET NO.
55	2002-022 K	WILL	172	150
STA. 10+00		TO STA. 22+96.05		
FED. ROAD DIST. NO.	ILLINOIS FED. AID PROJECT			
CONTRACT NO. 62389				



**LEGEND:**

	STRUCTURAL EXCAVATION
	POUROS GRANULAR EMBANKMENT
	REMOVAL OF EXISTING



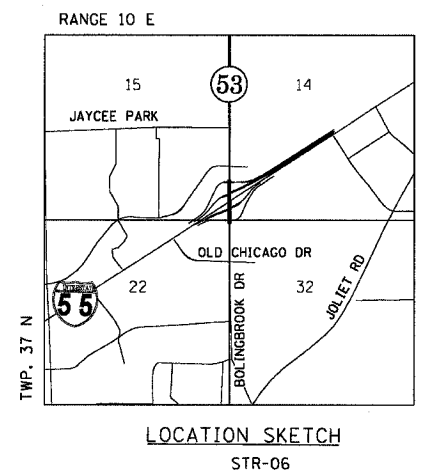
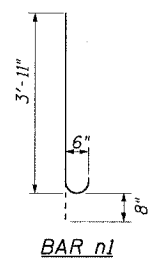
RETAINING WALL STA. 221+57 TO STA. 222+85.45 FRONTAGE ROAD  
ALLOWABLE SOIL BEARING PRESSURE: 5.2 KSF  
MAXIMUM APPLIED BEARING PRESSURE: 2.1 KSF

DATE	
BY	
PLAN	
SURVEYED	
NOTES	
NO.	
FILE	
NO.	
FILE	
NO.	
FILE	

DATE	
BY	
PROFILE	
SURVEYED	
NOTES	
NO.	
FILE	
NO.	
FILE	
NO.	
FILE	

**\* NOTE 1:**  
THE CONTRACTOR SHALL DETERMINE IN THE FIELD THE ACTUAL LENGTH OF THE REINFORCEMENT BAR NEEDED AND CUT THE REINFORCEMENT TO THE NECESSARY LENGTH. AFTER CUTTING REINFORCEMENT BAR, THE CONTRACTOR SHALL CLEAN AND PAINT (IN ACCORDANCE WITH ARTICLE 508.07) REINFORCEMENT BAR ENDS WITH EPOXY PAINT TO SUFFICIENTLY COVER BAR ENDS. NO ADDITIONAL PAYMENT WILL BE ALLOWED FOR THIS WORK AND SHALL BE INCLUDED IN THE CONTRACT UNIT BID PRICE FOR REINFORCEMENT BARS, EPOXY COATED.

BAR SCHEDULE					
BAR	No.	SIZE	LENGTH	SHAPE	LOCATION
h1	12	#5	29'-9"	—	Panel 1
h2	60	#5	24'-9"	—	Panels 2-6
v1	60	#5	6'-6"	—	Panel 1
v2	250	#5	6'-6"	—	Panels 2-6
n1	130	#5	4'-7"	U	Laps
f1	312	#5	3'-6"	—	Top & Bot. of Footing
w1	6	#5	30'-9"	—	Panel 1 Footing
w2	30	#5	24'-9"	—	Panels 2-6 footing
exp bolt	45	1" Dia.			



REVISIONS	
NAME	DATE

ILLINOIS DEPARTMENT OF TRANSPORTATION  
IL ROUTE 53 RETAINING WALL  
STA 1460+45 TO STA 1462+00  
SCALE: N.T.S.  
DATE: 11/8/2004  
DRAWN BY: RI  
CHECKED BY: RI

**DMJM HARRIS**  
303 East Wacker Drive, Suite 600  
Chicago, Illinois, 60601 Phone: 312.321.6101 Fax: 312.396.2392