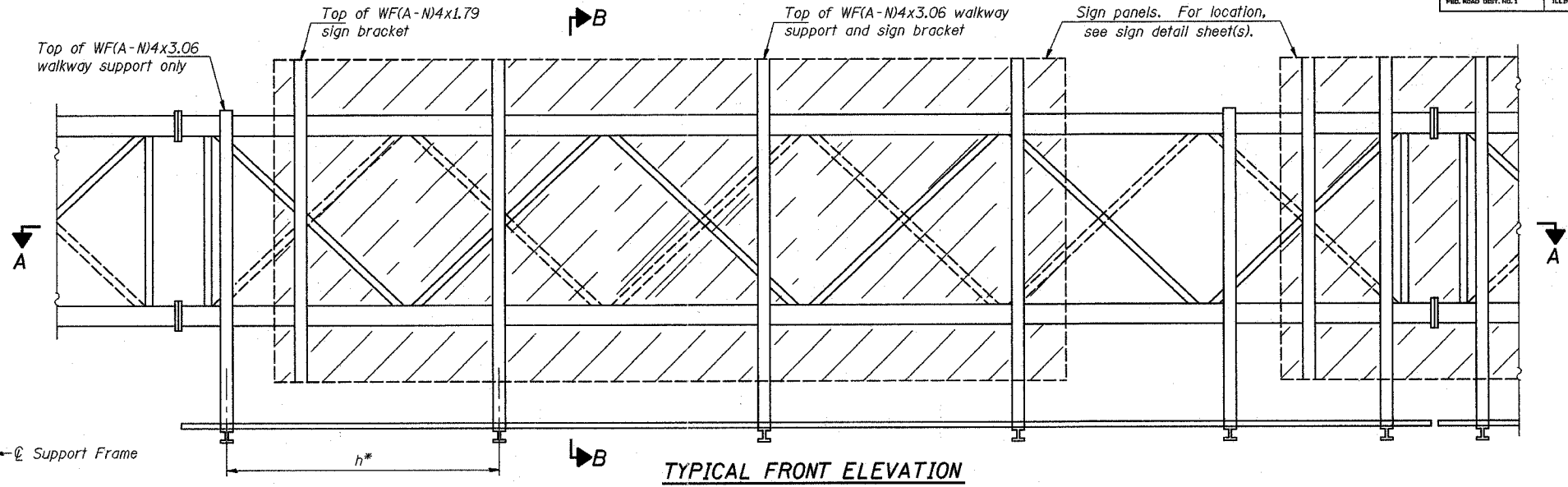
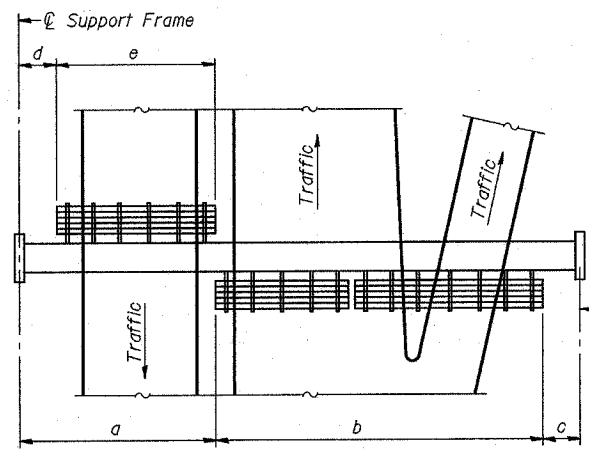


STATE OF ILLINOIS
DEPARTMENT OF TRANSPORTATION

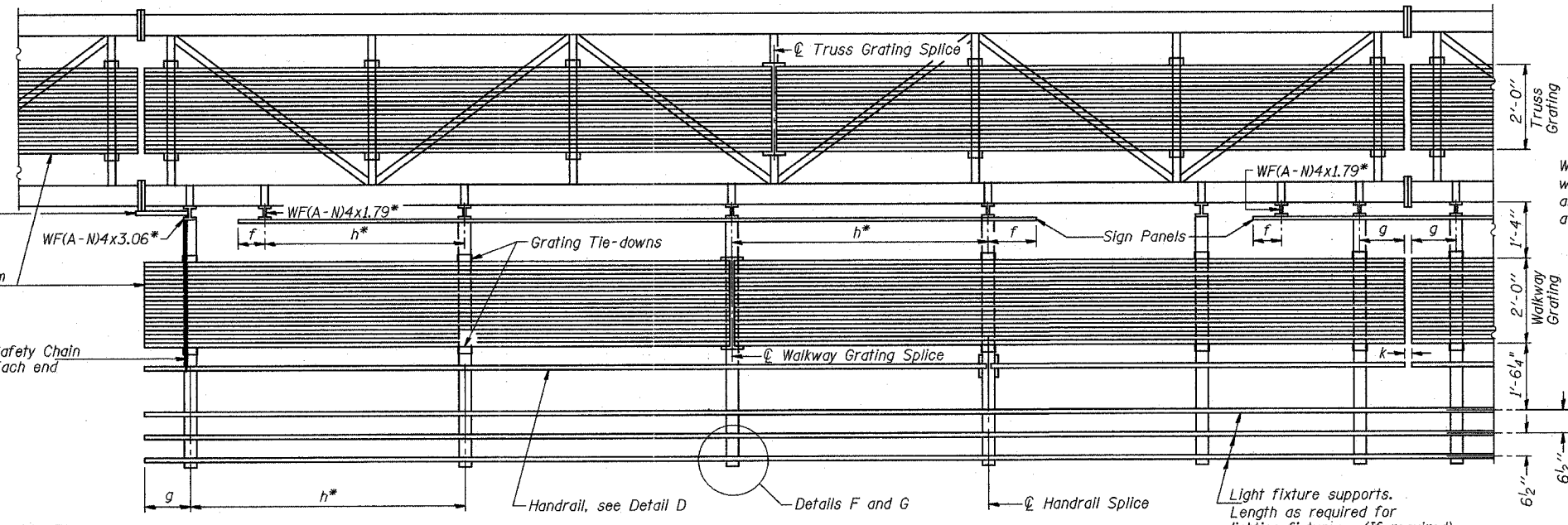
| ROUTE NO. | SECTION | COUNTY | SHEET NO. | TOTAL SHEETS |
|-----------------------|------------|------------|------------------|--------------|
| 55 | 2002-022 K | WILL | 172 | 114 |
| FED. ROAD DIST. NO. 1 | | ALL PHASES | FED. AID PROJECT | |



TYPICAL FRONT ELEVATION
With lights and handrail omitted for clarity.
For Section B-B, see Base Sheet OS-A-10.



PLAN
WALKWAY AND HANDRAIL SKETCH
(Road plan beneath truss varies)



Walkway and Truss Grating width dimensions are nominal and may vary ±1/2" based on available standard widths.

BRACKET TABLE

| Sign Width | | Number Brackets Required |
|--------------|-----------------------|--------------------------|
| Greater Than | Less Than or Equal To | |
| | 8'-0" | 2 |
| 8'-0" | 14'-0" | 3 |
| 14'-0" | 20'-0" | 4 |
| 20'-0" | 26'-0" | 5 |
| 26'-0" | 32'-0" | 6 |

**Alternate angle for safety chain attachment
Standard Aluminum Grating, see Details T and W
Safety Chain Each end

Notes: *Space walkway brackets WF(A-N)4x3.06 and sign brackets WF(A-N)4x1.79 for efficiency and within limits shown:

- f = 12" maximum, 4" minimum (End of sign to center of nearest bracket)
- g = 12" maximum, 4" minimum (End of walkway grating to center of nearest support bracket)
- h = 6'-0" maximum (center to center of sign and/or walkway support brackets, WF(A-N)4x1.79 or WF(A-N)4x3.06)
- k = 2" maximum gap between adjacent walkway grating sections and handrail ends

**If walkway bracket at safety chain location is behind sign, add angle to bracket, see Alternate Safety Chain Attachment on Base Sheet OS-A-11.

For Details T and W, Section B-B and Grating Splice Details, see Base Sheet OS-A-10.
For Details D, F, G and P and Handrail Splice Details, see Base Sheet OS-A-11.

SECTION A-A
Handrail and walkway shall span a minimum of three brackets between splices and/or gap joints. Place all sign and walkway brackets as close to panel points as practical. Grating, handrail and light support splices placed as needed.

Truss grating to facilitate inspection shall run full length (center to center of support frames) ±12" on overhead trusses. Cost of truss grating is included in "Overhead Sign Structure".

| Structure Number | Station | a | b | c | d | e | Walkway Grating and Handrail Lengths |
|------------------|----------|--------|--------|--------|---|---|--------------------------------------|
| IS0991055L268.0 | 511+61.2 | 15'-0" | 40'-0" | 25'-0" | | | 40'-0" |
| | | | | | | | |
| | | | | | | | |
| | | | | | | | |
| | | | | | | | |
| | | | | | | | |
| | | | | | | | |
| | | | | | | | |
| | | | | | | | |

| | |
|----------|----|
| DESIGNED | SL |
| CHECKED | AS |
| DRAWN | MD |
| CHECKED | SL |

| | |
|----------|------------------------------------|
| EXAMINED | 20 |
| PASSED | ENGINEER OF STRUCTURAL SERVICES |
| | ENGINEER OF BRIDGES AND STRUCTURES |

| NUMBER | REVISION | DATE |
|--------|----------|------|
| | | |
| | | |
| | | |
| | | |
| | | |

SGN-13

**OVERHEAD SIGN STRUCTURES
ALUMINUM WALKWAY DETAILS**

ILLINOIS DEPARTMENT OF TRANSPORTATION
I-55 (STEVENSON EXPY.) AT ILL. RTE. 53

OVERHEAD SIGN STRUCTURES