
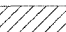

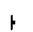



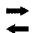


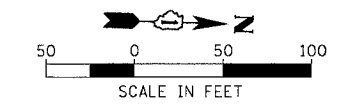
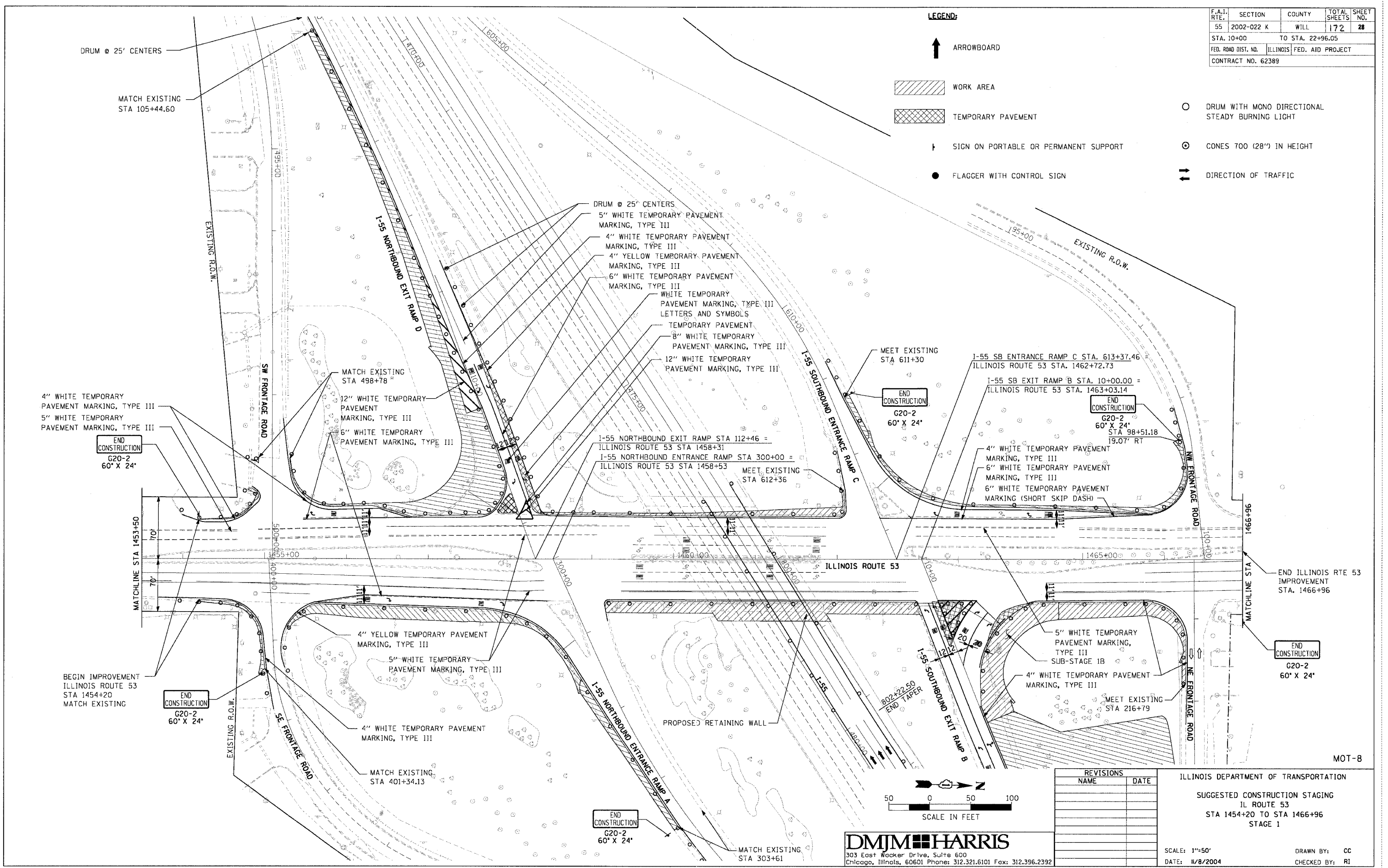
F.A.I. RTE.	SECTION	COUNTY	TOTAL SHEETS	SHEET NO.
55	2002-022 K	WILL	172	28
STA. 10+00		TO STA. 22+96.05		
FED. ROAD DIST. NO.		ILLINOIS	FED. AID PROJECT	
CONTRACT NO. 62389				

LEGEND:

-  ARROWBOARD
-  WORK AREA
-  TEMPORARY PAVEMENT
-  SIGN ON PORTABLE OR PERMANENT SUPPORT
-  FLAGGER WITH CONTROL SIGN
-  DRUM WITH MONO DIRECTIONAL STEADY BURNING LIGHT
-  CONES 700 (28") IN HEIGHT
-  DIRECTION OF TRAFFIC

PLAN	SURVEYED	DATE
	BY	
	PLOTTED	
	BY	
	NOTE BOOK	
	NO. OF WAY CHECKED	
	DATE	
	FILE NAME	

PROFILE	SURVEYED	DATE
	BY	
	PLOTTED	
	BY	
	NOTE BOOK	
	NO. OF NOTED	
	STRUCTURE NOTATIONS CHD	
	NO.	



REVISIONS	
NAME	DATE

ILLINOIS DEPARTMENT OF TRANSPORTATION

SUGGESTED CONSTRUCTION STAGING
 IL ROUTE 53
 STA 1454+20 TO STA 1466+96
 STAGE 1

SCALE: 1"=50'
 DATE: 11/8/2004

DRAWN BY: CC
 CHECKED BY: RI

DMJM HARRIS
 303 East Wacker Drive, Suite 600
 Chicago, Illinois, 60601 Phone: 312.321.6101 Fax: 312.396.2392