
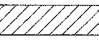


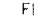





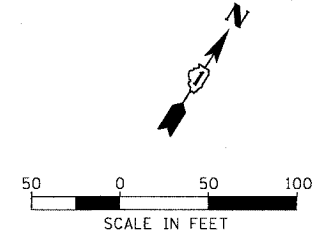
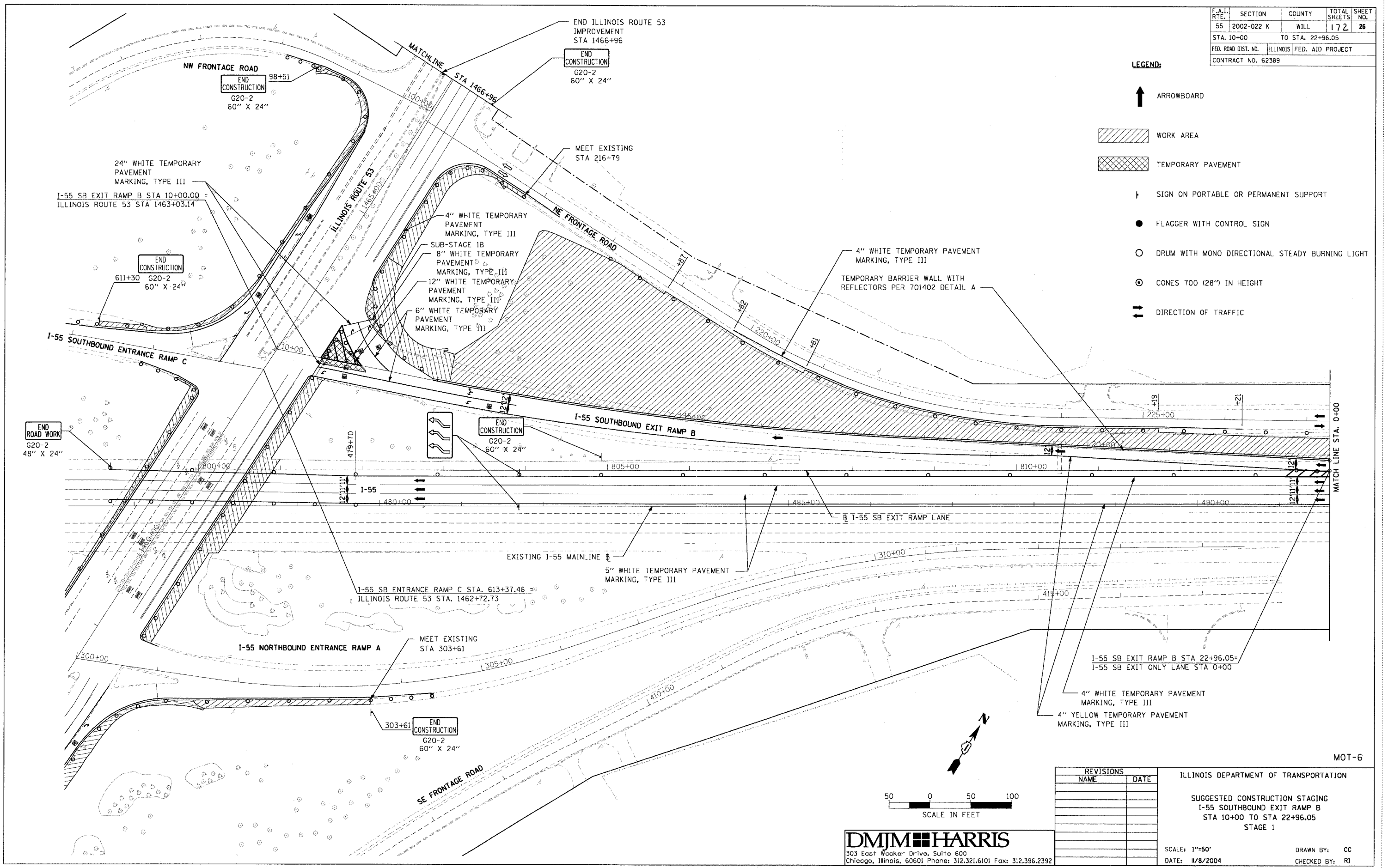
F.A.I. RTE.	SECTION	COUNTY	TOTAL SHEETS	SHEET NO.
55	2002-022 K	WILL	172	26
STA. 10+00		TO STA. 22+96.05		
FED. ROAD DIST. NO.		ILLINOIS FED. AID PROJECT		
CONTRACT NO. 62389				

LEGEND:

-  ARROWBOARD
-  WORK AREA
-  TEMPORARY PAVEMENT
-  SIGN ON PORTABLE OR PERMANENT SUPPORT
-  FLAGGER WITH CONTROL SIGN
-  DRUM WITH MONO DIRECTIONAL STEADY BURNING LIGHT
-  CONES 700 (28") IN HEIGHT
-  DIRECTION OF TRAFFIC

DATE	BY
DATE	BY
DATE	BY

DATE	BY
DATE	BY
DATE	BY



DMJM HARRIS
303 East Wacker Drive, Suite 600
Chicago, Illinois, 60601 Phone: 312.321.6101 Fax: 312.396.2392

REVISIONS	
NAME	DATE

ILLINOIS DEPARTMENT OF TRANSPORTATION
MOT-6

SUGGESTED CONSTRUCTION STAGING
I-55 SOUTHBOUND EXIT RAMP B
STA 10+00 TO STA 22+96.05
STAGE 1

SCALE: 1"=50'
DATE: 11/8/2004

DRAWN BY: CC
CHECKED BY: RI