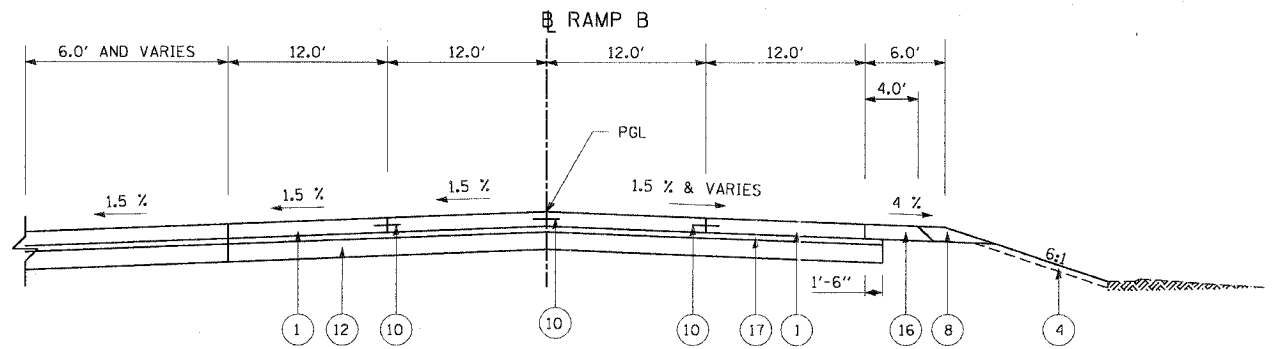


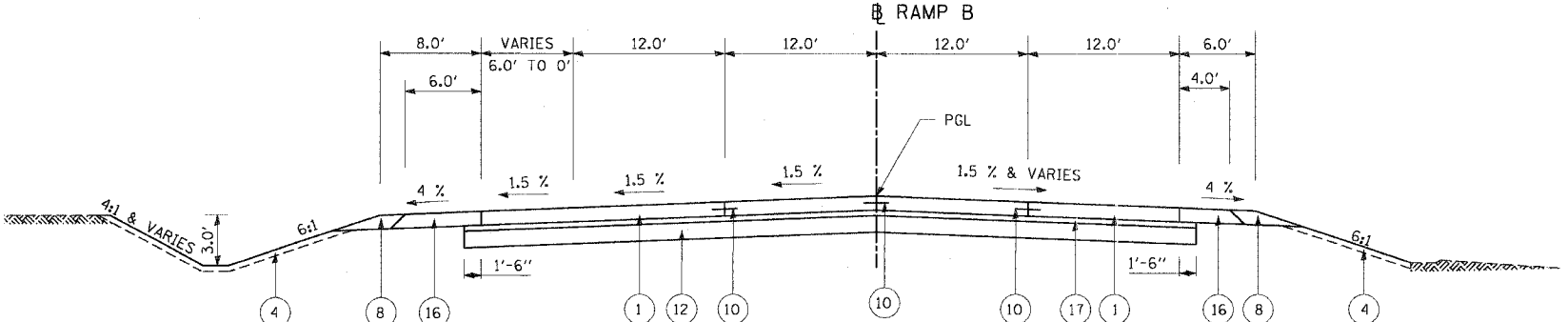
F.A.I. RTE.	SECTION	COUNTY	TOTAL SHEETS	SHEET NO.
55	2002-022 K	WILL	172	14
STA. 10+00	TO STA. 22+96.05			
FED. ROAD DIST. NO.	ILLINOIS	FED. AID PROJECT		
CONTRACT NO. 62389				

PLAN	DATE	BY
NO.		
NO.		
NO.		
NO.		

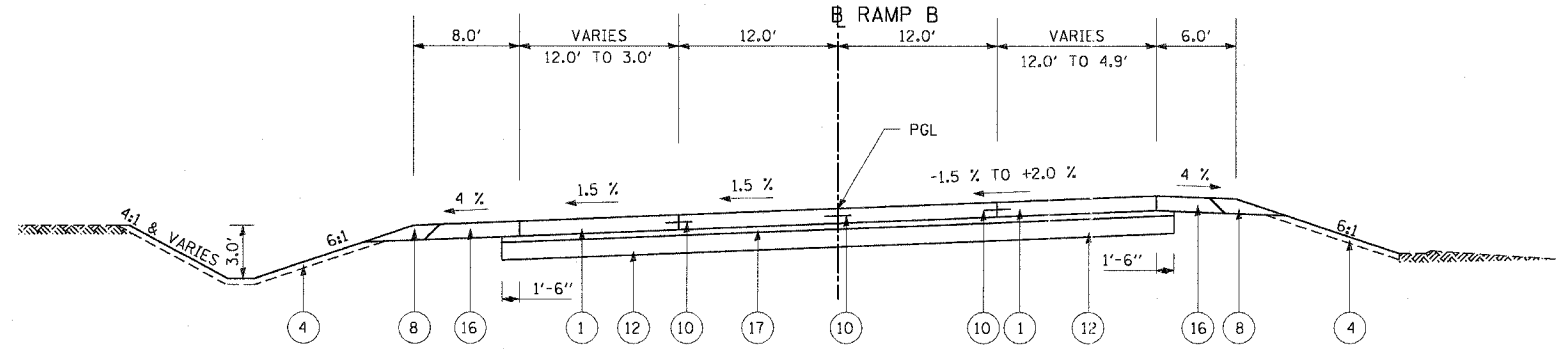
PROFILE	DATE	BY
NO.		
NO.		
NO.		
NO.		



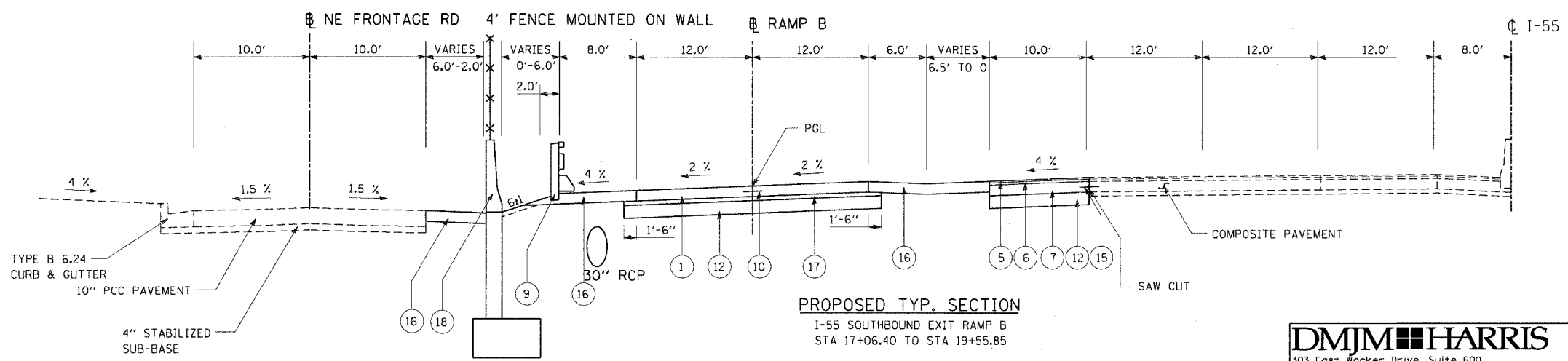
PROPOSED TYP. SECTION
I-55 SOUTHBOUND EXIT RAMP B
STA 10+75 TO STA11+99.85



PROPOSED TYP. SECTION
I-55 SOUTHBOUND EXIT RAMP B
STA 11+99.85 TO STA 12+92.55



PROPOSED TYP. SECTION
I-55 SOUTHBOUND EXIT RAMP B
STA 12+92.55 TO STA 17+06.40



PROPOSED TYP. SECTION
I-55 SOUTHBOUND EXIT RAMP B
STA 17+06.40 TO STA 19+55.85

LEGEND:

- ① 10" PCC PAVEMENT (JOINTED)
- ② COMBINATION CURB & GUTTER, TYPE B.6-24
- ③ TOPSOIL FURNISH & PLACE, 12"
- ④ 4" PROPOSED FURNISHING & PLACING TOPSOIL WITH SEEDING
- ⑤ 1 3/4" POLYMERIZED BITUMINOUS CONCRETE SURFACE COURSE, SUPERPAVE, MIX "F" N105
- ⑥ 2 1/4" BITUMINOUS CONCRETE BINDER COURSE, SUPERPAVE, 1L-19, N105
- ⑦ 10" PCC BASE COURSE
- ⑧ 10" AGGREGATE SHOULDER, TYPE B
- ⑨ STEEL PLATE BEAM GUARDRAIL, TYPE A
- ⑩ NO. 6 TIE BARS @ 24" LONG & 24" CTS (COST INCLUDED IN COST OF PAVEMENT)
- ⑪ CONCRETE BARRIER WALL
- ⑫ AGGREGATE SUBGRADE 12"
- ⑬ 4" PCC SURFACE MEDIAN
- ⑭ B 9.12 CURB & GUTTER
- ⑮ DRILL AND GROUT #6 TIE BARS
- ⑯ BITUMINOUS SHOULDER 10" SUPERPAVE
- ⑰ 4" STABILIZED SUBBASE
- ⑱ BARRIER WALL
- ⑲ 4" PCC SIDEWALK

EXISTING - - - - -
PROPOSED - - - - -

LOCATIONS:	I-55 MAINLINE, RAMPS		
MIXTURE USES:	SURFACE	BINDER	BIT. SHOULDER
SBS/SBR PG:	76-22	76-22	76-22
RAP %: (MAX)	0 %	0 %	0 %
DESIGN AIR VOIDS:	4 % @ 105 GYR	4 % @ 105 GYR	4 % @ 105 GYR
FRICION AGGREGATE:	F	-	-

REVISIONS	
NAME	DATE

ILLINOIS DEPARTMENT OF TRANSPORTATION

EXISTING & PROPOSED
TYPICAL SECTIONS
I-55 SOUTHBOUND EXIT RAMP B

SCALE: NTS
DATE: 12/23/2004

DRAWN BY: CC
CHECKED BY: RI

DMJM HARRIS
303 East Wacker Drive, Suite 600
Chicago, Illinois, 60601 Phone: 312.321.6101 Fax: 312.396.2392