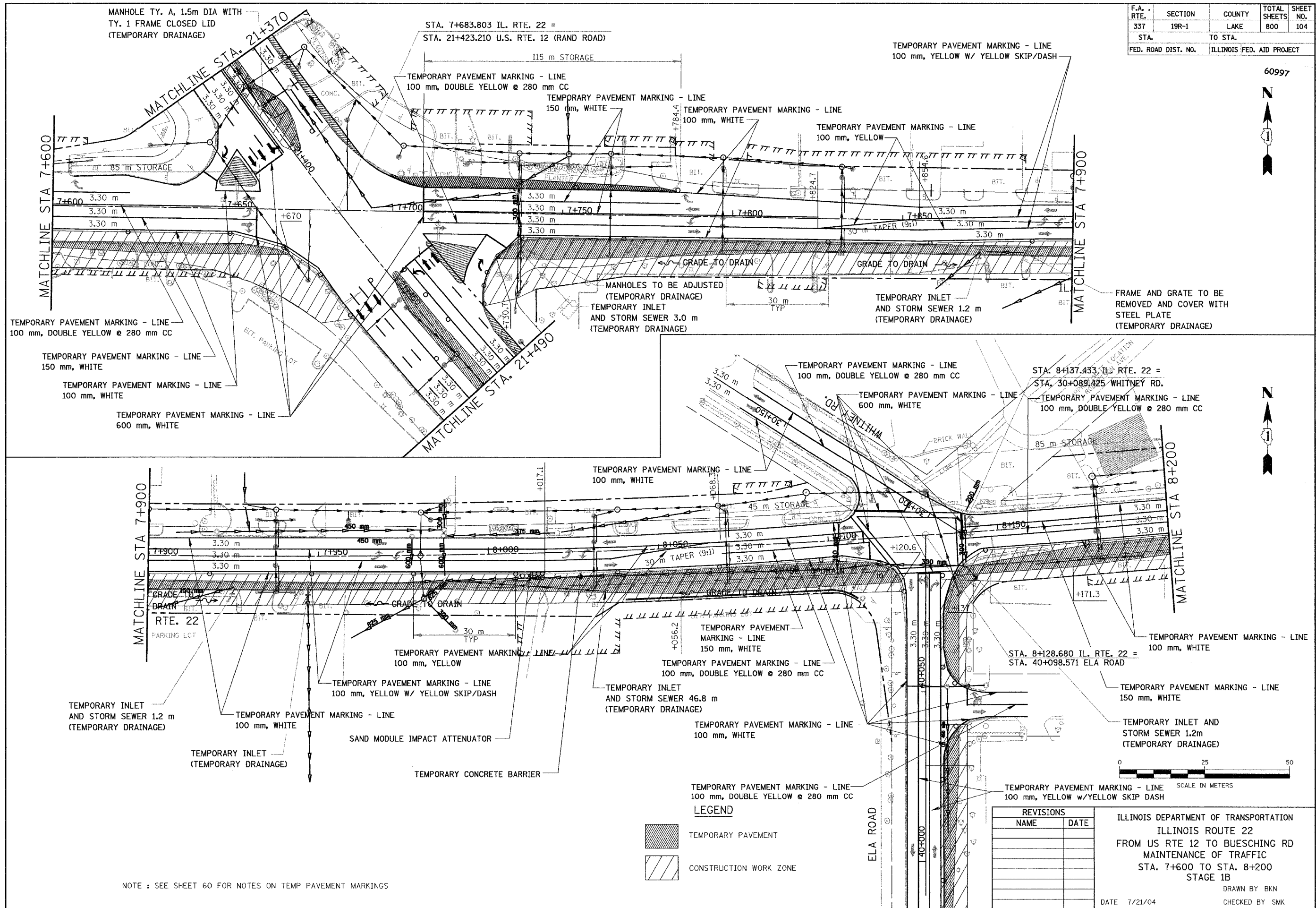


F.A. RTE.	SECTION	COUNTY	TOTAL SHEETS	SHEET NO.
337	19R-1	LAKE	800	104
STA.	TO STA.			
FED. ROAD DIST. NO.	ILLINOIS FED. AID PROJECT			

60997



TEMPORARY PAVEMENT MARKING - LINE  
100 mm, DOUBLE YELLOW @ 280 mm CC

TEMPORARY PAVEMENT MARKING - LINE  
150 mm, WHITE

TEMPORARY PAVEMENT MARKING - LINE  
100 mm, WHITE

TEMPORARY PAVEMENT MARKING - LINE  
600 mm, WHITE

**LEGEND**

TEMPORARY PAVEMENT

CONSTRUCTION WORK ZONE

NOTE : SEE SHEET 60 FOR NOTES ON TEMP PAVEMENT MARKINGS

REVISIONS	
NAME	DATE

ILLINOIS DEPARTMENT OF TRANSPORTATION  
ILLINOIS ROUTE 22  
FROM US RTE 12 TO BUESCHING RD  
MAINTENANCE OF TRAFFIC  
STA. 7+600 TO STA. 8+200  
STAGE 1B

DATE 7/21/04

DRAWN BY BKN  
CHECKED BY SMK