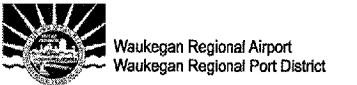




HANSON PROFESSIONAL SERVICES INC.

815 Commerce Drive, Suite 200  
Oak Brook, Illinois 60523  
Telephone: 630.990.3800  
Fax: 630.990.3801

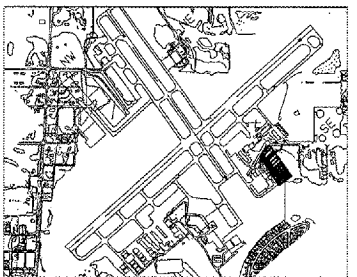


3580 North McAree Road  
Waukegan, Illinois 60087  
Phone: 847.244.0055  
Fax: 847.244.3813

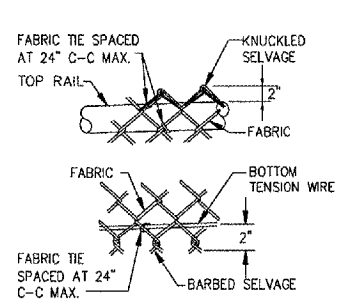
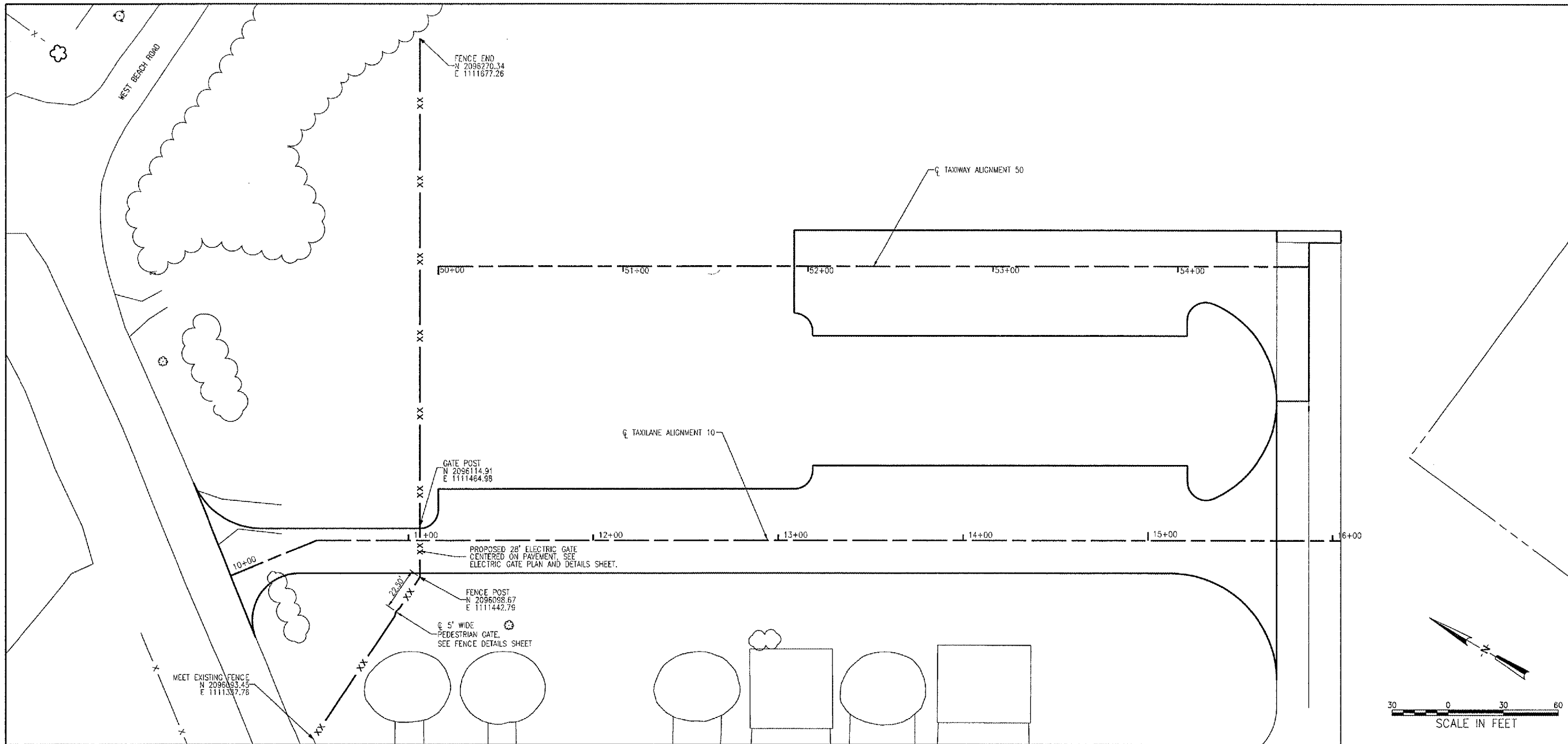
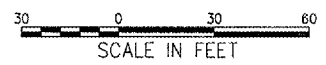
WAUKEGAN REGIONAL AIRPORT

CONSTRUCT NEW T-HANGAR  
APRONS, TAXIWAYS AND  
AUTO ACCESS

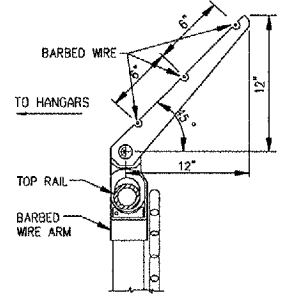
IDA PROJECT NO. UGN-3499



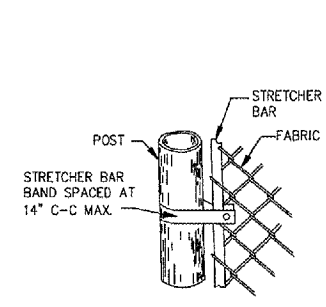
KEY MAP



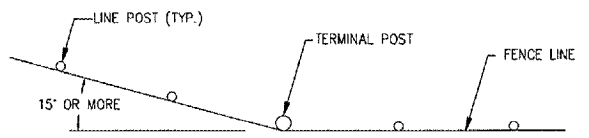
FABRIC TIES



BARBED WIRE ARM

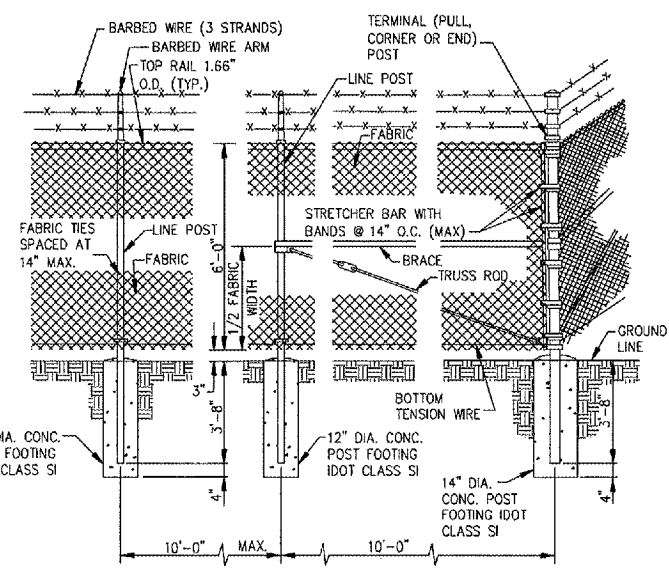


STRETCHER BAR BAND



INSTALLATION AT CORNERS

WHEN FENCE LINE HAS A CHANGE IN DIRECTION OF 15° OR MORE, A TERMINAL POST SHALL BE PLACED AS SHOWN ABOVE. WHERE ANGLE IS LESS THAN 15° AND EXISTING CONDITIONS REQUIRE A TERMINAL POST, THEY SHALL BE PLACED AS DIRECTED BY THE RESIDENT ENGINEER.



TERMINAL (PULL, CORNER OR END) POST

FENCING NOTES

- ALL FENCE, FABRIC, POSTS, GATES, TENSION WIRE, RODS, BRACES, ARMS AND MISCELLANEOUS FITTINGS SHALL BE GALVANIZED.
- BARBED WIRE FOR FENCE AND GATES SHALL BE GALVANIZED STEEL.
- FENCE AND GATE HEIGHT SHALL BE 6'-0" AS SHOWN.
- PULL POSTS SHALL BE PLACED AT LOCATIONS DETERMINED BY THE RESIDENT ENGINEER. THEY SHALL BE PLACED AT 660 FOOT INTERVALS BETWEEN POSTS TO WHICH THE ENDS OF THE FABRIC ARE CLAMPED OR MIDWAY BETWEEN SUCH POSTS WHEN THE DISTANCE IS LESS THAN 1,320 FEET AND GREATER THAN 660 FEET.
- GATE KEEPERS SHALL BE PROVIDED TO HOLD GATES IN THE OPEN POSITION. THEY SHALL BE LOCATED AND INSTALLED AS DIRECTED BY THE RESIDENT ENGINEER.
- IN LOCATIONS WHERE THE FENCE IS ALONG THE BITUMINOUS PAVEMENT EDGE THE PAVEMENT IS TO BE SAWCUT SQUARE TO ALLOW FOR PROPER INSTALLATION AND PLACEMENT OF THE FENCE POSTS AND FOUNDATION. SAWCUT COST INCIDENTAL TO FENCE.
- SEE FENCE DETAIL SHEET FOR ADDITIONAL INFORMATION.
- SEE SPECIAL PROVISIONS.

DETAILS SHOWN ARE NOT TO SCALE

No.	Drawing Issue Description	Date	By

Date: JANUARY 27, 2006  
Sheet Title: FENCE PLAN AND DETAILS

FENCE PLAN AND DETAILS

831-04TXD  
Project Number

AAP	11/15/05
Layout By	Date
AAP	11/15/05
Designed By	Date
KLK/RMH	01/23/06
Reviewed By	Date
KLK	AAP
Drawn By	Sheet No.

01/26/2006, 08:45 AM I:\04\Jobs\083193\04TXD\REV\Civil\SheetM7 Fence Plan & Details\_01.dgn AAP