



HANSON PROFESSIONAL SERVICES INC.

815 Commerce Drive, Suite 200
Oak Brook, Illinois 60523
Telephone: 630.990.3800
Fax: 630.990.3801

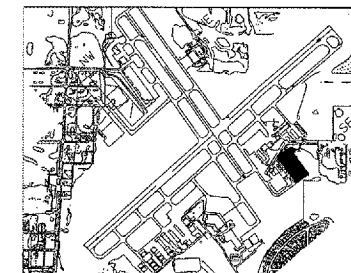


3580 North McAree Road
Waukegan, Illinois 60087
Phone: 847.244.0055
Fax: 847.244.3813

WAUKEGAN REGIONAL AIRPORT

CONSTRUCT NEW T-HANGAR APRONS, TAXIWAYS AND AUTO ACCESS

IDA PROJECT NO. UGN-3499



KEY MAP

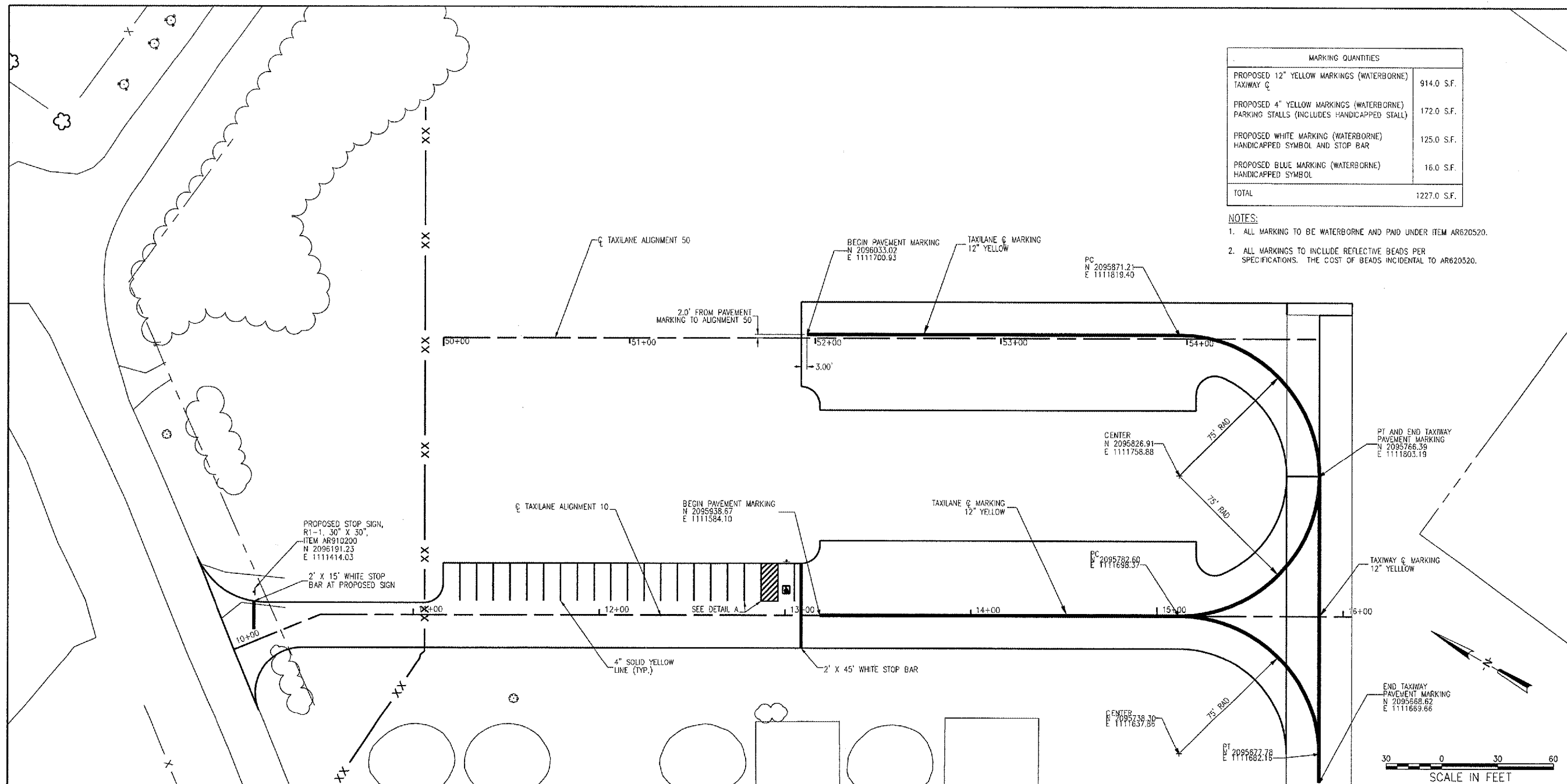
No.	Drawing Issue Description	Date	By

Date: JANUARY 27, 2006

Sheet Title

PAVEMENT MARKING AND SIGNING PLAN AND DETAILS

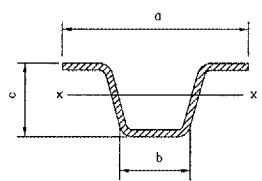
831-04TXD	Project Number
AAP	11/16/05
Layout By	Date
AAP	11/15/05
Designed By	Date
KLK/RMH	01/23/06
Reviewed By	Date
KLK	AAP
Drawn By	Sheet No.



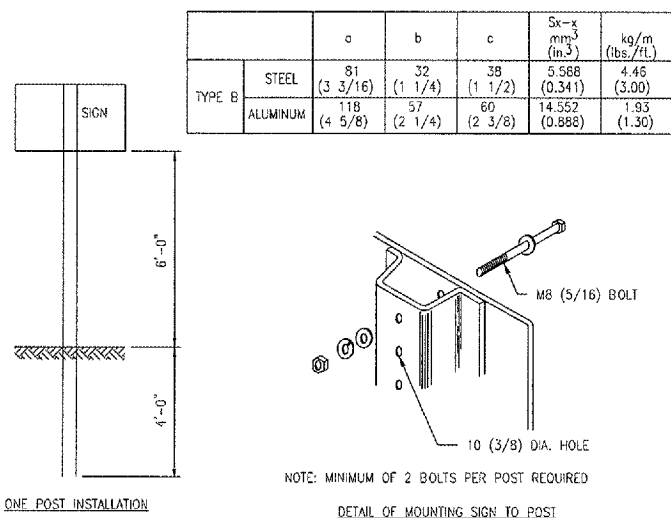
MARKING QUANTITIES	
PROPOSED 12" YELLOW MARKINGS (WATERBORNE) TAXIWAY C	914.0 S.F.
PROPOSED 4" YELLOW MARKINGS (WATERBORNE) PARKING STALLS (INCLUDES HANDICAPPED STALL)	172.0 S.F.
PROPOSED WHITE MARKING (WATERBORNE) HANDICAPPED SYMBOL AND STOP BAR	125.0 S.F.
PROPOSED BLUE MARKING (WATERBORNE) HANDICAPPED SYMBOL	16.0 S.F.
TOTAL	1227.0 S.F.

- NOTES:
- ALL MARKING TO BE WATERBORNE AND PAID UNDER ITEM AR620520.
 - ALL MARKINGS TO INCLUDE REFLECTIVE BEADS PER SPECIFICATIONS. THE COST OF BEADS INCIDENTAL TO AR620520.

- NOTES:
- DIMENSIONS FOR CROSS SECTIONS ARE MINIMUM.
 - S_{x-x} IS THE MINIMUM SECTION MODULUS ABOUT THE X-X AXIS OF THE POST AS SHOWN. FOR POST IN WHICH HOLES ARE PUNCHED OR DRILLED FOR MORE THAN HALF THEIR LENGTH, S_{x-x} SHALL BE COMPUTED FOR THE NEXT SECTION.
 - SOIL PRESSURE: MINIMUM ALLOWABLE SOIL PRESSURE = 1.25 TSF (120 KLA).
 - ALL HOLES ARE 3/8" (10mm) IN DIAMETER.
 - LOADING FOR 60 MPH (95 km/h) WIND VELOCITY WITH 30% GUST FACTOR, NORMAL TO SIGN.
 - MATERIALS: POST SHALL BE STRUCTURAL STEEL-BREAKAWAY CONFORMING WITH THE REQUIREMENTS OF SECTION 1093.01 OF THE IDOT SPECIFICATIONS. BOLTS, NUTS AND WASHERS SHALL BE HIGH-STRENGTH STEEL, GALVANIZED AND SHALL CONFORM TO SECTION 1006.08 OF THE IDOT SPECIFICATIONS.
 - IN AREAS WHERE POSTS PENETRATE PAVEMENT, THE PAVEMENT SHALL BE CORED. AFTER THE POST IS SET, THE HOLE SHALL BE GROUTED WITH AN IDOT APPROVED NON-SHRINK GROUT. COST INCIDENTAL TO SIGN.



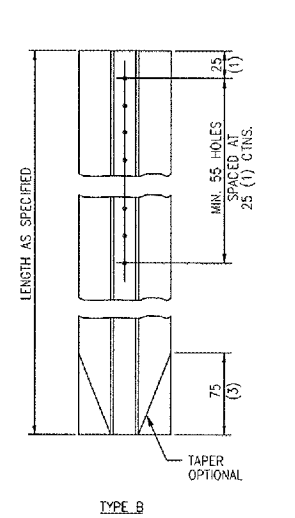
SECTION



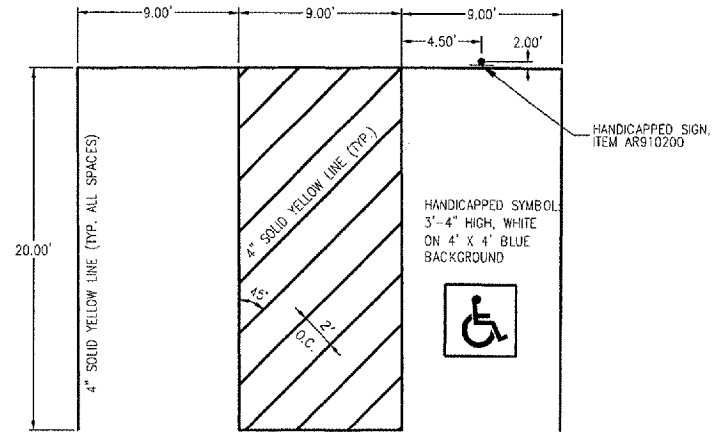
NOTE: MINIMUM OF 2 BOLTS PER POST REQUIRED
DETAIL OF MOUNTING SIGN TO POST

ROADWAY SIGN POST
(307 STANDARD 72011)

TYPE B	STEEL	ALUMINUM	a	b	c	S _{x-x}	kg/m
			81 (3 3/16)	32 (1 1/4)	38 (1 1/2)	5.588 (0.341)	4.46 (3.00)
			118 (4 5/8)	57 (2 1/4)	60 (2 3/8)	14.552 (0.888)	1.93 (1.30)



TYPE B



DETAIL A
ACCESSIBLE SPACE MARKINGS

01/28/2006 08:28 AM
H04:\h04\0031831\04\TXD_REV\Civil\Sheet\45 Pavement Marking.dgn