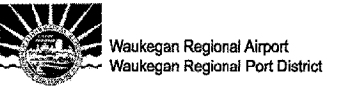




HANSON PROFESSIONAL SERVICES INC.

815 Commerce Drive, Suite 200  
Oak Brook, Illinois 60523  
Telephone: 630.990.3800  
Fax: 630.990.3801

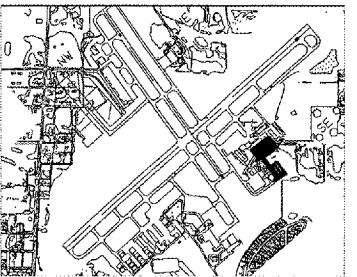


3580 North McAree Road  
Waukegan, Illinois 60087  
Phone: 847.244.0055  
Fax: 847.244.3813

WAUKEGAN REGIONAL AIRPORT

CONSTRUCT NEW T-HANGAR APRONS, TAXIWAYS AND AUTO ACCESS

IDA PROJECT NO. UGN-3499



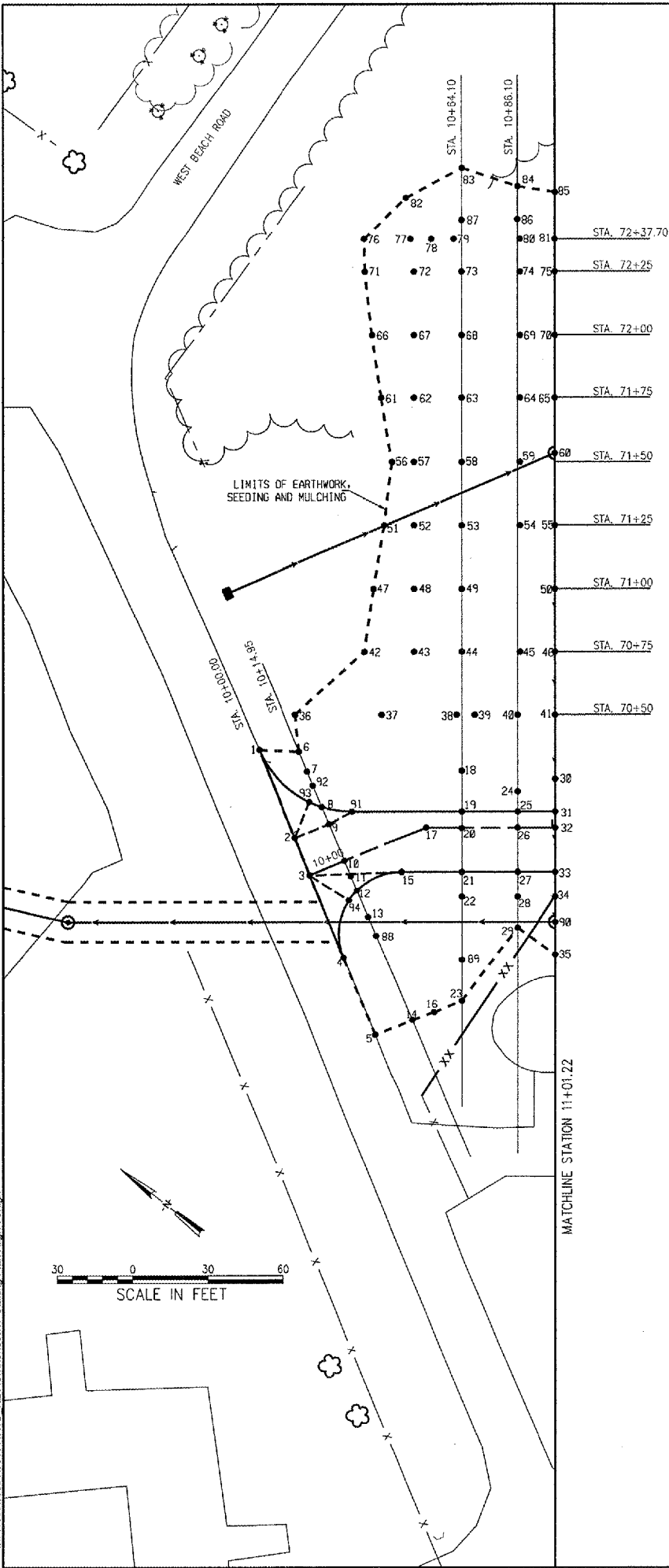
KEY MAP

- LEGEND**
- X - EXISTING FENCE
  - EXISTING STORM SEWER
  - EXISTING STORM SEWER MANHOLE
  - EXISTING STORM SEWER INLET
  - PROPOSED STORM SEWER
  - PROPOSED FENCE
  - ⊙ PROPOSED STORM SEWER STRUCTURE
  - ⊙ WATER VALVE
  - ⊞ TELEPHONE BOX
  - ELECTRICAL BOX
  - N NORTHING
  - E EASTING
  - 600.00 PROPOSED ELEVATION
  - 599.00 EXISTING ELEVATION
  - M.E. MEET EXISTING

**NOTE:**

FOR STAKING PLAN NOTES, SEE SHEET 15

PT	NORTHING	EASTING	PROP EL	EXIST EL	PT	NORTHING	EASTING	PROP EL	EXIST EL
1	2,096,227.31	1,111,410.94	718.72	718.72	51	2,096,239.41	1,111,512.01	717.62	717.62
2	2,096,195.21	1,111,391.19	718.63	718.63	52	2,096,229.87	1,111,519.00	715.65	717.44
3	2,096,181.73	1,111,382.65	718.51	718.51	53	2,096,214.66	1,111,538.13	715.27	717.16
4	2,096,151.13	1,111,363.94	718.21	718.21	54	2,096,196.11	1,111,543.72	714.81	717.00
5	2,096,122.60	1,111,346.35	718.02	718.02	55	2,096,184.81	1,111,551.99	714.34	717.03
6	2,096,214.14	1,111,419.72	717.79	717.79	56	2,096,251.63	1,111,534.05	717.09	717.09
7	2,096,206.88	1,111,415.36	717.18	718.06	57	2,096,244.64	1,111,539.17	715.65	717.07
8	2,096,193.91	1,111,407.59	717.67	718.14	58	2,096,229.43	1,111,558.31	715.27	716.72
9	2,096,187.47	1,111,403.72	717.77	717.51	59	2,096,210.89	1,111,563.88	714.81	716.52
10	2,096,173.87	1,111,395.57	717.60	716.75	60	2,096,201.65	1,111,574.99	714.13	716.39
11	2,096,168.29	1,111,392.22	717.54	716.66	61	2,096,269.86	1,111,551.69	717.81	717.81
12	2,096,162.93	1,111,389.01	717.34	716.55	62	2,096,259.41	1,111,559.34	715.65	718.48
13	2,096,153.03	1,111,383.07	716.97	716.48	63	2,096,244.20	1,111,578.48	715.27	718.97
14	2,096,114.20	1,111,359.78	715.09	715.09	64	2,096,225.66	1,111,584.05	714.81	717.85
15	2,096,152.97	1,111,405.51	716.70	717.54	65	2,096,214.35	1,111,592.33	714.38	717.14
16	2,096,109.15	1,111,367.40	716.03	716.03	66	2,096,207.56	1,111,569.72	718.41	718.41
17	2,096,155.45	1,111,425.39	716.54	717.81	67	2,096,274.18	1,111,579.51	715.65	719.01
18	2,096,157.39	1,111,451.91	715.27	717.75	68	2,096,258.97	1,111,598.85	715.27	718.77
19	2,096,147.91	1,111,438.96	716.20	717.69	69	2,096,240.43	1,111,604.22	714.81	717.58
20	2,096,144.00	1,111,433.61	716.10	717.61	70	2,096,229.12	1,111,612.50	714.55	716.87
21	2,096,133.73	1,111,419.60	715.84	717.39	71	2,096,304.61	1,111,588.22	718.89	718.89
22	2,096,127.82	1,111,411.53	715.22	717.30	72	2,096,288.95	1,111,599.68	715.65	718.77
23	2,096,103.03	1,111,377.65	716.20	716.20	73	2,096,273.74	1,111,610.82	715.27	718.88
24	2,096,134.85	1,111,458.36	714.83	717.46	74	2,096,255.20	1,111,624.40	714.81	717.32
25	2,096,130.16	1,111,451.96	715.36	717.38	75	2,096,243.89	1,111,632.68	714.67	716.61
26	2,096,126.32	1,111,446.71	715.27	717.33	76	2,096,312.38	1,111,598.27	719.29	719.29
27	2,096,115.98	1,111,432.59	714.98	717.18	77	2,096,297.52	1,111,609.15	716.22	718.92
28	2,096,110.07	1,111,424.52	714.36	717.02	78	2,096,290.91	1,111,613.99	715.88	718.75
29	2,096,102.78	1,111,414.57	716.79	716.79	79	2,096,283.74	1,111,619.24	715.33	718.75
30	2,096,125.74	1,111,471.30	715.13	717.24	80	2,096,262.70	1,111,634.64	714.81	717.19
31	2,096,118.06	1,111,468.82	715.35	717.25	81	2,096,251.39	1,111,642.92	714.76	716.53
32	2,096,114.22	1,111,455.57	715.27	717.21	82	2,096,308.66	1,111,621.27	719.16	719.16
33	2,096,103.00	1,111,441.45	714.98	717.07	83	2,096,297.81	1,111,643.91	718.66	718.66
34	2,096,097.97	1,111,433.38	714.36	716.88	84	2,096,275.77	1,111,651.07	717.02	717.02
35	2,096,094.20	1,111,414.57	716.35	716.35	85	2,096,262.31	1,111,658.04	716.44	716.44
36	2,096,223.83	1,111,430.47	718.50	718.50	86	2,096,268.12	1,111,640.39	714.83	717.15
37	2,096,195.96	1,111,450.88	717.30	718.75	87	2,096,285.68	1,111,627.13	715.27	718.69
38	2,096,172.00	1,111,468.42	716.36	718.32	88	2,096,146.07	1,111,378.90	715.97	715.97
39	2,096,166.24	1,111,472.63	715.17	718.10	89	2,096,112.79	1,111,398.99	715.34	716.04
40	2,096,152.61	1,111,482.61	714.83	717.63	90	2,096,092.07	1,111,425.31	713.69	716.75
41	2,096,140.51	1,111,491.48	714.90	717.40	91	2,096,183.00	1,111,413.27	717.30	718.09
42	2,096,216.22	1,111,457.03	718.93	718.93	92	2,096,201.74	1,111,412.28	716.93	718.10
43	2,096,200.34	1,111,478.66	715.65	719.03	93	2,096,199.09	1,111,406.21	717.83	718.20
44	2,096,185.13	1,111,489.79	715.27	718.45	94	2,096,163.16	1,111,383.91	717.49	716.34
45	2,096,166.58	1,111,523.37	714.81	717.76					
46	2,096,155.28	1,111,511.65	714.72	717.38					
47	2,096,228.03	1,111,489.36	718.32	718.32					
48	2,096,215.10	1,111,498.83	715.65	718.63					
49	2,096,199.90	1,111,509.96	715.27	718.14					
50	2,096,170.05	1,111,531.82	714.53	717.31					



01/23/2006, 01:58 PM I:\04\05\095183104\TXD\_REV\Civil\Sheet17 Staking Plan-Align TO.dgn

No.	Drawing Issue Description	Date	By

Date: **JANUARY 27, 2006**

**STAKING PLAN PROPOSED DRIVEWAY**

831-04TXD	
Project Number	
AAP	11/15/05
Date	
Layout By	Date
AAP	11/15/05
Date	
Designed By	Date
KLJRMH	01/23/06
Date	
Reviewed By	Date
KLK	AAP
Date	
Drawn By	Sheet No.