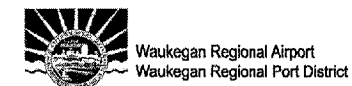




HANSON PROFESSIONAL SERVICES INC.

815 Commerce Drive, Suite 200
Oak Brook, Illinois 60523
Telephone: 630.990.3800
Fax: 630.990.3801

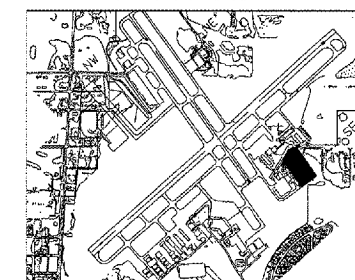


3580 North McAre Road
Waukegan, Illinois 60087
Phone: 847.244.0055
Fax: 847.244.3813

WAUKEGAN REGIONAL AIRPORT

CONSTRUCT NEW T-HANGAR
APRONS, TAXIWAYS AND
AUTO ACCESS

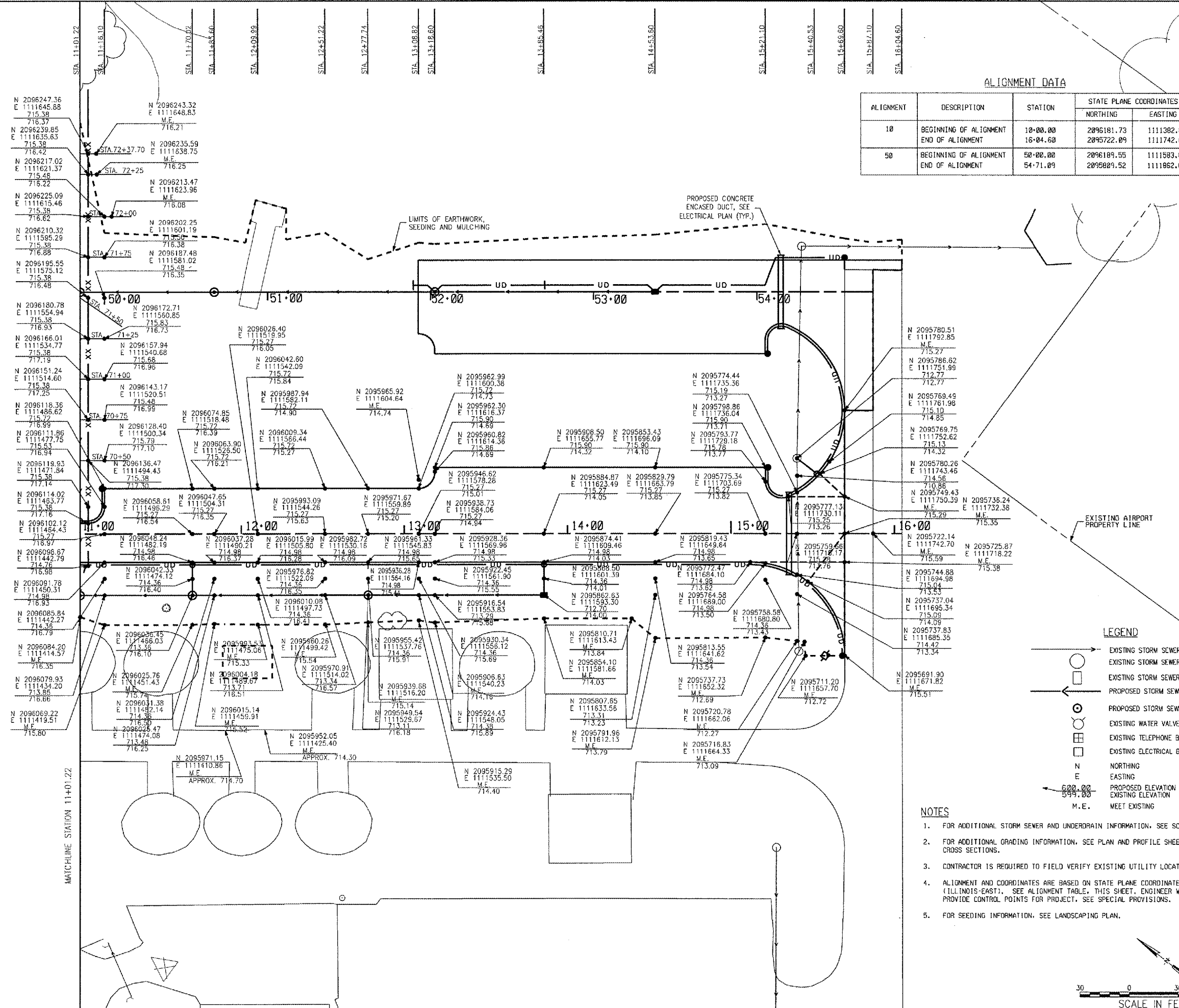
IDA PROJECT NO. UGN-3499



KEY MAP

ALIGNMENT DATA

| ALIGNMENT | DESCRIPTION | STATION | STATE PLANE COORDINATES | |
|-----------|------------------------|----------|-------------------------|------------|
| | | | NORTHING | EASTING |
| 10 | BEGINNING OF ALIGNMENT | 10+00.00 | 2096181.73 | 1111382.85 |
| | END OF ALIGNMENT | 16+04.60 | 2095722.09 | 1111742.68 |
| 50 | BEGINNING OF ALIGNMENT | 50+00.00 | 2096189.55 | 1111583.85 |
| | END OF ALIGNMENT | 54+71.09 | 2095809.52 | 1111852.09 |

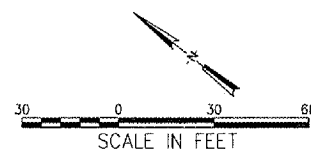


LEGEND

- EXISTING STORM SEWER
- EXISTING STORM SEWER MANHOLE
- EXISTING STORM SEWER INLET
- PROPOSED STORM SEWER
- PROPOSED STORM SEWER STRUCTURE
- EXISTING WATER VALVE
- EXISTING TELEPHONE BOX
- EXISTING ELECTRICAL BOX
- N
NORTHING
- E
EASTING
- 600.00
PROPOSED ELEVATION
- 599.00
EXISTING ELEVATION
- M.E.
MEET EXISTING

NOTES

1. FOR ADDITIONAL STORM SEWER AND UNDERDRAIN INFORMATION, SEE SCHEDULES.
2. FOR ADDITIONAL GRADING INFORMATION, SEE PLAN AND PROFILE SHEETS AND CROSS SECTIONS.
3. CONTRACTOR IS REQUIRED TO FIELD VERIFY EXISTING UTILITY LOCATIONS.
4. ALIGNMENT AND COORDINATES ARE BASED ON STATE PLANE COORDINATES (ILLINOIS-EAST). SEE ALIGNMENT TABLE, THIS SHEET. ENGINEER WILL PROVIDE CONTROL POINTS FOR PROJECT. SEE SPECIAL PROVISIONS.
5. FOR SEEDING INFORMATION, SEE LANDSCAPING PLAN.



| No. | Drawing Issue Description | Date | By |
|-----|---------------------------|------|----|
| | | | |
| | | | |
| | | | |
| | | | |
| | | | |

Date

JANUARY 27, 2006

Sheet Title

STAKING PLAN
TAXILANE ALIGNMENT 10

| | |
|----------------|-----------|
| 831-04TXD | |
| Project Number | |
| AAP | 11/15/05 |
| Layout By | Date |
| AAP | 11/15/05 |
| Designed By | Date |
| KLK/RMH | 01/23/06 |
| Reviewed By | Date |
| KLK | AAP |
| Drawn By | Sheet No. |